

# Siglec1-Cre

系統名	C57BL/6Smoc- <i>Siglec1</i> <sup>em1(iCre-polyA)Smoc</sup>
SMOC番号	NM-KI-215032
維持形態	Repository Live

## 遺伝子の概要

Gene Symbol Avil	Synonyms	DOC6; Advil
	NCBI ID	<a href="#">11567</a>
	MGI ID	<a href="#">1333798</a>
	Ensembl ID	<a href="#">ENSMUSG00000025432</a>
	Human Ortholog	AVIL

## 説明

iCre-polyA expression cassette was knocked into the *Siglec1* gene.

\*Literature published using this strain should indicate: *Siglec1*-Cre mice (Cat. NO. NM-KI-215032) were purchased from Shanghai Model Organisms Center, Inc..

## 表現型データ

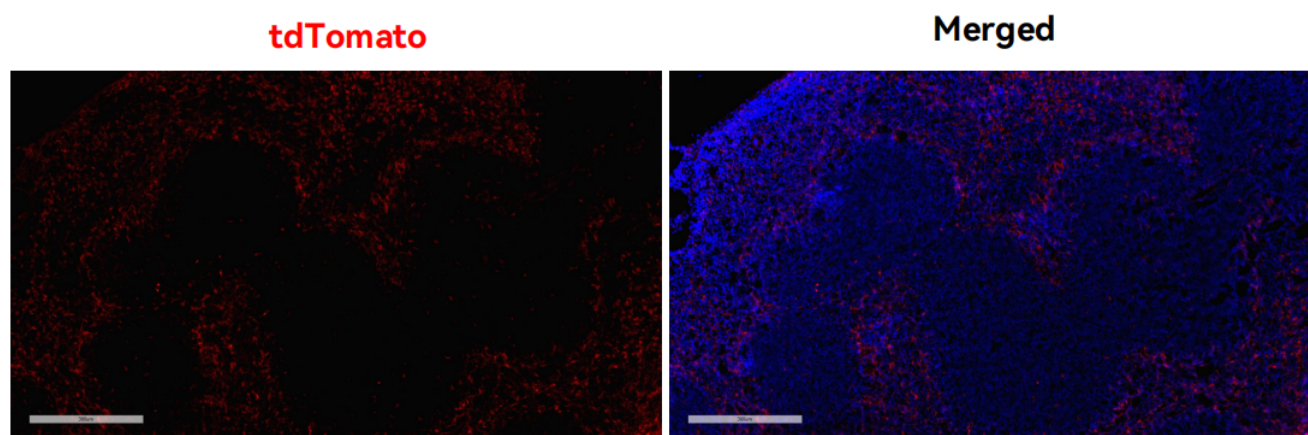


Fig1. Cre-mediated recombination in spleen of *Siglec1*<sup>Cre/+</sup>; *Rosa26*<sup>tdTomato/+</sup> mouse.

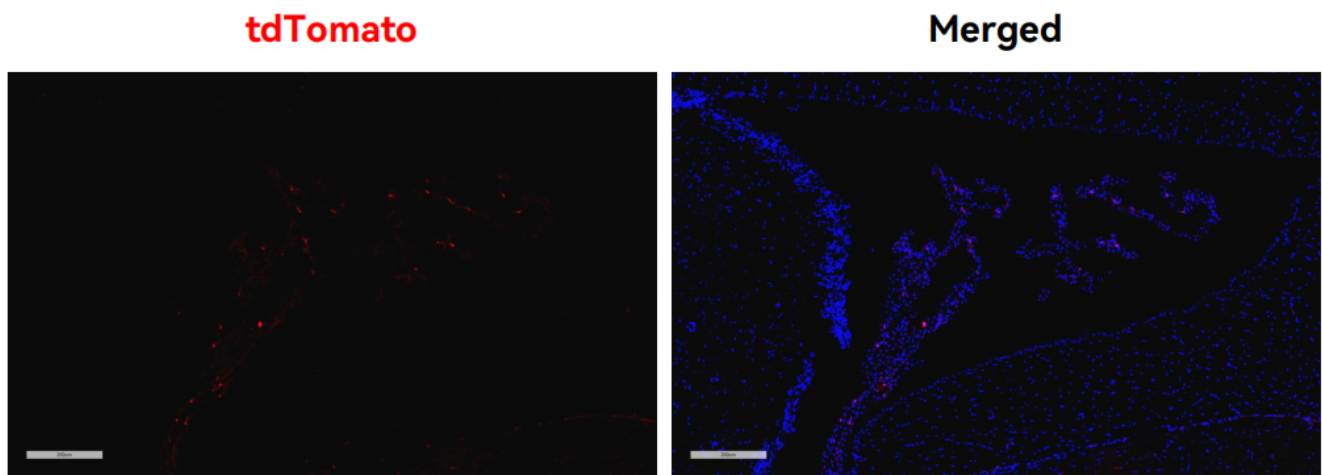


Fig2. Cre-mediated recombination in choroid plexus of Siglec1<sup>Cre/+</sup>; Rosa26tdTomato<sup>+/+</sup> mouse.

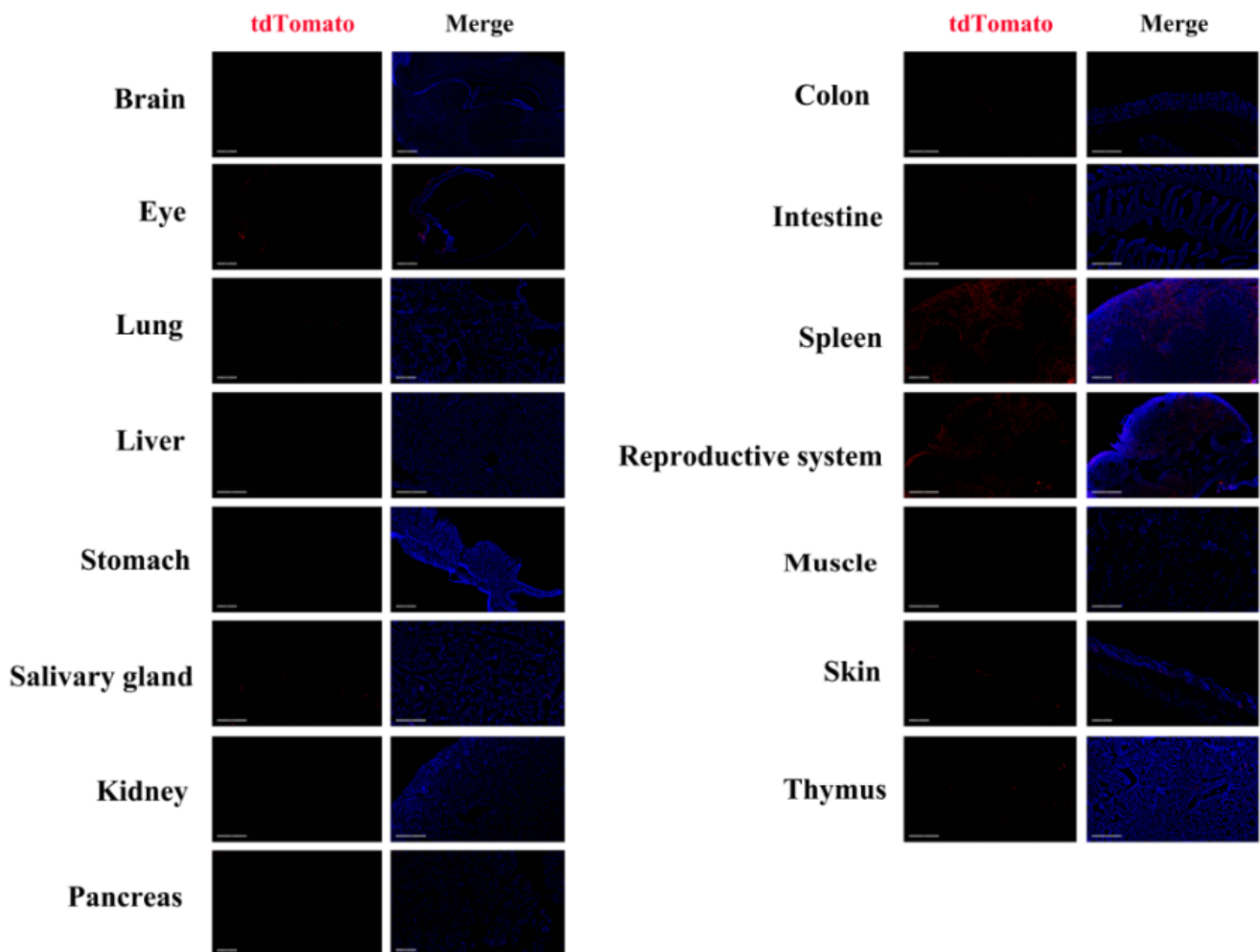


Fig3. Detection of tdTomato (red) in various tissues of Siglec1<sup>Cre/+</sup>; Rosa26tdTomato<sup>+/+</sup> mice. (For more detailed information please contact our technical advisor.)