

# Cyp19a1-IRES-Cre

系統名	C57BL/6Smoc- <i>Cyp19a1</i> <sup>em(IRES-Cre)Smoc</sup>
SMOC番号	NM-KI-215089
維持形態	Repository Live

## 遺伝子の概要

Gene Symbol Cyp19a1	Synonyms	Ar; ArKO; Int5; Cyp19; Int-5; p450arom
	NCBI ID	<a href="#">13075</a>
	MGI ID	<a href="#">88587</a>
	Ensembl ID	<a href="#">ENSMUSG00000032274</a>
	Human Ortholog	CYP19A1

## 説明

IRES-Cre expression cassette was knocked into the *Cyp19a1* gene .

\*Literature published using this strain should indicate: *Cyp19a1*-IRES-Cre mice (Cat. NO. NM-KI-215089) were purchased from Shanghai Model Organisms Center, Inc..

## 表現型データ

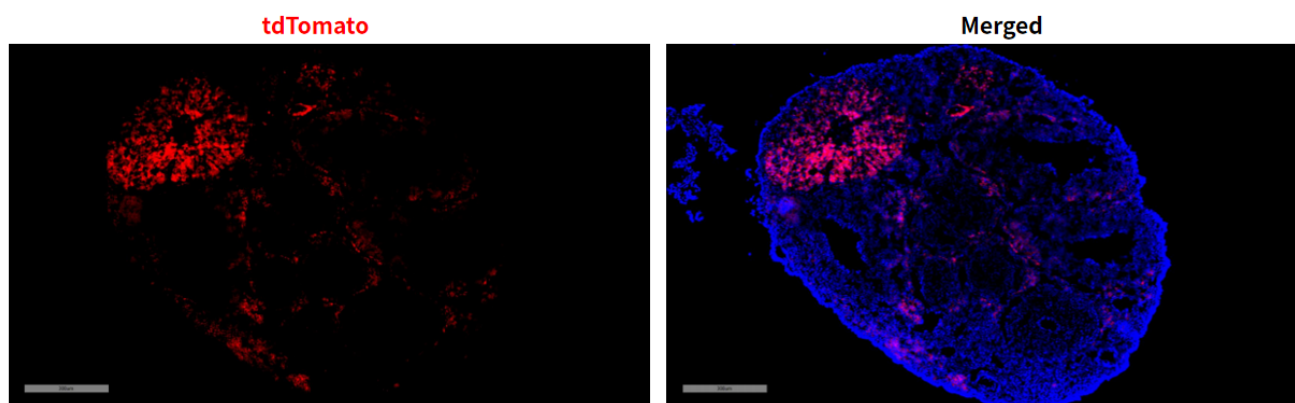
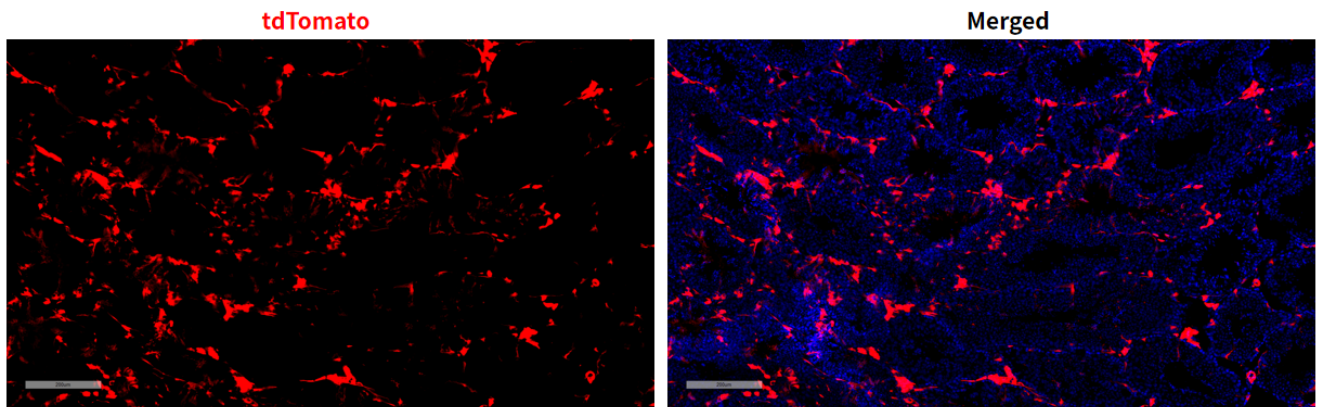
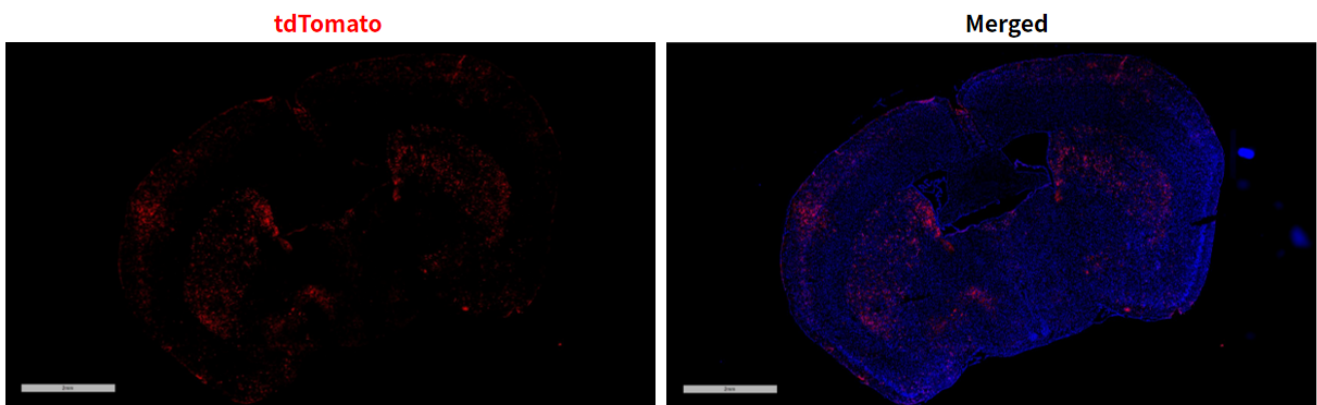


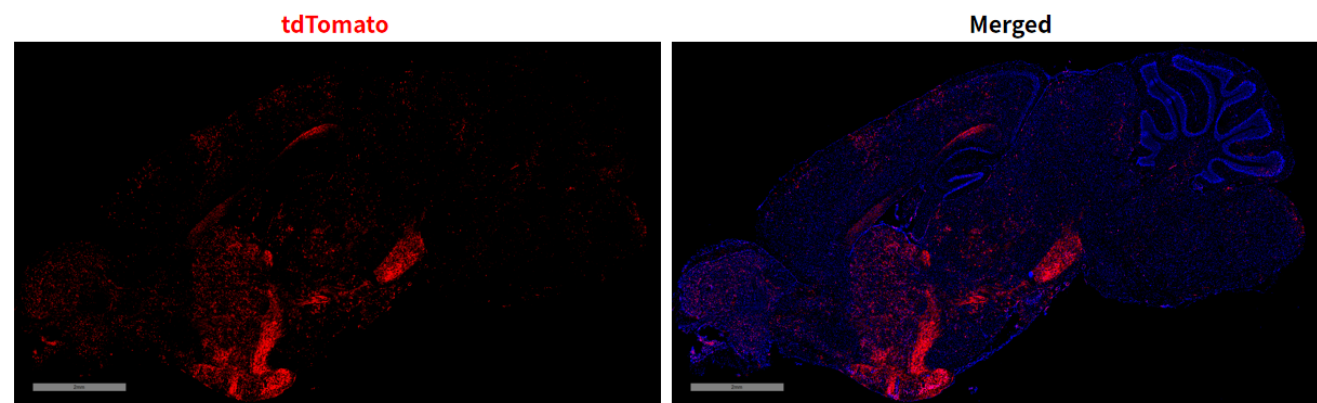
Fig 1. Cre-mediated recombination in ovary of *Cyp19a1*<sup>Cre/+</sup>; *Rosa26*<sup>tdTomato/+</sup> mice.



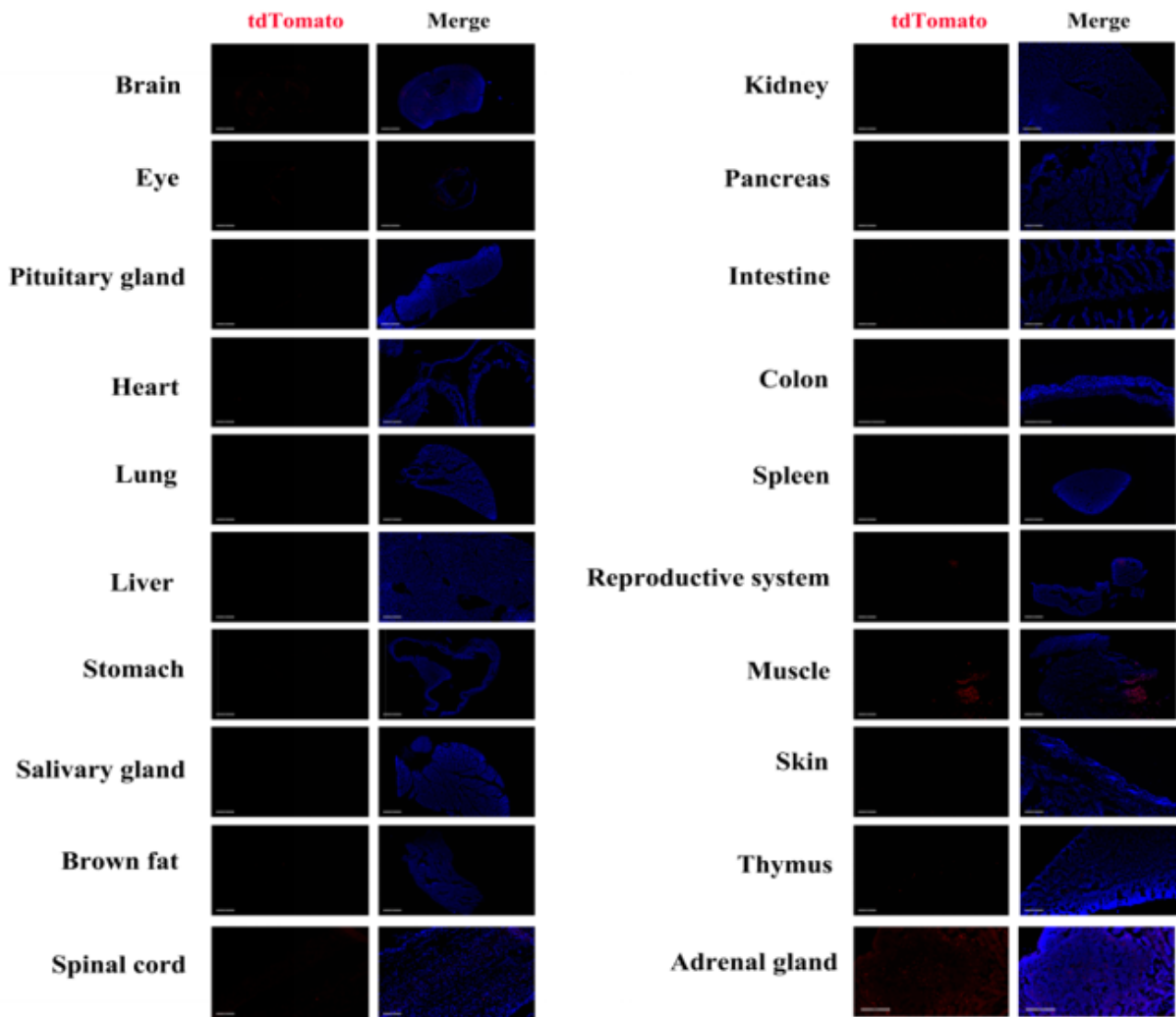
**Fig 2. Cre-mediated recombination in testis of  $Cyp19a1^{Cre/+}$ ;  $Rosa26^{tdTomato/+}$  mice.**



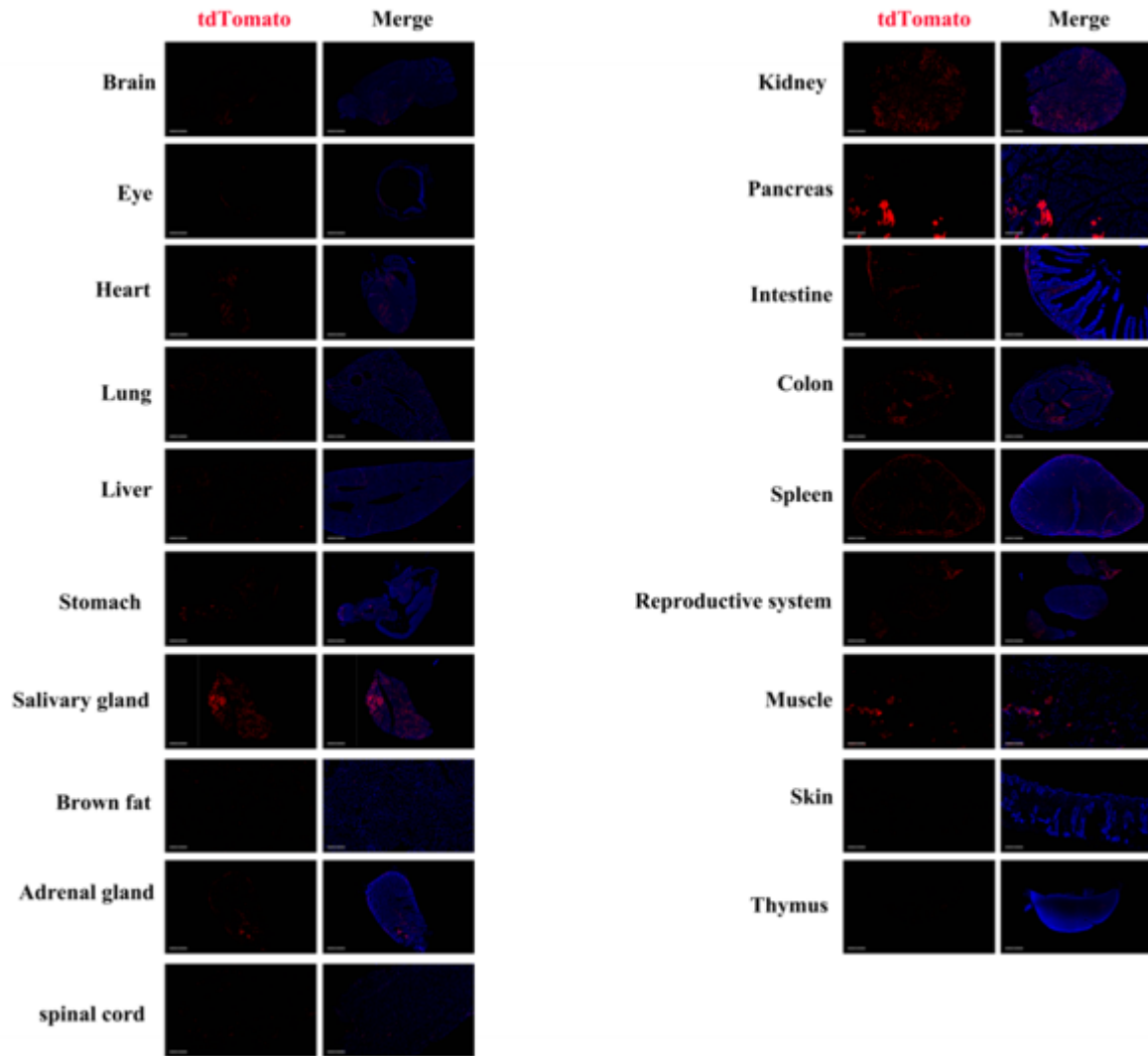
**Fig 3. Cre-mediated recombination in brain of  $Cyp19a1^{Cre/+}$ ;  $Rosa26^{tdTomato/+}$  female mice.**



**Fig 4. Cre-mediated recombination in brain of  $Cyp19a1^{Cre/+}$ ;  $Rosa26^{tdTomato/+}$  male mice.**



**Fig 5. Detection of tdTomato (red) in various tissues of  $Cyp19a1^{Cre/+}; Rosa26^{tdTomato/+}$  female mice.**



**Fig 6. Detection of tdTomato (red) in various tissues of  $Cyp19a1^{Cre/+}; Rosa26^{tdTomato/+}$  male mice.** Expression tissues include: brain, cornea, heart, lungs, liver, stomach, salivary glands, adrenal glands, kidneys, pancreas, small intestine, colon, spleen, testis, thymus. A few cells expressed in brown fat, spinal cord, muscle, skin. (12-week old, male) (For more detailed information please contact our technical advisor.)