

# Lum-2A-CreERT2

系統名	C57BL/6Smoc- <i>Lum</i> <sup>em1(2A-CreERT2)Smoc</sup>
SMOC番号	NM-KI-210447
維持形態	Repository Live

## 遺伝子の概要

Gene Symbol Lum	<b>Synonyms</b>	Ldc; SLRR2D
	<b>NCBI ID</b>	<a href="#">17022</a>
	<b>MGI ID</b>	<a href="#">109347</a>
	<b>Ensembl ID</b>	<a href="#">ENSMUSG00000036446</a>
	<b>Human Ortholog</b>	LUM

## 説明

2A-CreERT2 expression cassette was knocked into the Lum gene stop codon site.

\*Literature published using this strain should indicate: Lum-2A-CreERT2 mice (Cat. NO. NM-KI-210447) were purchased from Shanghai Model Organisms Center, Inc..

## 表現型データ

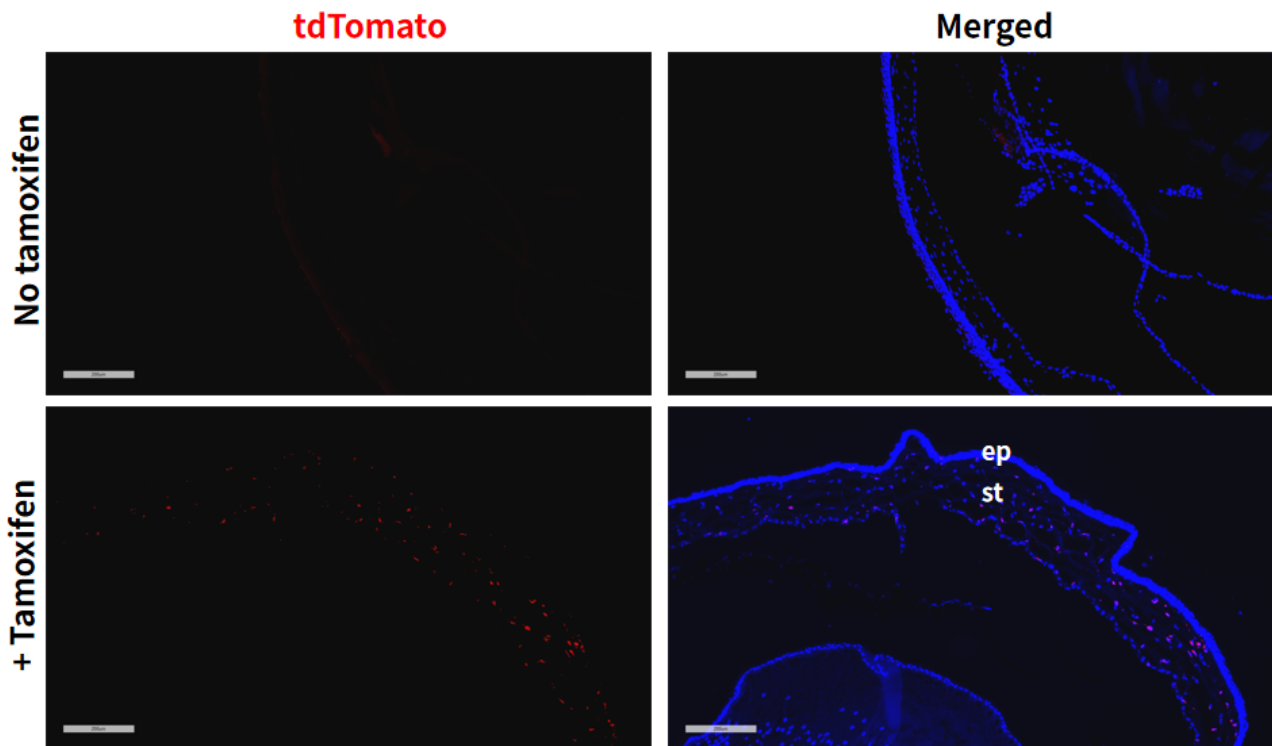


Fig1. Cre mediated recombination in Cornea of LumCreERT2/+;Rosa26tdTomato/+ mouse. (ep, epithelium; st, stroma.)

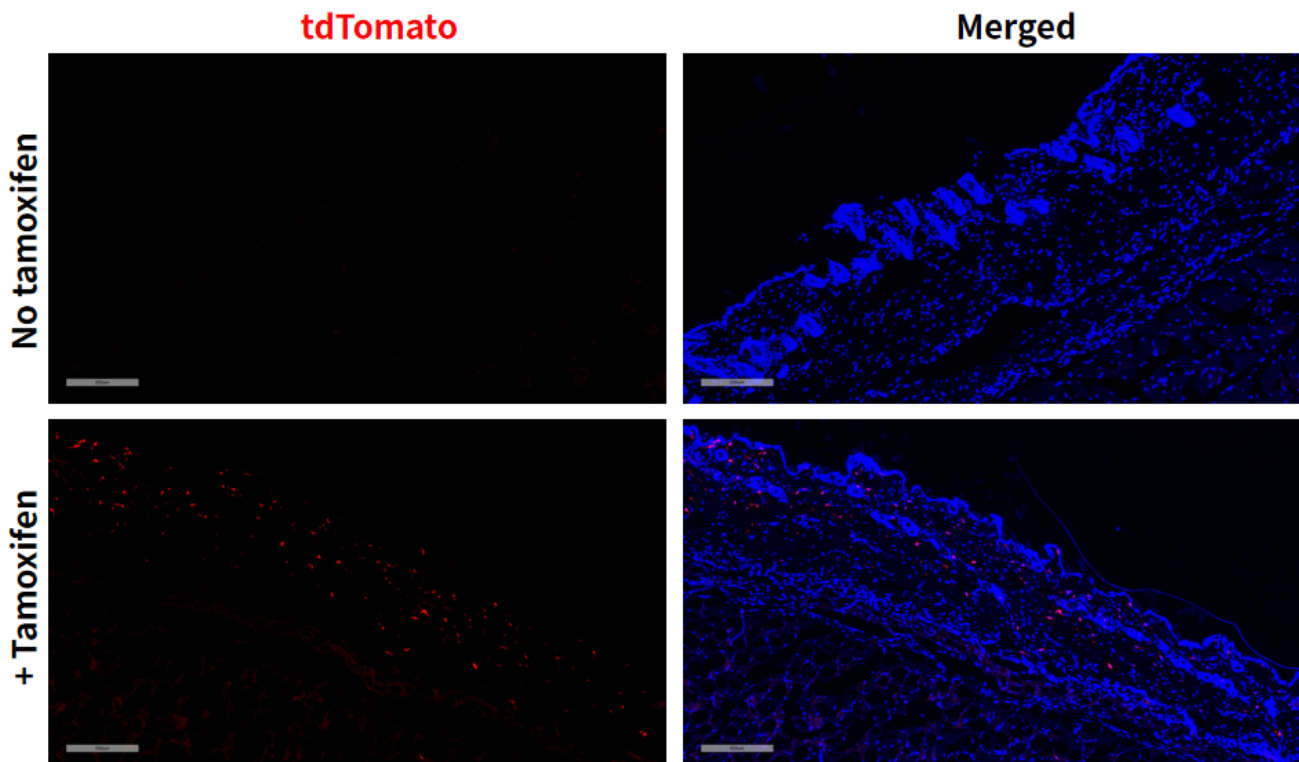


Fig2. Cre mediated recombination in skin of LumCreERT2/+;Rosa26tdTomato/+ mouse.

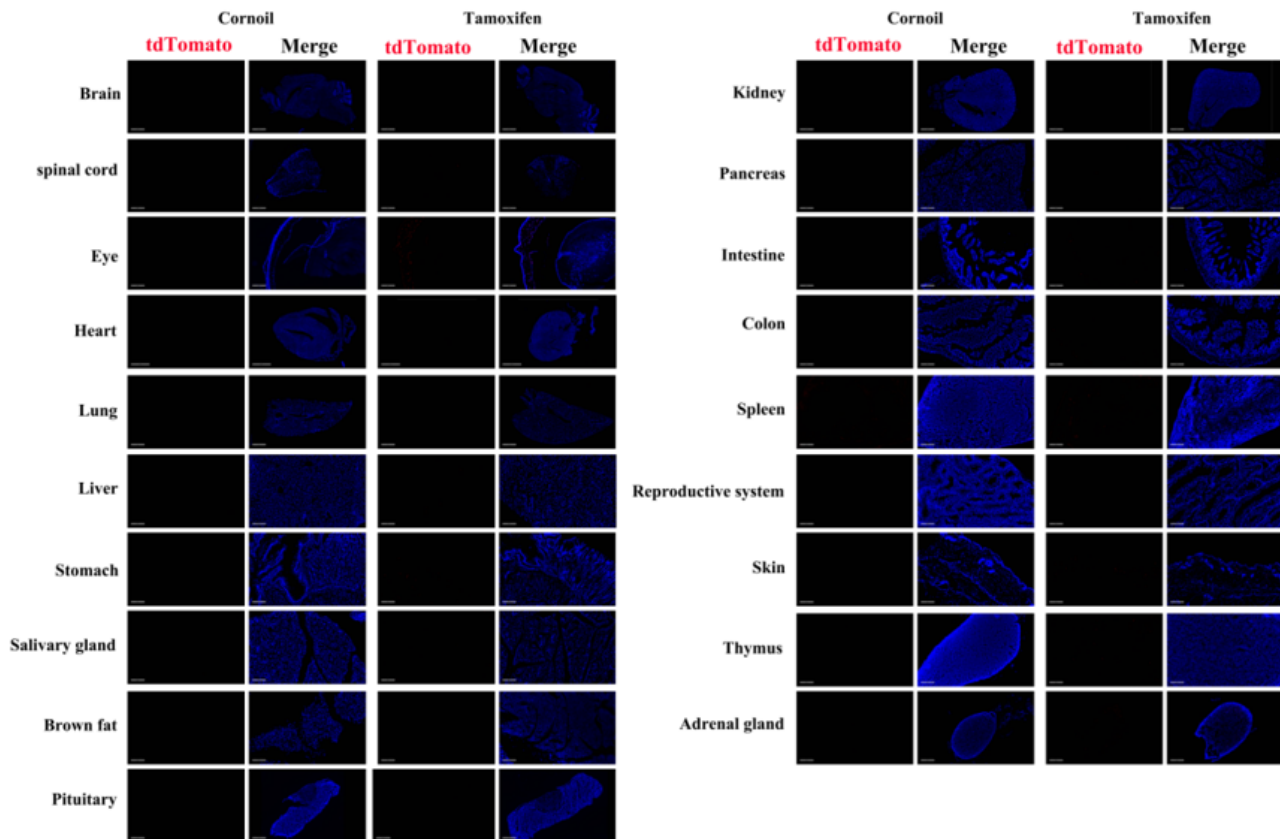


Fig3. Detection of tdTomato(red) in various tissues of LumCreERT2/+; Rosa26tdTomato/+ mouse. Expression tissues include: cornea, skin, stomach, small intestine, colon, spleen and adrenal gland. A few cells expressed in spinal cord, salivary gland, thymus. Tissues that unexpressed include brain, heart, lung, liver, brown fat, pituitary, kidney, pancreas and testis. (9-week old, male) (For more detailed information please contact our technical advisor.)