

hCSF1/hCSF1R(BALB/c)

系統名	BALB/cAnSmoc- <i>Csf1</i> ^{tm2(CSF1)} <i>Csf1r</i> ^{em3(hCSF1R)/Smoc}
SMOC番号	NM-HU-220016
維持形態	Repository Live

遺伝子の概要

Gene Symbol CSF1	Synonyms	colony-stimulating factor-1; CSF-1; Csfm; M-CSF
	NCBI ID	12977
	MGI ID	1339753
	Ensembl ID	ENSMUSG00000014599
	Human Ortholog	CSF1
Gene Symbol CSF1R	Synonyms	Fms; Fim2; CD115; Csfmr; Fim-2; CSF-1R; M-CSFR; M-CSF-R; AI323359
	NCBI ID	12978
	MGI ID	1339758
	Ensembl ID	ENSMUSG00000024621
	Human Ortholog	CSF1R

説明

The endogenous mouse *Csf1* and *Csf1r* genes was replaced respectively by human CSF1 and CSF1R genes.

*Literature published using this strain should indicate: hCSF1/hCSF1R(BALB/c) mice (Cat. NO. NM-HU-220016) were purchased from Shanghai Model Organisms Center, Inc..

表現型データ

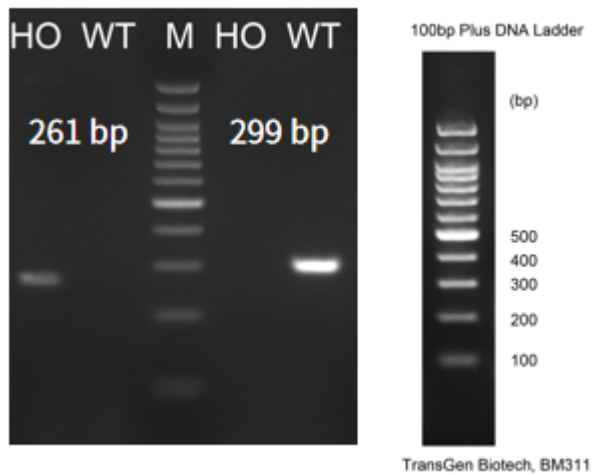


Fig.1 Detection of CSF1 expression in spleen and lung by RT-PCR.

Wild type: only one band at 299 bp with primers F1/R1(mCsf1);

Homozygous: only one band at 261 bp with primers F2/R2(hCSF1);

Abbr. M, DNA marker; HO, homozygous; WT, wild type.

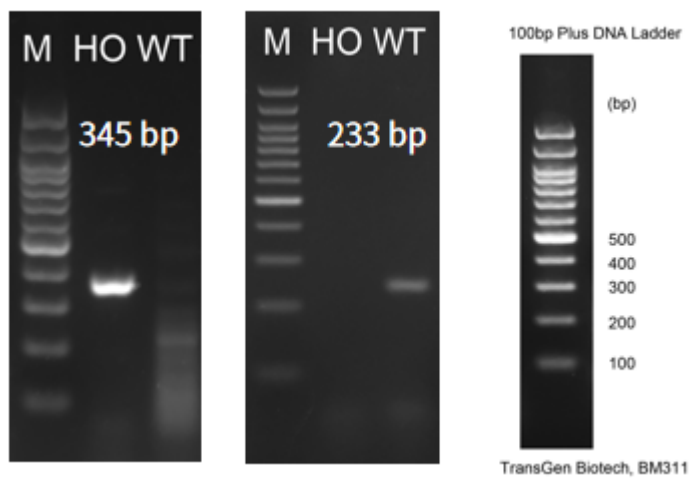


Fig.2 Detection of CSF1R expression in spleen and lung by RT-PCR.

Wild type: only one band at 233 bp with primers F1/R1(mCsf1r);

Homozygous: only one band at 345 bp with primers F2/R2(hCSF1R);

Abbr. M, DNA marker; HO, homozygous; WT, wild type.

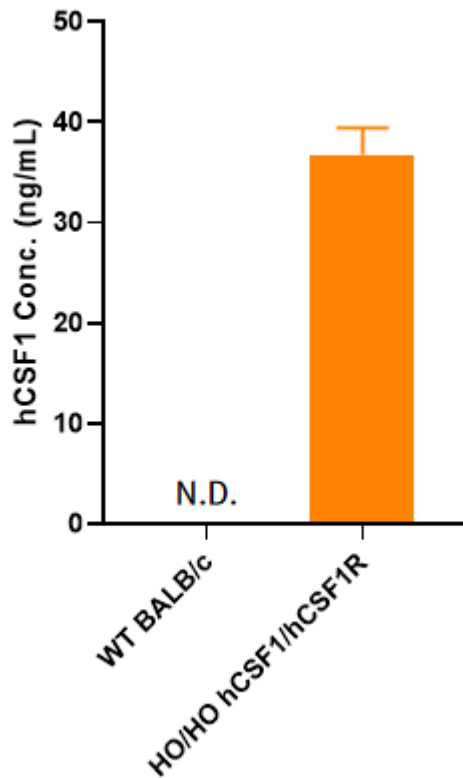


Fig.3 Detection of hCSF1 expression in serum by ELISA (n=3).

Abbr. HO, homozygous; WT, wild type.

Note. hCSF1/hCSF1R and BALB/c mice were i.p. injected with LPS for 6h.

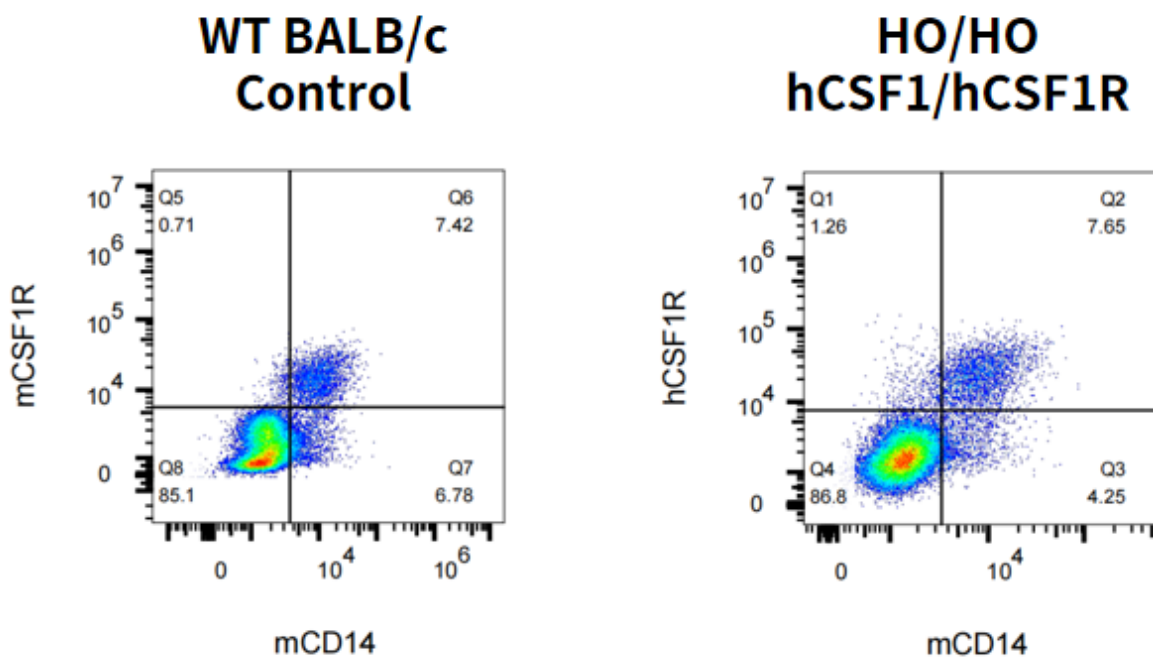


Fig.4 Expression characterization of hCSF1R on Monocytes/ macrophages in Bone marrow in hCSF1/hCSF1R dKI mice.

