

# hIL2/hIL2RA(BALB/c)

系統名	BALB/cAnSmoc- <i>Il2</i> <sup>tm3(hIL2)</sup> / <i>Il2ra</i> <sup>tm1(hIL2RA)/Smoc</sup>
SMOC番号	NM-HU-220018
維持形態	Repository Live

## 遺伝子の概要

Gene Symbol IL2	Synonyms	Il-2
	NCBI ID	<a href="#">16183</a>
	MGI ID	<a href="#">96548</a>
	Ensembl ID	<a href="#">ENSMUSG00000027720</a>
	Human Ortholog	IL2
Gene Symbol IL2RA	Synonyms	CD25; Il2r; IL-2R alpha chain; Ly-43
	NCBI ID	<a href="#">16184</a>
	MGI ID	<a href="#">96549</a>
	Ensembl ID	<a href="#">ENSMUSG00000026770</a>
	Human Ortholog	IL2RA
Gene Symbol Il2ra	Synonyms	CD25; Il2r; IL-2R alpha chain; Ly-43
	NCBI ID	<a href="#">16184</a>
	MGI ID	<a href="#">96549</a>
	Ensembl ID	<a href="#">ENSMUSG00000026770</a>
	Human Ortholog	IL2RA

## 説明

The endogenous mouse *Il2* and *Il2ra* gene was replaced respectively by human *IL2* and *IL2RA* gene.

\*Literature published using this strain should indicate: hIL2/hIL2RA(BALB/c) mice (Cat. NO. NM-HU-220018) were purchased from Shanghai Model Organisms Center, Inc..

表現型データ

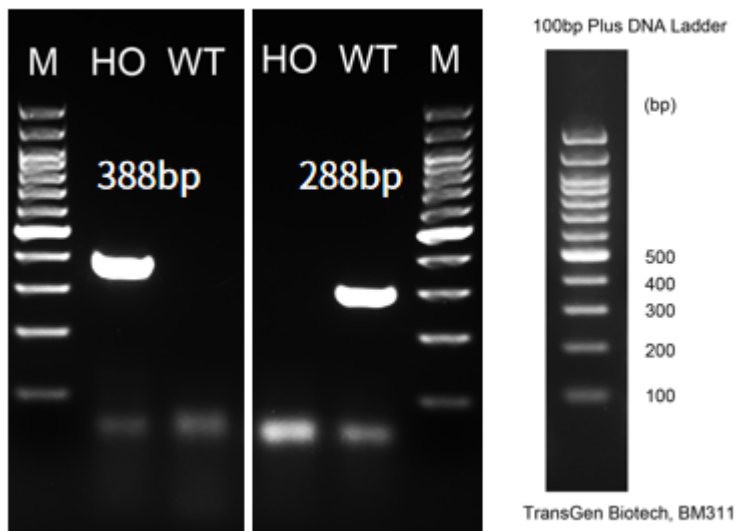


Fig1. Detection of IL2 expression in splenocyte by RT-PCR.

Wild type: only one band at 288 bp with primers F1/R1(mIL2);

Homozygous: only one band at 388 bp with primers F2/R2(hIL2);

Abbr. M, DNA marker; HO, homozygous; WT, wild type.

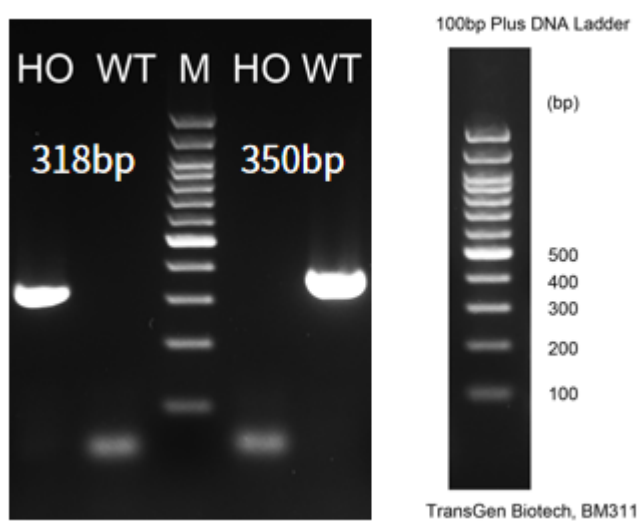


Fig2. Detection of IL2RA expression in splenocyte by RT-PCR.

Wild type: only one band at 350 bp with primers F1/R1(mIL2ra);

Homozygous: only one band at 318 bp with primers F2/R2(hIL2RA);

Abbr. M, DNA marker; HO, homozygous; WT, wild type.

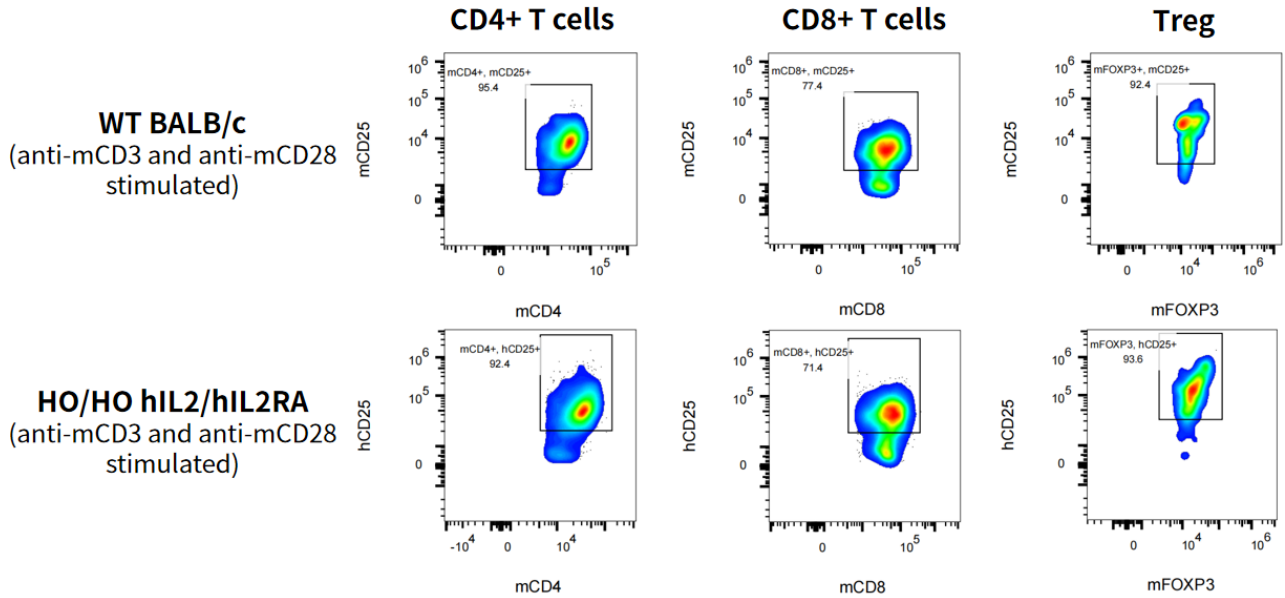


Fig3. Detection of hIL2RA expression on splenocyte-derived T cells in hIL2/hIL2RA dKI mice.