

Ins2-CreERT2

系統名	C57BL/6Smoc- <i>Ins2</i> ^{em(CreERT2)1Smoc}
SMOC番号	NM-KI-225022
維持形態	Sperm cryopreservation

遺伝子の概要

Gene Symbol Ins2	Synonyms	Mody; Ins-2; InsII; Mody4; AA986540
	NCBI ID	16334
	MGI ID	96573
	Ensembl ID	ENSMUSG00000000215
	Human Ortholog	INS2

説明

CreERT2 expression cassette was knocked into the *Ins2* gene .

*Literature published using this strain should indicate: *Ins2*-CreERT2 mice (Cat. NO. NM-KI-225022) were purchased from Shanghai Model Organisms Center, Inc..

表現型データ

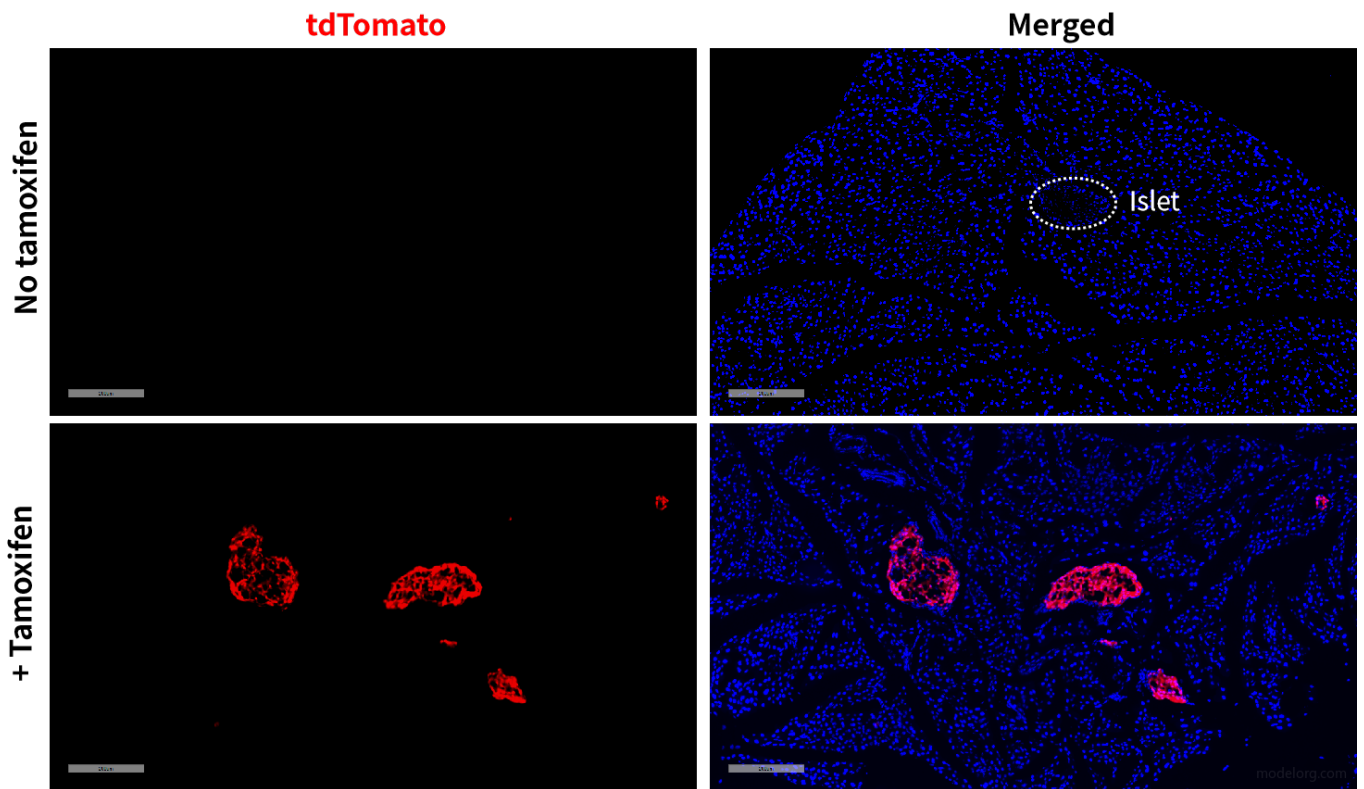


Fig 1. CreERT2-mediated recombination in pancreas of $Ins2^{CreERT2/+}; Rosa26^{tdTomato/+}$ mice.

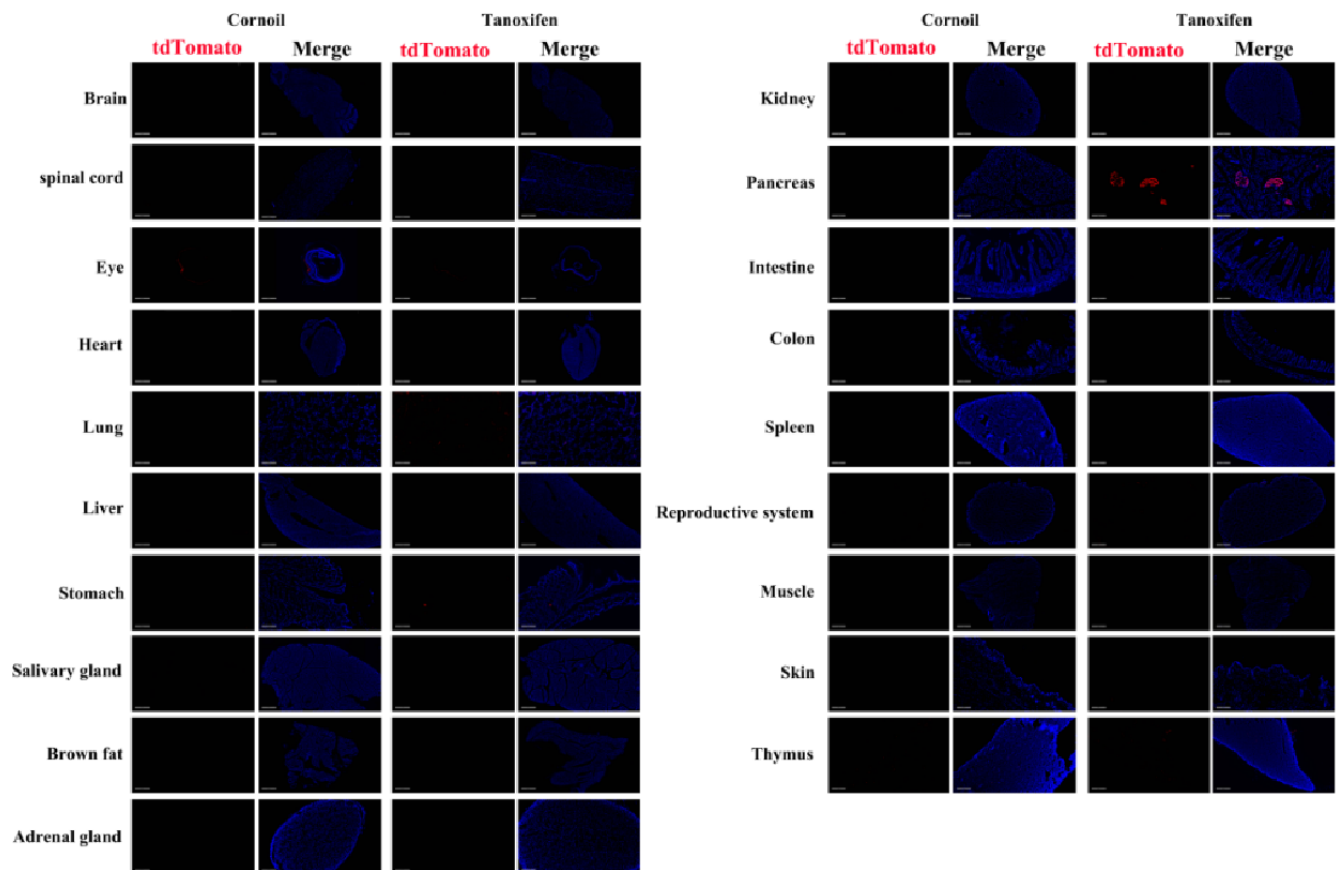


Fig 2. Detection of tdTomato(red) in various tissues of $Ins2^{CreERT2/+}; Rosa26^{tdTomato/+}$ mice.

Expression tissues include: pancreas, brain(choroid plexus). A few cells expressed in lung, stomach, small intestine, testis, thymus. Tissues that unexpressed include spinal cord, retina, liver, heart, salivary glands, brown fat, adrenal gland, kidneys, colon, spleen, muscle, skin. (7.3-week old, male) (For more detailed information please contact our technical advisor.)
