

Mrc1-2A-CreERT2

系統名	C57BL/6Smoc- <i>Mrc1</i> ^{em(2A-CreERT2)Smoc}
SMOC番号	NM-KI-220031
維持形態	Repository Live

遺伝子の概要

Gene Symbol Mrc1	Synonyms	MR; CD206; AW259686
	NCBI ID	17533
	MGI ID	97142
	Ensembl ID	ENSMUSG00000026712
	Human Ortholog	MRC1

説明

2A-CreERT2 expression cassette was knocked into the Mrc1 gene stop codon site.

*Literature published using this strain should indicate: Mrc1-2A-CreERT2 mice (Cat. NO. NM-KI-220031) were purchased from Shanghai Model Organisms Center, Inc..

表現型データ

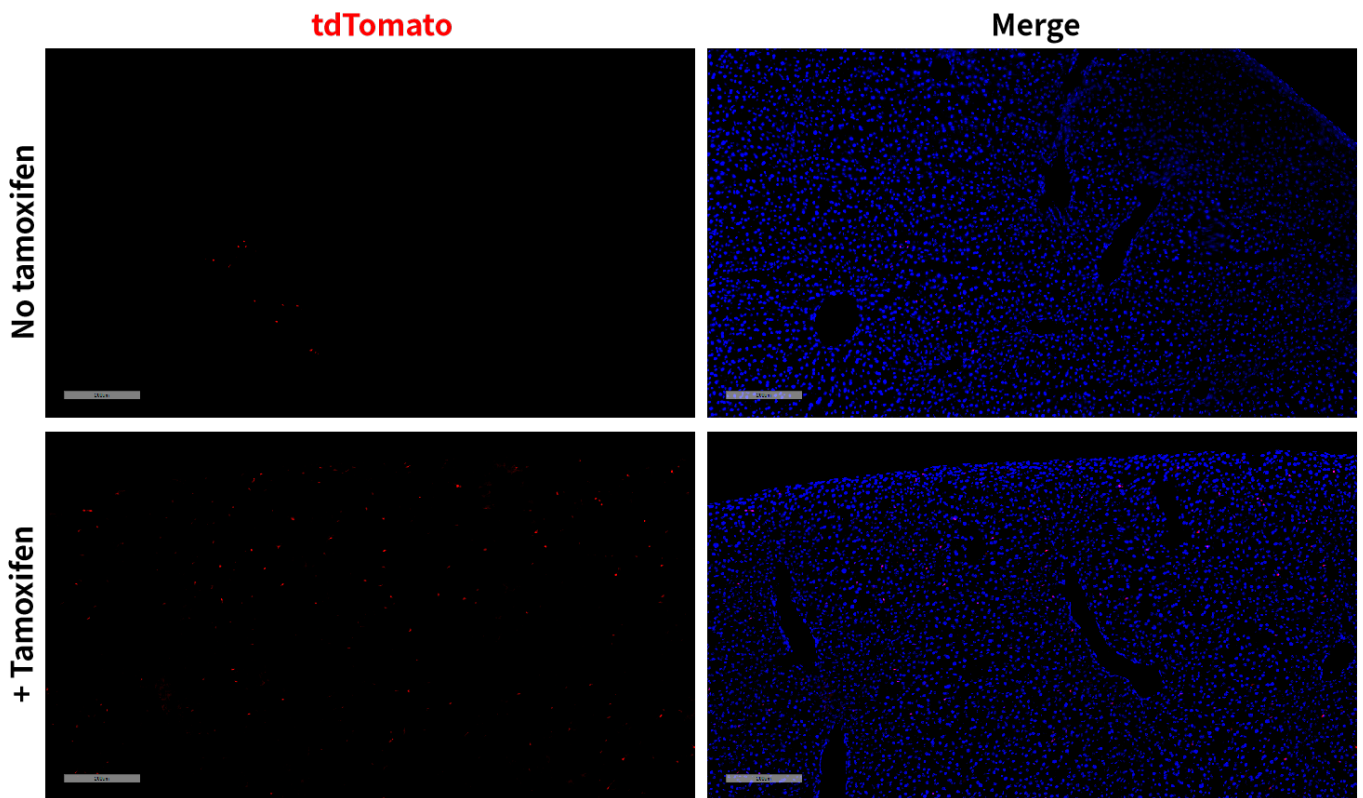


Fig 1. Cre-mediated recombination in liver of *Mrc1CreERT2/+; Rosa26tdTomato/+* mice.

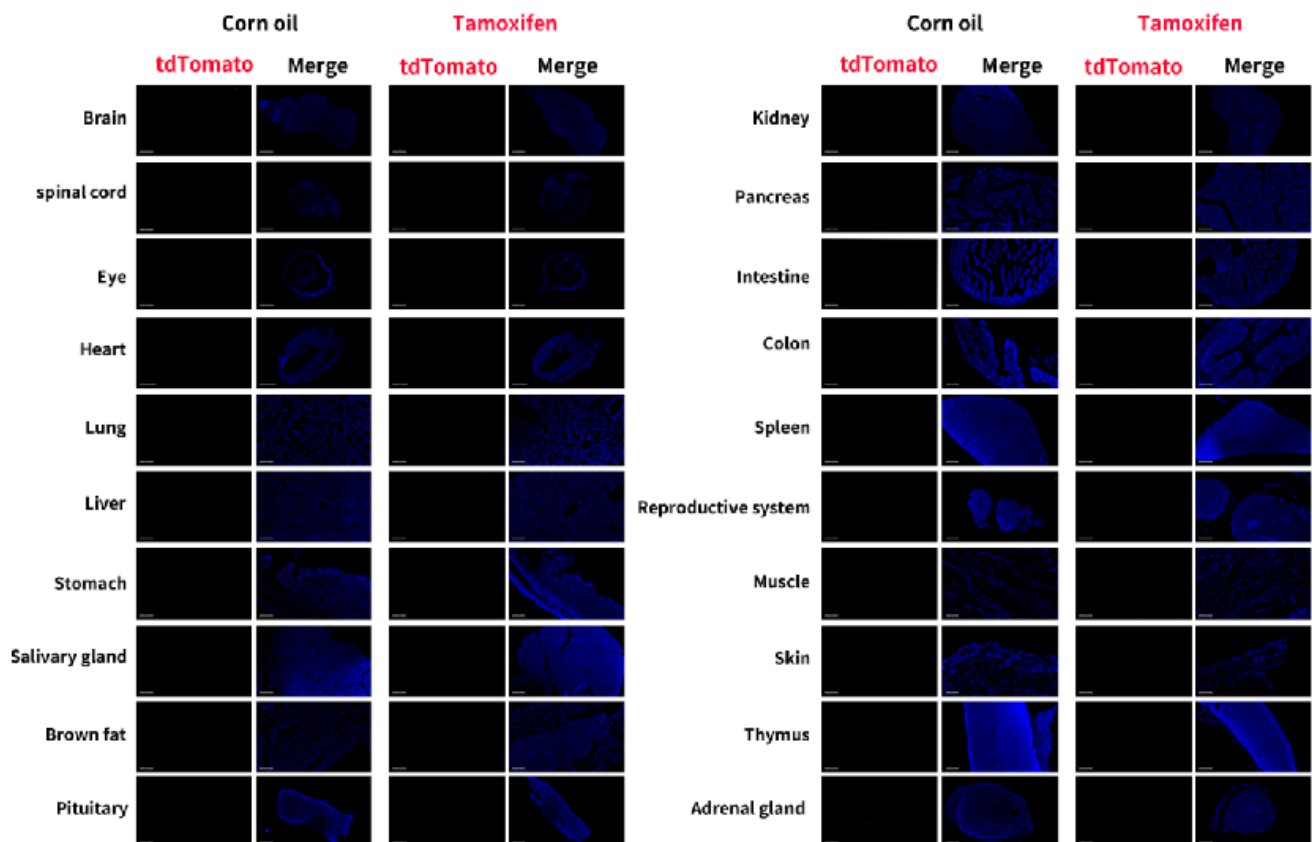


Fig 2. Detection of tdTomato (red) in various tissues of *Mrc1CreERT2/+; Rosa26tdTomato/+* mice. Expression tissues include: liver. A few cells expressed in large intestine, spleen, skin, thymus. Tissues that unexpressed include brain, spinal cord, retina, heart, lung,

stomach, salivary glands, brown fat, pituitary gland, kidney, pancreas, small intestine, testis, muscle, adrenal gland. (4.5-month old, male) (For more detailed information please contact our technical advisor.)
