

# Klrd1-2A-Cre

系統名	C57BL/6Smoc- <i>Klrd1</i> <sup>em(2A-Cre-WPRE-PolyA)Smoc</sup>
SMOC番号	NM-KI-220039
維持形態	Sperm cryopreservation

## 遺伝子の概要

Gene Symbol Klrd1	Synonyms	CD94
	NCBI ID	<a href="#">16643</a>
	MGI ID	<a href="#">1196275</a>
	Ensembl ID	<a href="#">ENSMUSG00000030165</a>
	Human Ortholog	KLRD1

## 説明

2A-Cre-WPRE-PolyA expression cassette was knocked into the Klrd1 gene start codon site.  
\*Literature published using this strain should indicate: Klrd1-2A-Cre mice (Cat. NO. NM-KI-220039) were purchased from Shanghai Model Organisms Center, Inc..

## 表現型データ

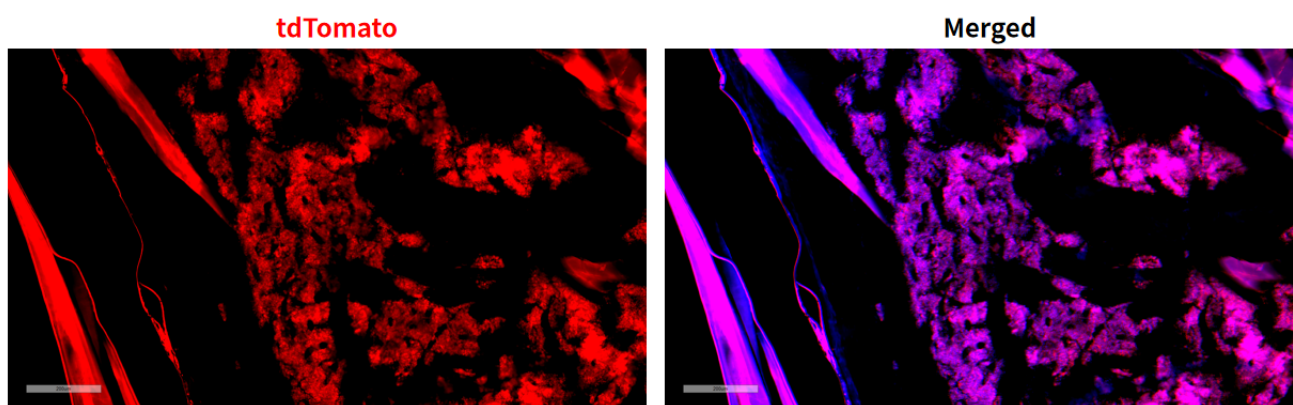


Fig 1. Cre-mediated recombination in bone marrow of Klrd1<sup>Cre/+</sup>; Rosa26<sup>tdTomato/+</sup> mice.

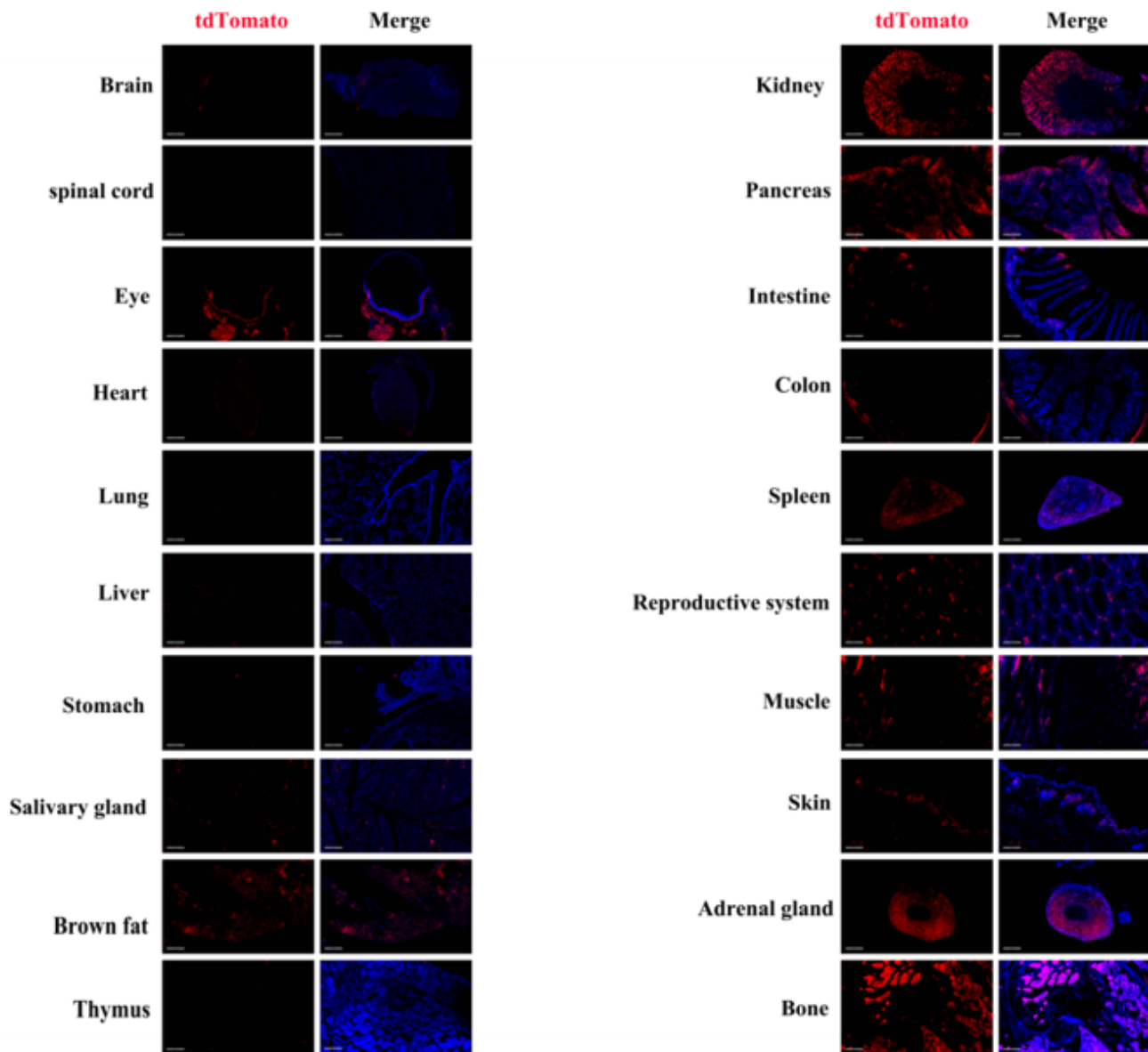


Fig 2. Detection of tdTomato (red) in various tissues of *Klr1cre/+; Rosa26tdTomato/+* mice. Expression tissues include: brain, bone marrow, liver, salivary gland, brown fat, kidney, pancreas, small intestine, colon, spleen, testis, skeletal muscle, skin, adrenal gland. A few cells expressed in eyeball, heart, lung, stomach, thymus. Tissues that unexpressed include spinal cord. (21-week old, male) (For more detailed information please contact our technical advisor.)