

CT26-hPD-L1

Strain Information

SMOC番号	NM-S24A-TM01
Cell Line	CT26- <i>Cd274em1(hPDL1)/Smoc</i>
維持形態	Validation of tumorigenic capacity completed
説明	The endogenous mouse <i>Cd274</i> (also known as PD-L1) gene was replaced by human <i>CD274</i> gene.
	*Literature published using this strain should indicate: CT26-hPD-L1 cell line (Cat. NO. NM-S24A-TM01) was purchased from Shanghai Model Organisms Center, Inc..

表現型データ

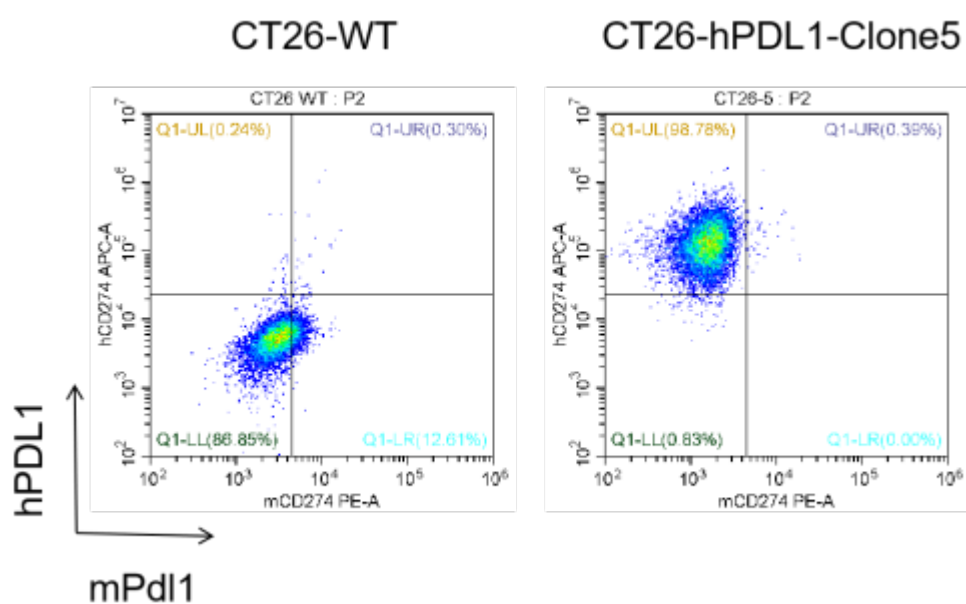


Figure 1. hPD-L1 expression in wild-type CT26 and CT26-hPD-L1 cell lines.

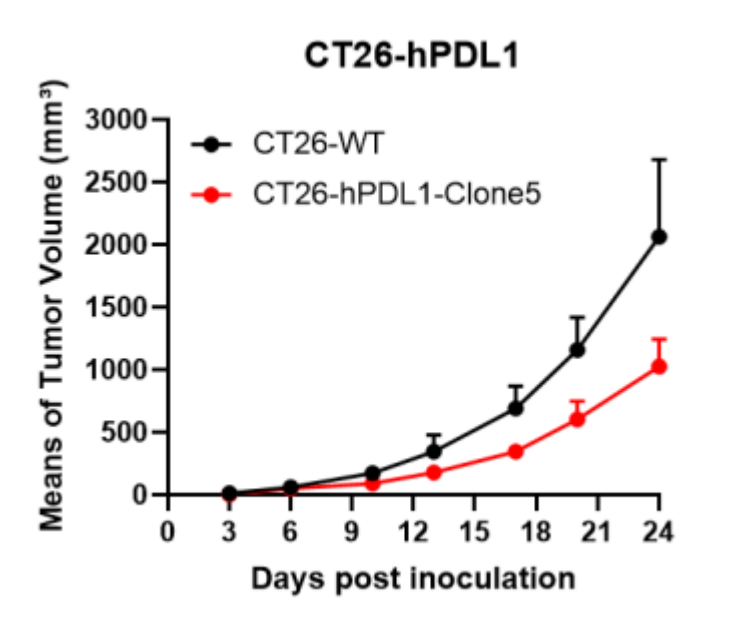


Figure 2. Tumor growth curve of CT26-hPDL1 syngeneic model (n=3).

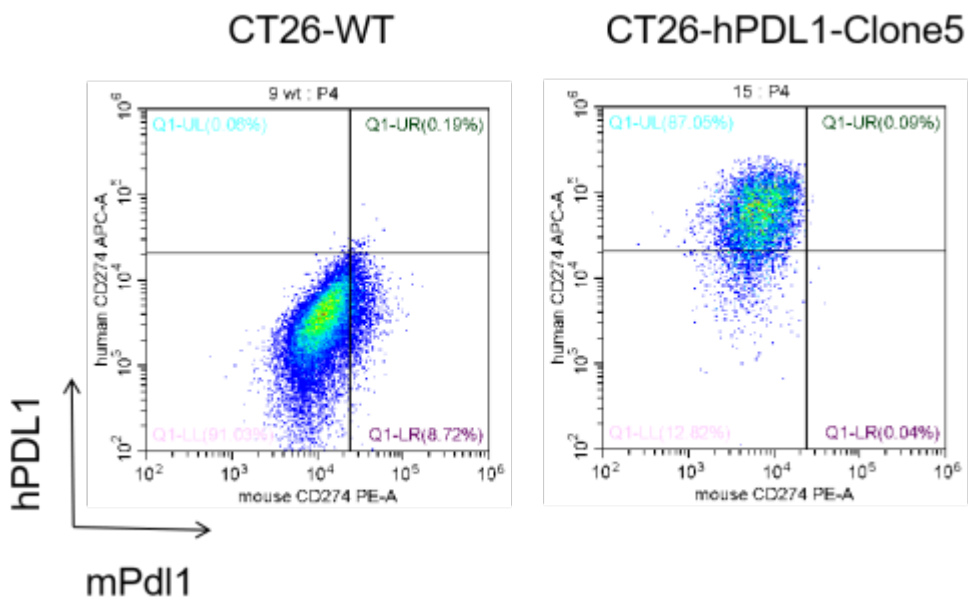


Figure 3. The expression of hPDL1 in humanized modified tumors by FACS.