

MC38-hCLDN 18.2/hCD47

Strain Information

SMOC番号 NM-S13-TM19

Cell Line MC38-*Tg(hCLDN 18.2)Cd47*^{tm(hCD47)^{Smoc}}

維持形態 Validation of pharmacodynamic assays completed

説明 This cell line carry humanized CLDN18.2 and CD47.

*Literature published using this strain should indicate: MC38-hCLDN 18.2/hCD47 cell line (Cat. NO. NM-S13-TM19) was purchased from Shanghai Model Organisms Center, Inc..

表現型データ

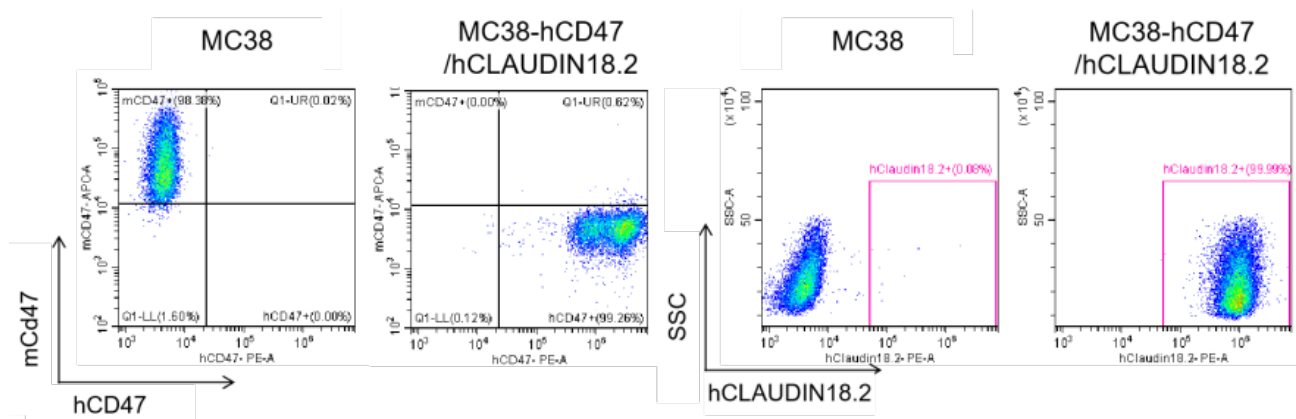


Figure 1. hCD47 and hCLAUDIN18.2 expression in MC38-hCD47/hCLAUDIN18.2 cells.

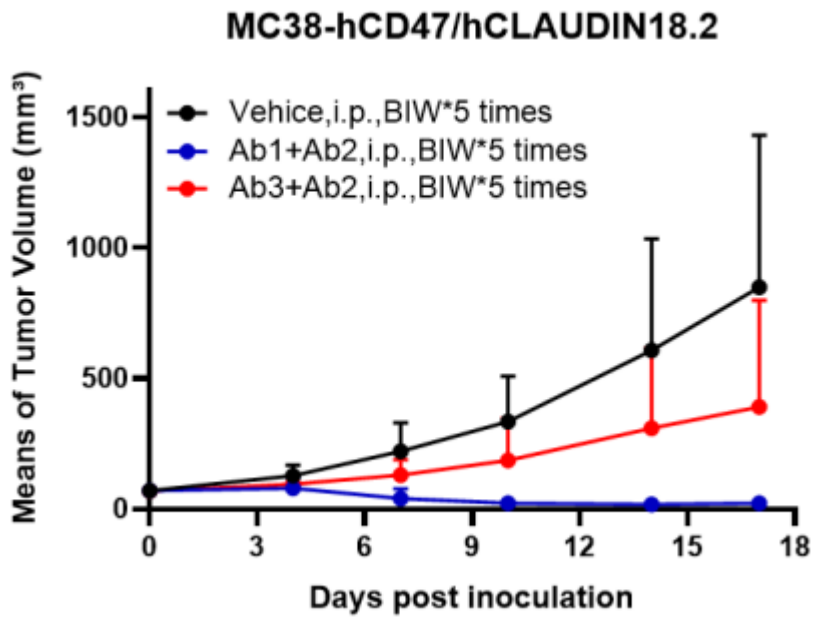


Figure 2. Antitumor activity of antibodies (n=6).