

MC38-hPD-L1/hTROP2

Strain Information

SMOC番号 NM-S13-TM80

Cell Line MC38-*Cd274*^{tm(hPDL1)}*Trop2*^{tm(hTROP2)Smoc}

維持形態 Validation of tumorigenic capacity completed

説明 This cell line carry humanized CD274 and TROP2.

*Literature published using this strain should indicate: MC38-hPD-L1/hTROP2 cell line (Cat. NO. NM-S13-TM80) was purchased from Shanghai Model Organisms Center, Inc..

表現型データ

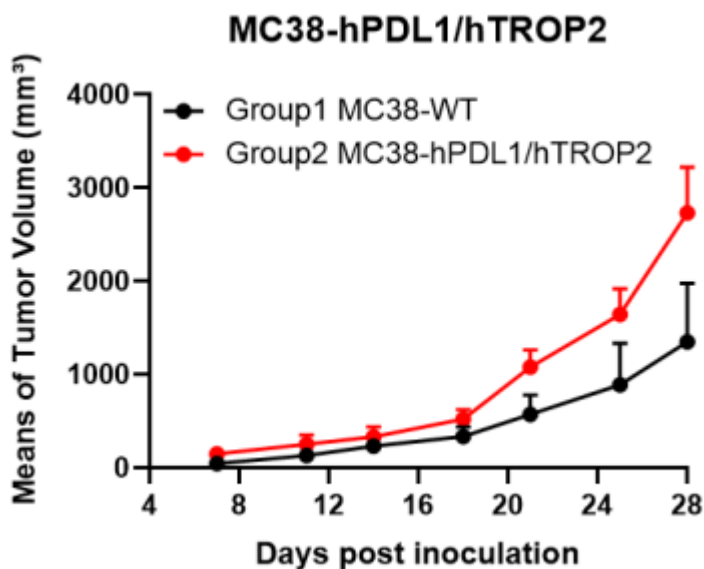


Figure 2. Tumor growth curve of MC38-hPDL1/hTROP2 syngeneic model (n=3).

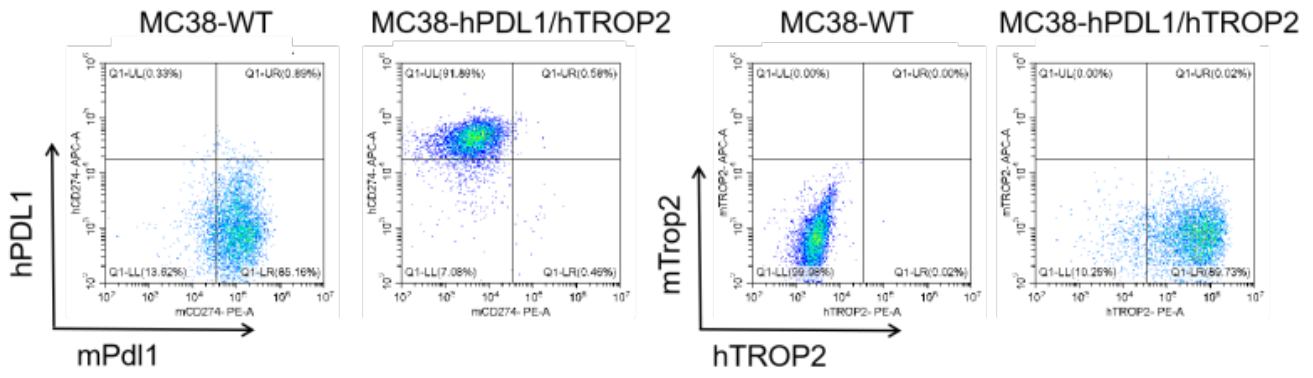


Figure 3. The expression of hPDL1 and hTROP2 in humanized modified tumors by FACS.