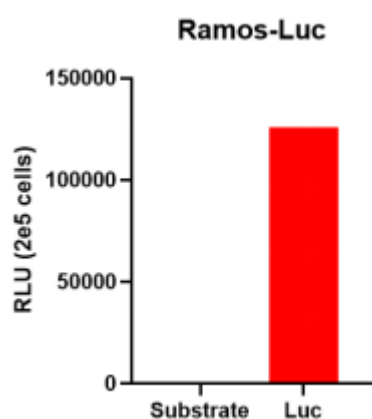


# Ramos-Luc

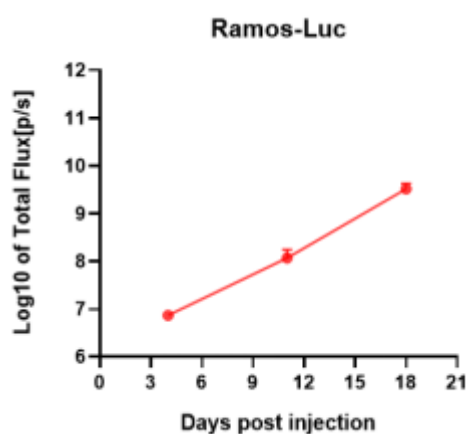
## Strain Information

SMOC番号	NM-B19-TG01
Cell Line	Ramos-Tg(luc)/smoc
維持形態	Validation of tumorigenic capacity completed
説明	Luciferase-labeled human Ramos cell
	*Literature published using this strain should indicate: Ramos-Luc cell line (Cat. NO. NM-B19-TG01) was purchased from Shanghai Model Organisms Center, Inc..

## 表現型データ



**Figure 1. Luciferase activity assay of Ramos-Luc cell line**



**Figure 2. Signal increase curve in Ramos-Luc xenograft model (n=5)**

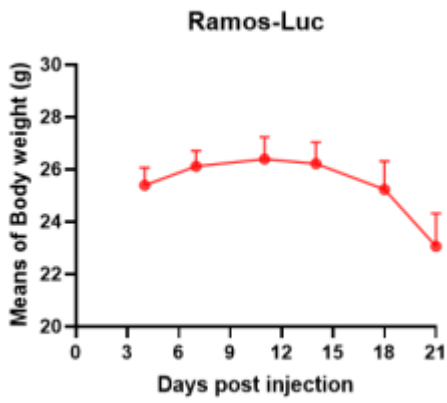


Figure 3. Body weight change of Ramos-Luc xenograft model (n=5)

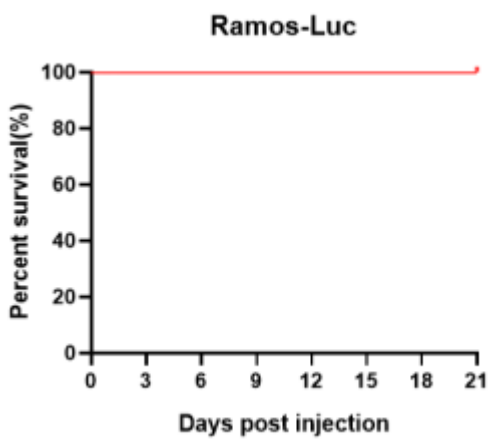


Figure 4. Survival curve of Ramos-Luc xenograft mouse model (n=5)

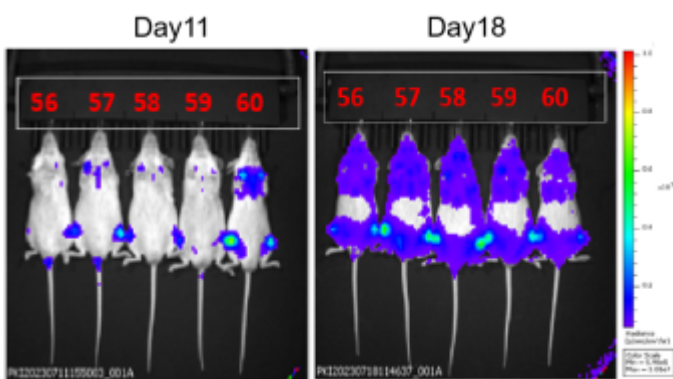


Figure 5. Bioluminescence imaging of Ramos-Luc xenograft mouse model (n=5)