

Calu-6

Strain Information

SMOC番号 NM-F12

Cell Line Calu-6

維持形態 Validation of tumorigenic capacity completed

説明 CaLu-06 is a human lung adenocarcinoma cell line. This cell line was established in 1971 from lung metastasis in lung adenocarcinoma.

*Literature published using this strain should indicate: Calu-6 cell line (Cat. NO. NM-F12) was purchased from Shanghai Model Organisms Center, Inc..

表現型データ

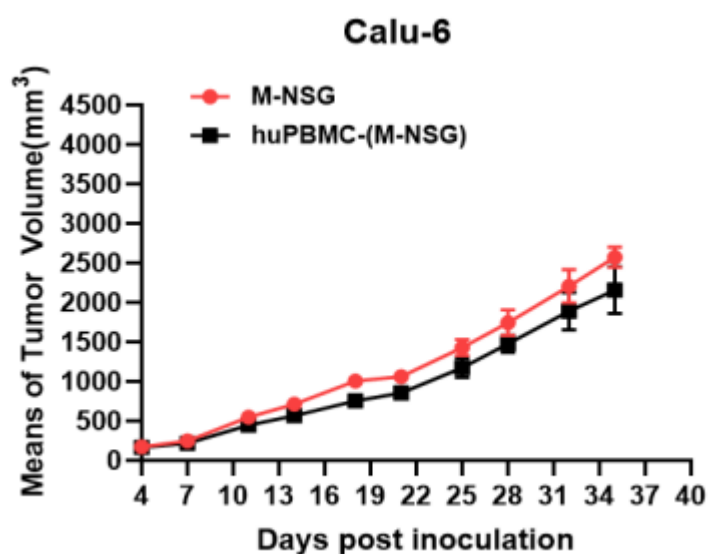


Fig1. Tumor growth curve of Calu-6 xenograft model (n=4)

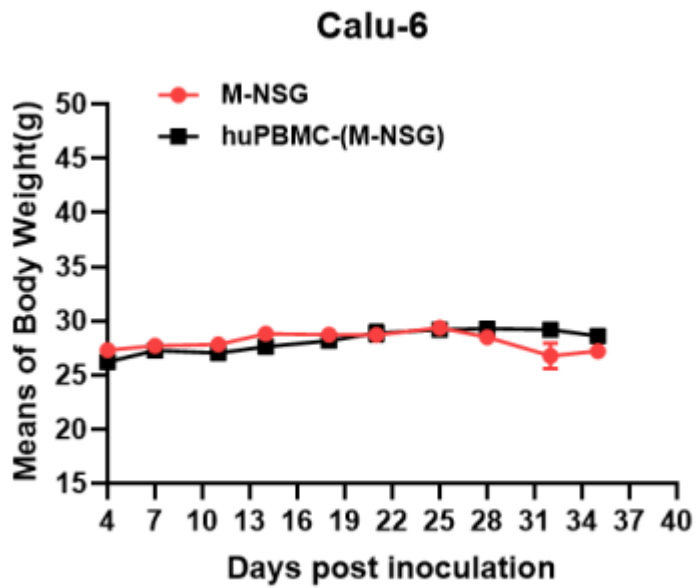


Fig2. Body weight change of Calu-6 xenograft model (n=4)

*Wild-type cell lines are not for sale, and only applied to construction of tumor bearing mice and in-vivo efficacy studies.