

EBC-1

Strain Information

| | |
|-----------|---|
| SMOC番号 | NM-F23 |
| Cell Line | EBC-1 |
| 維持形態 | Validation of tumorigenic capacity completed |
| 説明 | <p>The EBC-1 line was established from a metastatic skin tumor of a patient with squamous cell carcinoma of the lung.</p> <p>*Literature published using this strain should indicate: EBC-1 cell line (Cat. NO. NM-F23) was purchased from Shanghai Model Organisms Center, Inc..</p> |

表現型データ

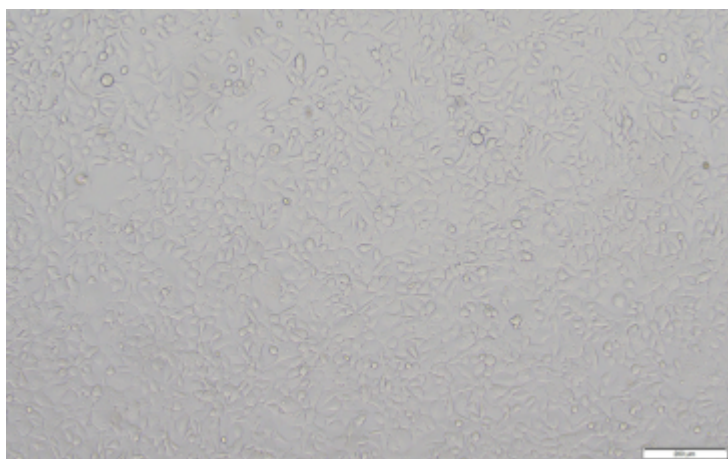
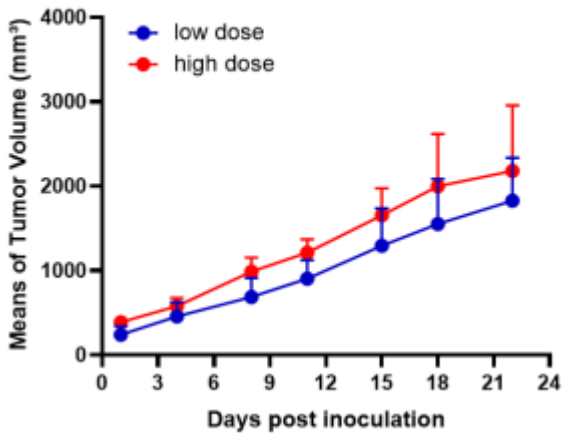


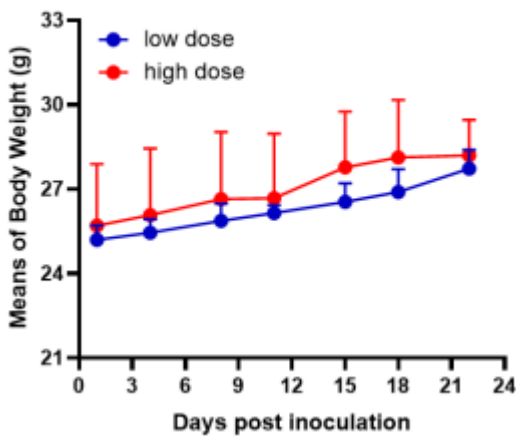
Fig1. Morphology of EBC-1 cell line.

EBC-1



A

EBC-1



B

Fig2. Analysis of Tumorigenesis in M-NSG mice (n=4) . a Tumor volume was measured by time. b Body weight was simultaneously checked.

*Wild-type cell lines are not for sale, and only applied to construction of tumor bearing mice and in-vivo efficacy studies.