

# SNU-16

## Strain Information

SMOC番号 NM-W05

Cell Line SNU-16

維持形態 Validation of tumorigenic capacity completed

説明 SNU-16 is a cell line exhibiting epithelial morphology that was isolated in 1987 from ascites derived from a 33-year-old, female, Asian, stomach cancer patient prior to chemotherapy.

\*Literature published using this strain should indicate: SNU-16 cell line (Cat. NO. NM-W05) was purchased from Shanghai Model Organisms Center, Inc..

## 表現型データ

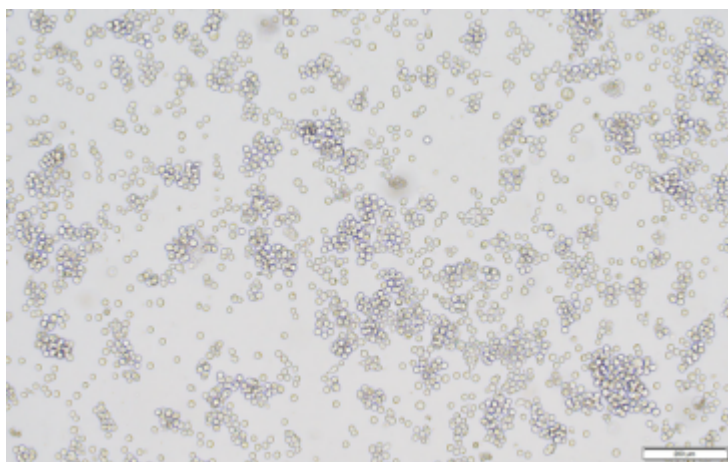


Fig1. Morphology of SNU-16 cell line.

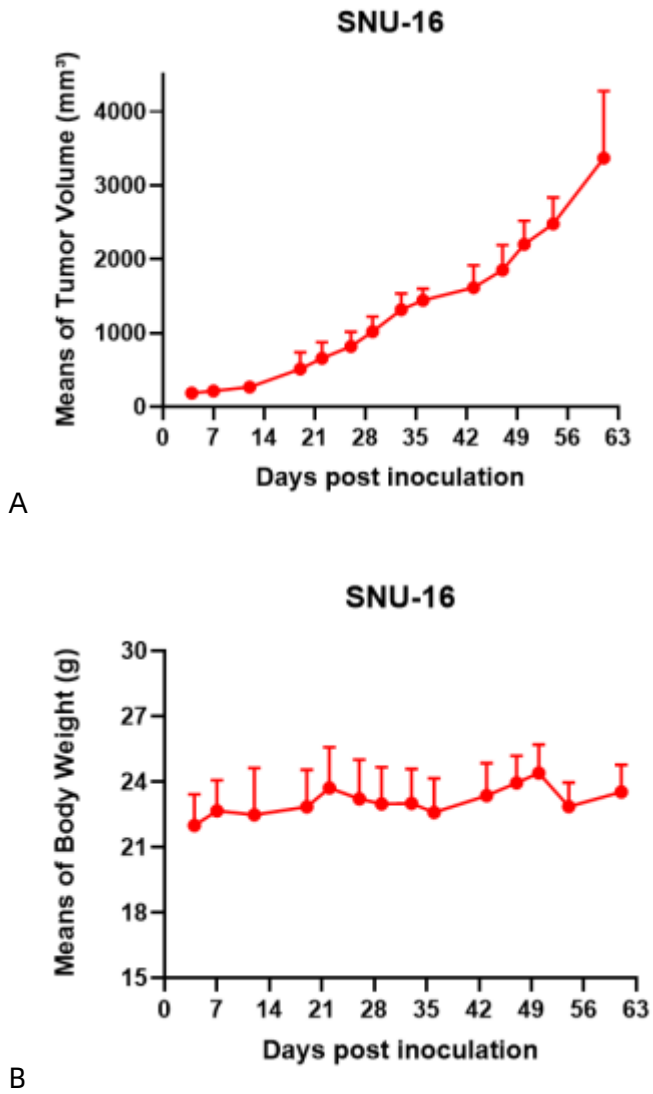
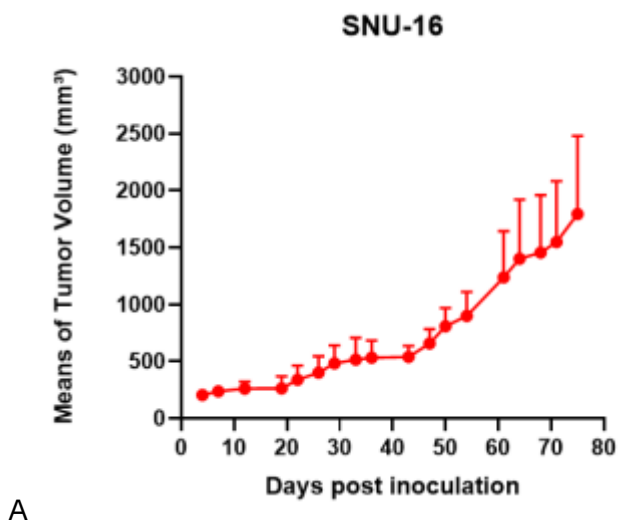
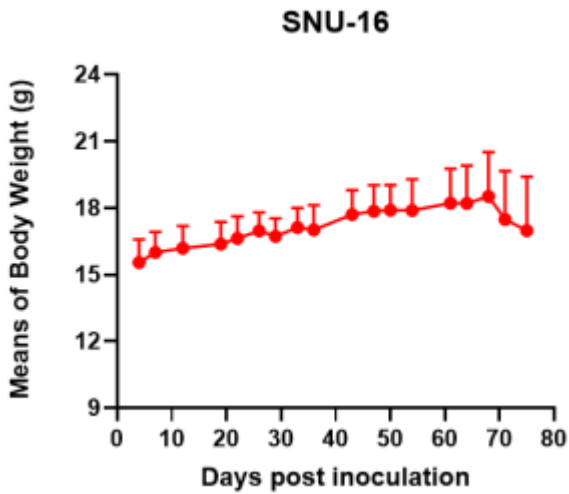


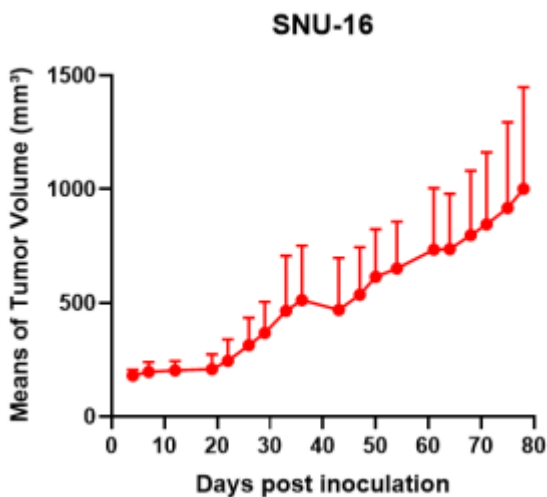
Fig2. Analysis of Tumorigenesis in M-NSG mice (n=6) . A Tumor volume was measured by time. B Body weight was simultaneously checked.



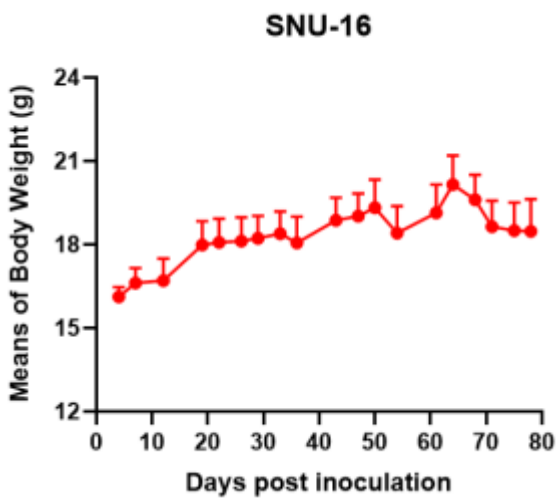


B

Fig3. Analysis of Tumorigenesis in CB-17 SCID mice (n=6) . A Tumor volume was measured by time. B Body weight was simultaneously checked.



A



B

Fig4. Analysis of Tumorigenesis in Balb/c nude mice (n=6) . A Tumor volume was measured by time. B Body weight was simultaneously checked.

\*Wild-type cell lines are not for sale, and only applied to construction of tumor bearing mice and in-vivo efficacy studies.

---