

# NALM-6 Clone5

## Strain Information

SMOC番号	NM-B29
Cell Line	NALM-6 Clone5
維持形態	Validation of tumorigenic capacity completed
説明	Established from the peripheral blood of a 19-year-old man with acute lymphoblastic leukemia (ALL) in relapse in 1976.  *Literature published using this strain should indicate: NALM-6 Clone5 cell line (Cat. NO. NM-B29) was purchased from Shanghai Model Organisms Center, Inc..

## 表現型データ

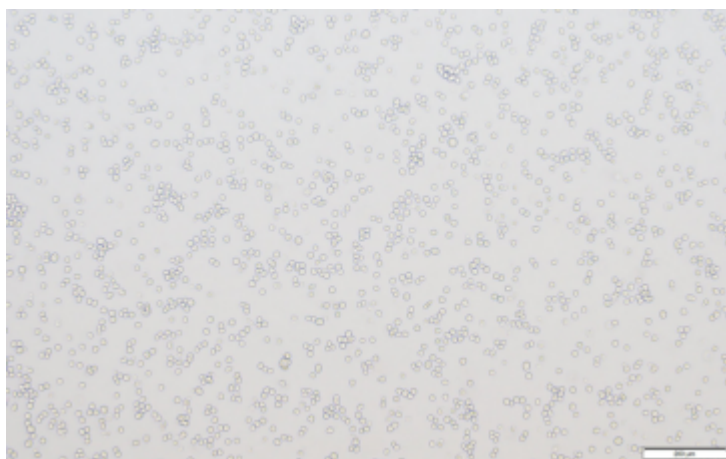
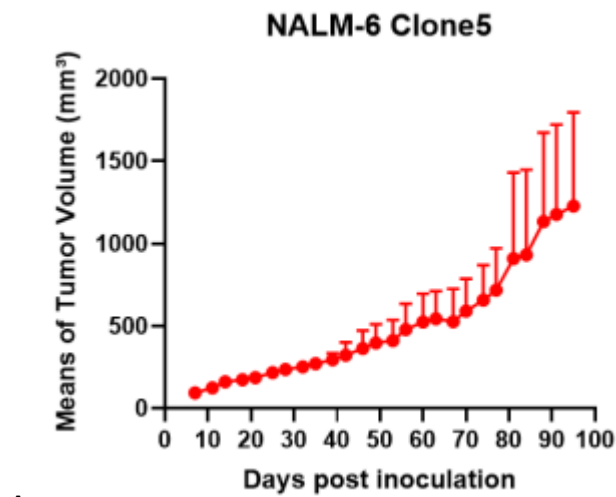
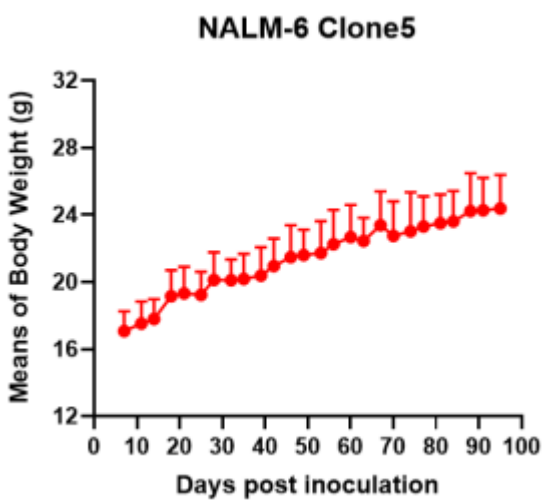


Fig1. Morphology of NALM-6 Clone5 cell line.

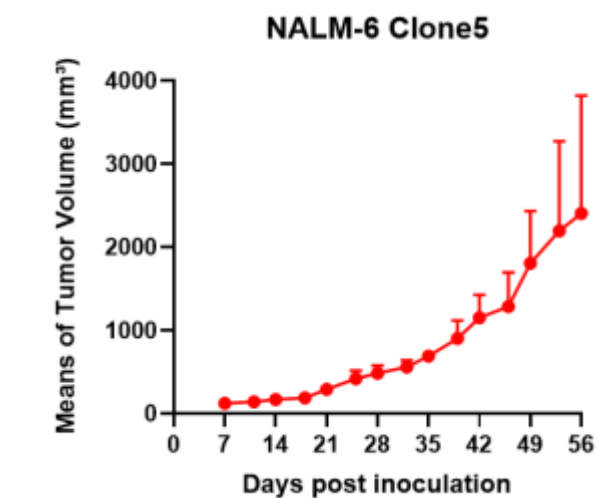


A

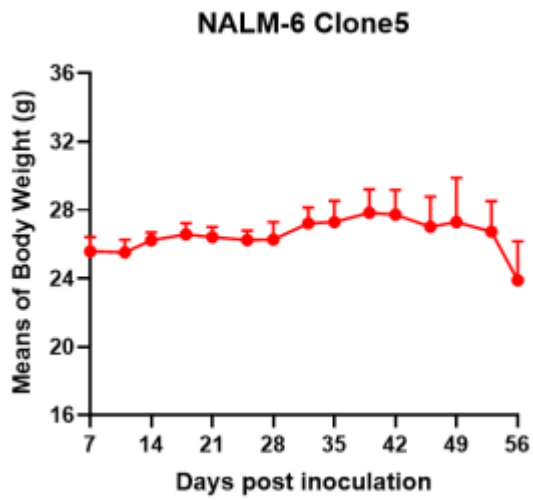


B

Fig2. Analysis of Tumorigenesis in Balb/c nude mice (n=4) . A Tumor volume was measured by time. B Body weight was simultaneously checked.



A



B

Fig3. Analysis of Tumorigenesis in M-NSG mice (n=2) . A Tumor volume was measured by time. B Body weight was simultaneously checked.

\*Wild-type cell lines are not for sale, and only applied to construction of tumor bearing mice and in-vivo efficacy studies.