

# Ca Ski

## Strain Information

SMOC番号	NM-Z03
Cell Line	Ca Ski
維持形態	Validation of tumorigenic capacity completed
説明	<p>Ca Ski cell line is derived from an epidermoid carcinoma of the cervix metastatic to the small bowel mesentery of a 40-year-old Caucasian.</p> <p>*Literature published using this strain should indicate: Ca Ski cell line (Cat. NO. NM-Z03) was purchased from Shanghai Model Organisms Center, Inc..</p>

## 表現型データ

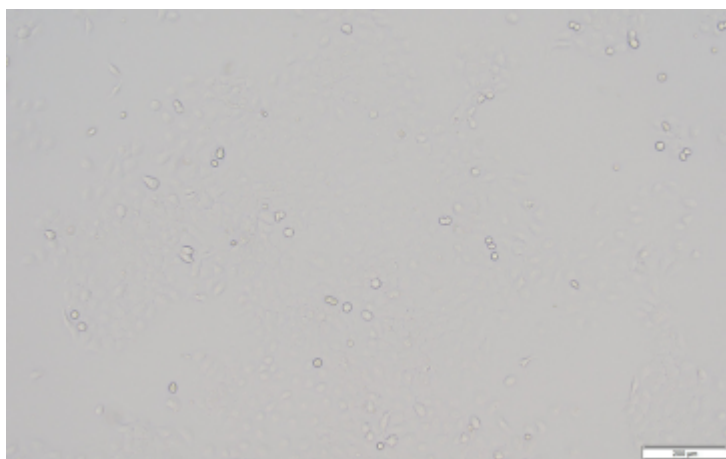
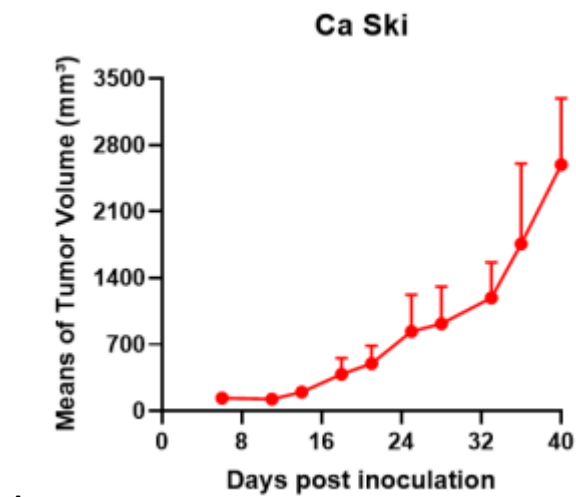
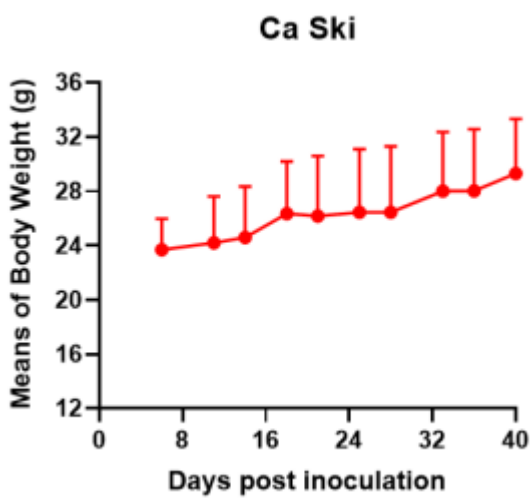


Fig1. Morphology of Ca Ski cell line.



A



B

Fig2. Analysis of Tumorigenesis in M-NSG mice (n=4) . a Tumor volume was measured by time. b Body weight was simultaneously checked.

**\*Wild-type cell lines are not for sale, and only applied to construction of tumor bearing mice and in-vivo efficacy studies.**