

OE19

Strain Information

SMOC番号	NM-YH07
Cell Line	OE19
維持形態	Validation of tumorigenic capacity completed
説明	<p>The cell line OE19, also known as JROECL19, was established in 1993 from an adenocarcinoma of gastric cardia/oesophageal gastric junction of a 72 year old male patient.</p> <p>*Literature published using this strain should indicate: OE19 cell line (Cat. NO. NM-YH07) was purchased from Shanghai Model Organisms Center, Inc..</p>

表現型データ

I. Characterization of in vivo growth kinetics

The OE19 cells were subcutaneously inoculated into the M-NSG mice (NM-NSG-001) and huPBMC-(M-NSG) mice (NM-NSG-015).

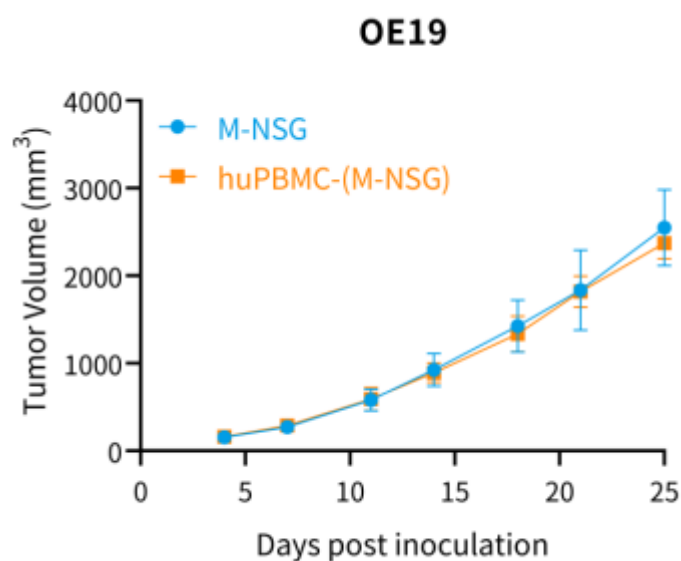


Figure 1. Tumor growth curve of OE19 xenograft model (n=6)

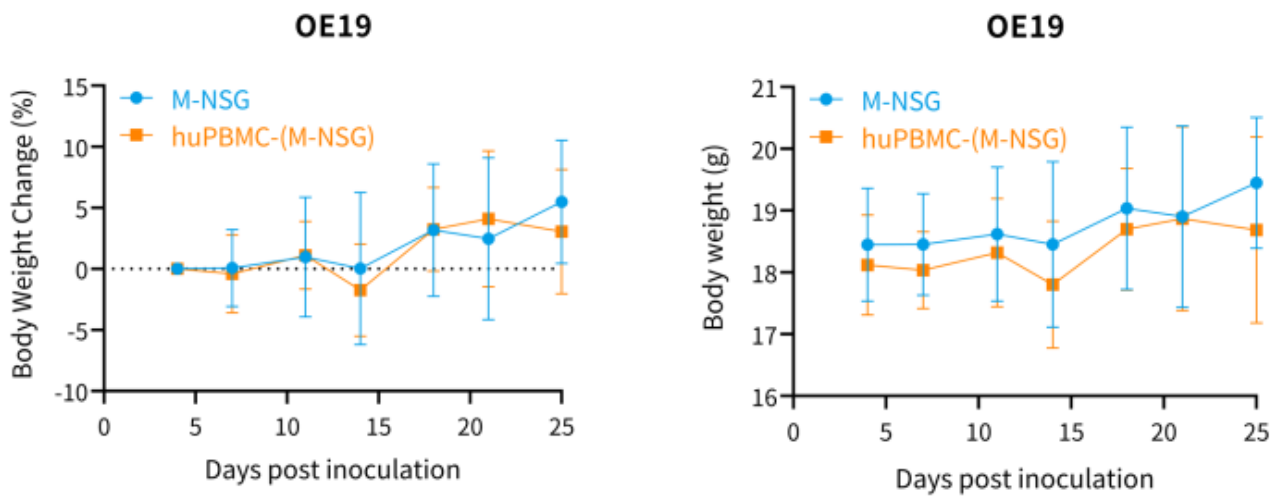


Figure 2. Body weight change of OE19 xenograft model (n=6)

*Wild-

type cell lines are not for sale, and only applied to construction of tumor bearing mice and in-vivo efficacy studies.