

# KP-4

## Strain Information

SMOC番号	NM-Y07
Cell Line	KP-4
維持形態	Validation of tumorigenic capacity completed
説明	Human tumor cell line secreting parathyroid hormone-related peptide (PTHrP) established from pancreatic tumor.  *Literature published using this strain should indicate: KP-4 cell line (Cat. NO. NM-Y07) was purchased from Shanghai Model Organisms Center, Inc..

## 表現型データ

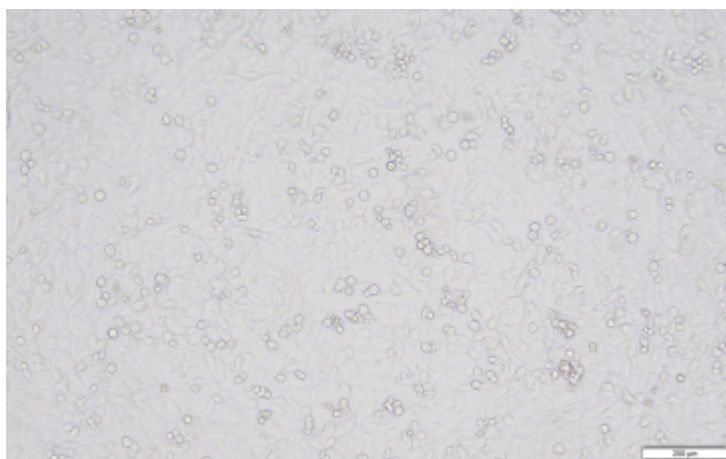
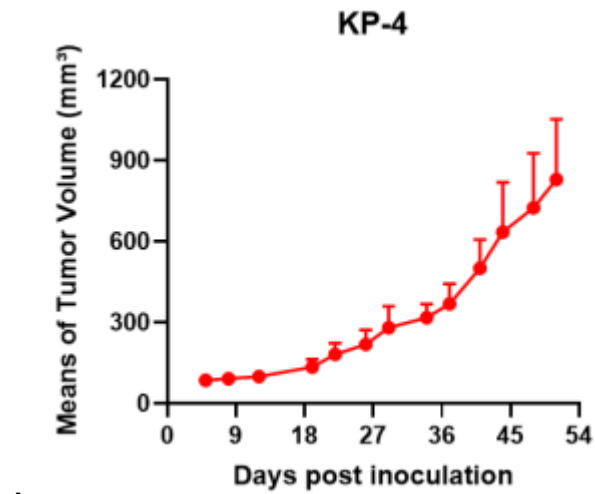
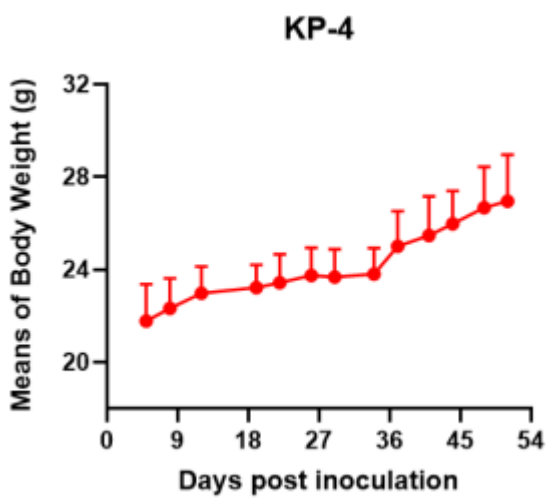


Fig1. Morphology of KP-4 cell line.



A



B

Fig2. Analysis of Tumorigenesis in M-NSG mice (n=4) . A Tumor volume was measured by time. B Body weight was simultaneously checked.

\*Wild-type cell lines are not for sale, and only applied to construction of tumor bearing mice and in-vivo efficacy studies.