

# J82

## Strain Information

SMOC番号	NM-P02A
Cell Line	J82
維持形態	Validation of tumorigenic capacity completed
説明	<p>The malignant human urothelial cell line (J82) was derived from bladder.</p> <p>*Literature published using this strain should indicate: J82 cell line (Cat. NO. NM-P02A) was purchased from Shanghai Model Organisms Center, Inc..</p>

## 表現型データ

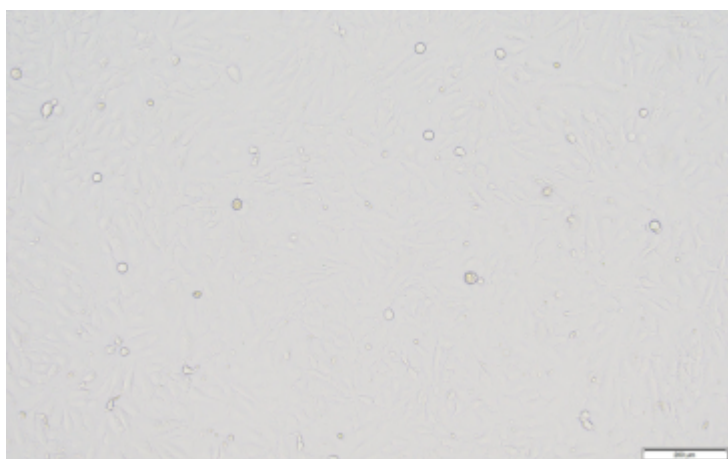
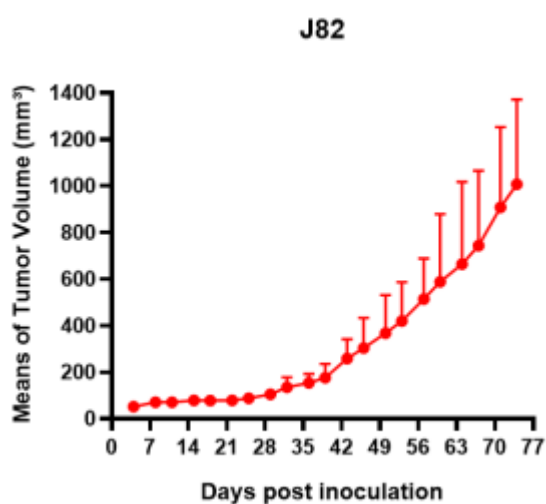
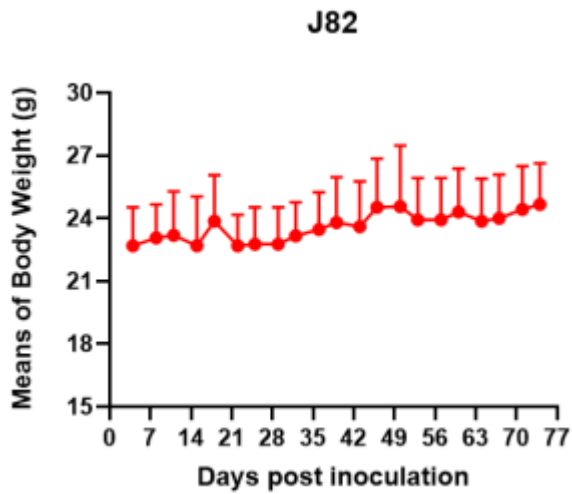


Fig1. Morphology of J82 cell line.



A



B

Fig2. Analysis of Tumorigenesis in M-NSG mice (n=4) . J82 cells were subcutaneously inoculated in M-NSG mice. a Tumor volume was measured by time. b Body weight was simultaneously checked.

\*Wild-type cell lines are not for sale, and only applied to construction of tumor bearing mice and in-vivo efficacy studies.