

Hepa 1-6

Strain Information

SMOC番号	NM-GA02
Cell Line	Hepa 1-6
維持形態	Validation of tumorigenic capacity completed
説明	<p>The Hepa1-6 cell line is a derivative of the BW7756 mouse hepatoma that arose in a C57/L mouse.</p> <p>*Literature published using this strain should indicate: Hepa 1-6 cell line (Cat. NO. NM-GA02) was purchased from Shanghai Model Organisms Center, Inc..</p>

表現型データ

I. Characterization of in vivo growth kinetics

The Hepa1-6 cells were subcutaneously inoculated into the C57BL/6 mice.

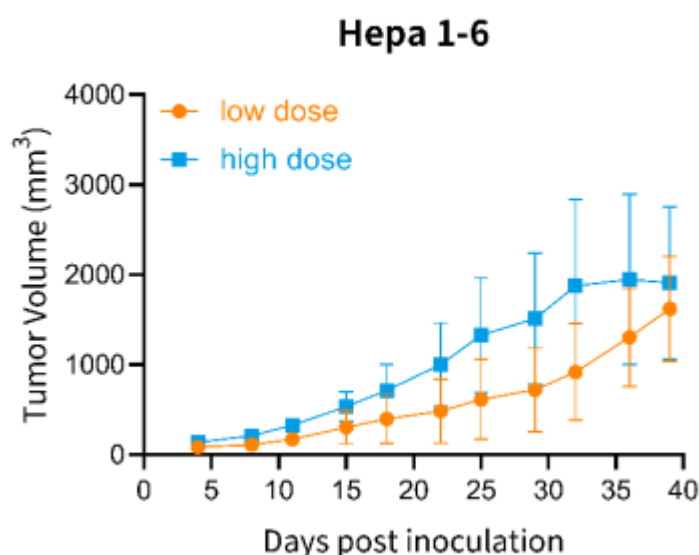


Figure 1. Tumor growth curve of Hepa1-6 allogeneic model (n=6)

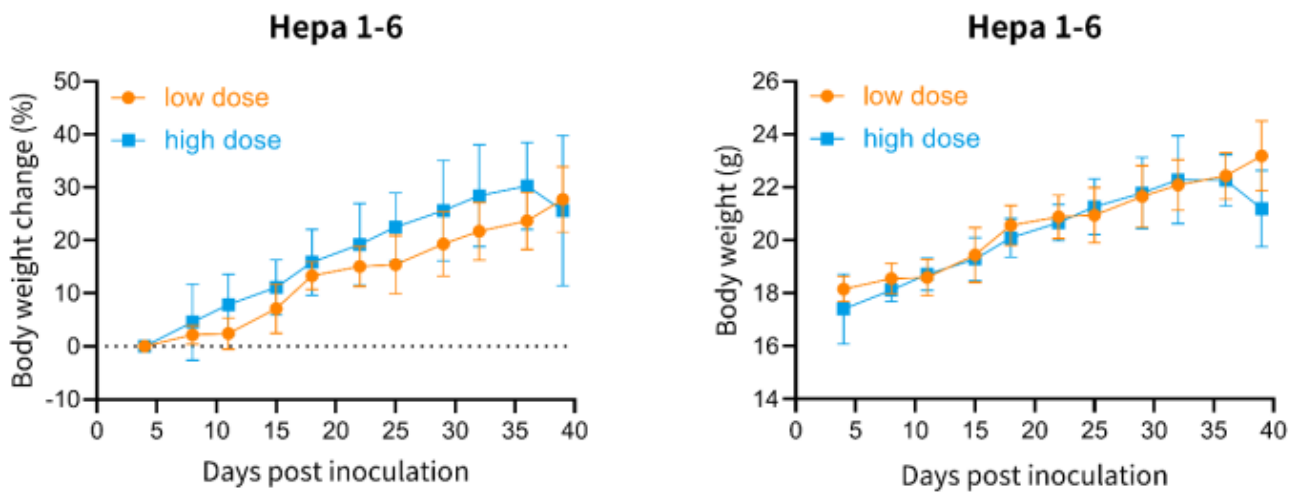


Figure 2. Body weight change of Hepa1-6 allogeneic model (n=6)

*Wild-type cell lines are not for sale, and only applied to construction of tumor bearing mice and in-vivo efficacy studies.