

CT26.WT

Strain Information

SMOC番号	NM-S24A
Cell Line	CT26.WT
維持形態	Validation of tumorigenic capacity completed
説明	<p>CT26 is an N-nitroso-N-methylurethane- (NNMU) induced, undifferentiated colon carcinoma cell line. It was cloned to generate the cell line designated CT26.WT (ATCC CRL-2638).</p> <p>*Literature published using this strain should indicate: CT26.WT cell line (Cat. NO. NM-S24A) was purchased from Shanghai Model Organisms Center, Inc..</p>

表現型データ

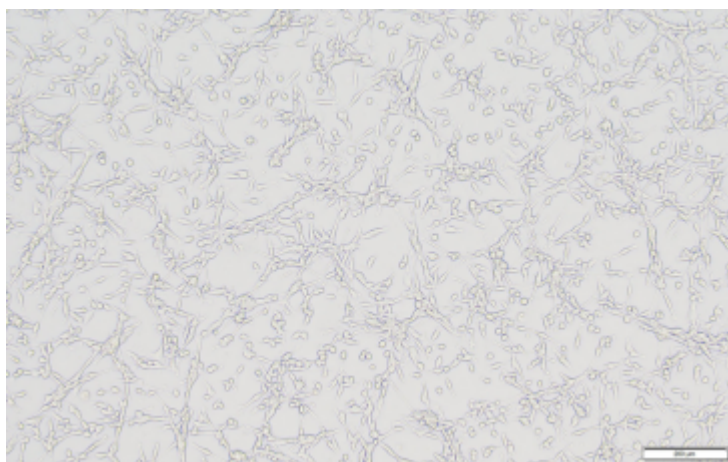


Fig1. Morphology of CT26.WT cell line.

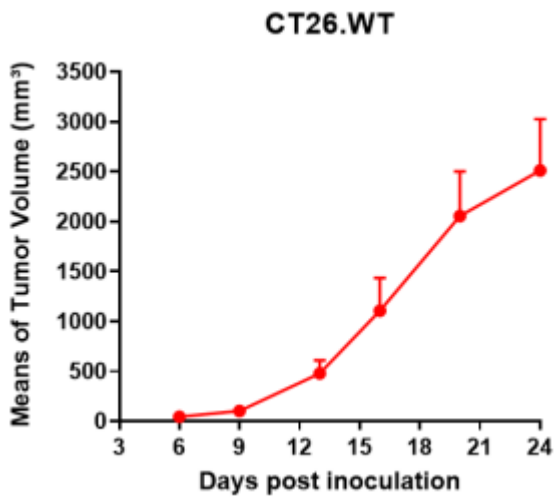
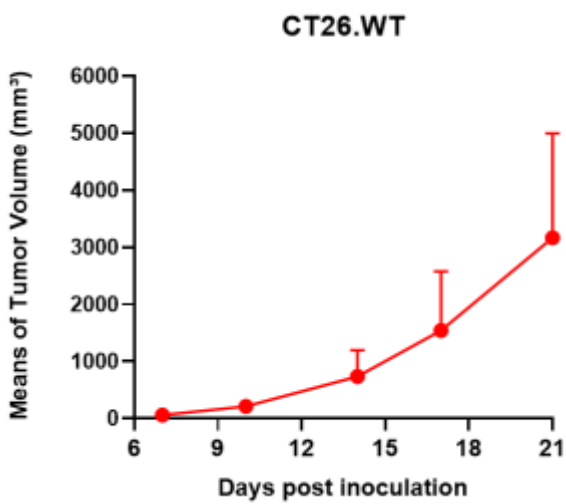
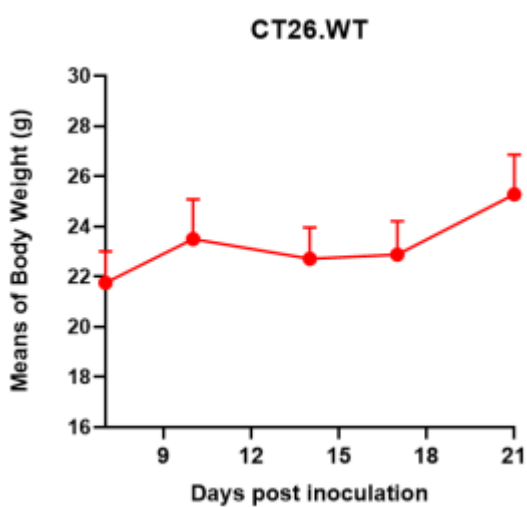


Fig2. Analysis of Tumorigenesis in Balb/c mice (n=4) .



A



B

Fig3. Analysis of Tumorigenesis in hSIRPA/hCD47(Balb/c) mice (n=5) . a Tumor volume was measured by time. b Body weight was simultaneously checked.

*Wild-type cell lines are not for sale, and only applied to construction of tumor bearing mice and

in-vivo efficacy studies.
