

# Renca

## Strain Information

SMOC番号 NM-S27A

Cell Line Renca

維持形態 Validation of tumorigenic capacity completed

説明 The Renca cell line was derived from a tumor that arose spontaneously as a renal cortical adenocarcinoma in Balb/cCr mice.

\*Literature published using this strain should indicate: Renca cell line (Cat. NO. NM-S27A) was purchased from Shanghai Model Organisms Center, Inc..

## 表現型データ

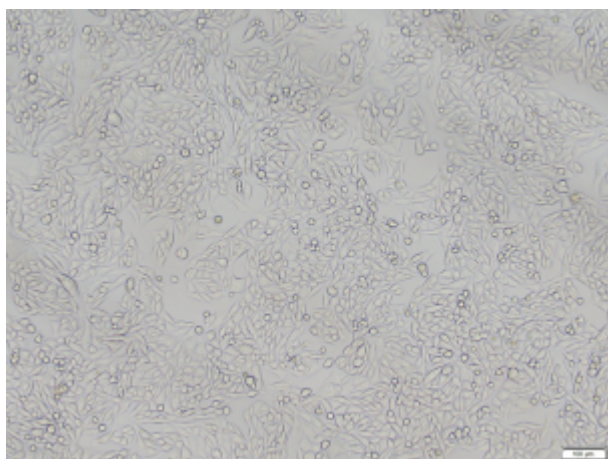


Fig1. Morphology of Renca cell line.

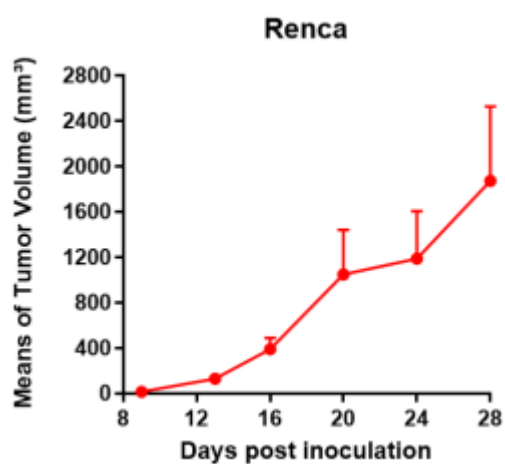


Fig2. Analysis of Tumorigenesis in Balb/c mice (n=4) .

\*Wild-type cell lines are not for sale, and only applied to construction of tumor bearing mice and in-vivo efficacy studies.

---