

C1498

Strain Information

SMOC番号	NM-S28A
Cell Line	C1498
維持形態	Validation of tumorigenic capacity completed
説明	<p>C1498 is an aggressive acute myeloid leukemia (AML) cell line which originated spontaneously in a C57BL/6 mouse.</p> <p>*Literature published using this strain should indicate: C1498 cell line (Cat. NO. NM-S28A) was purchased from Shanghai Model Organisms Center, Inc..</p>

表現型データ

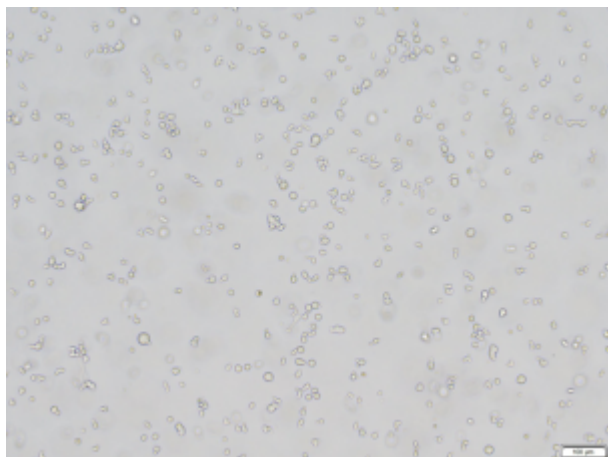
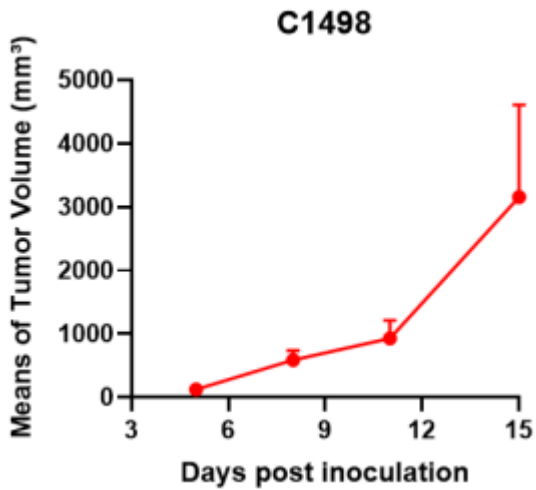
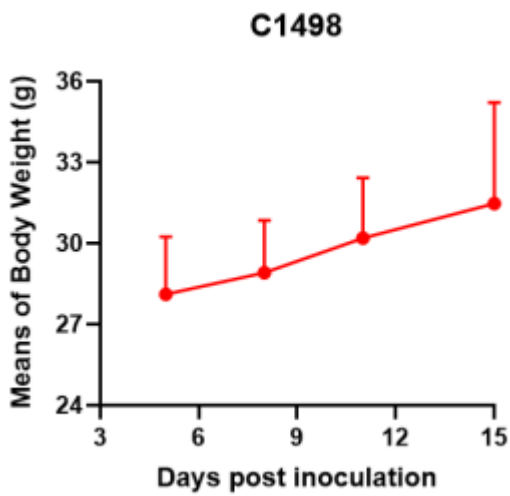


Fig1. Morphology of C1498 cell line.



A



B

Fig2. Analysis of Tumorigenesis in C57BL/6 mice (n=5) . a Tumor volume was measured by time. b Body weight was simultaneously checked.

*Wild-type cell lines are not for sale, and only applied to construction of tumor bearing mice and in-vivo efficacy studies.