

# LLC,LL/2(LLC1)

## Strain Information

SMOC番号	NM-S30A
Cell Line	LLC,LL/2(LLC1)
維持形態	Validation of tumorigenic capacity completed
説明	<p>LLC is a murine cell line of Lewis lung carcinoma, established from a tumor on the lung of a C57BL mouse following an implantation of primary Lewis lung carcinoma.</p> <p>*Literature published using this strain should indicate: LLC,LL/2(LLC1) cell line (Cat. NO. NM-S30A) was purchased from Shanghai Model Organisms Center, Inc..</p>

## 表現型データ

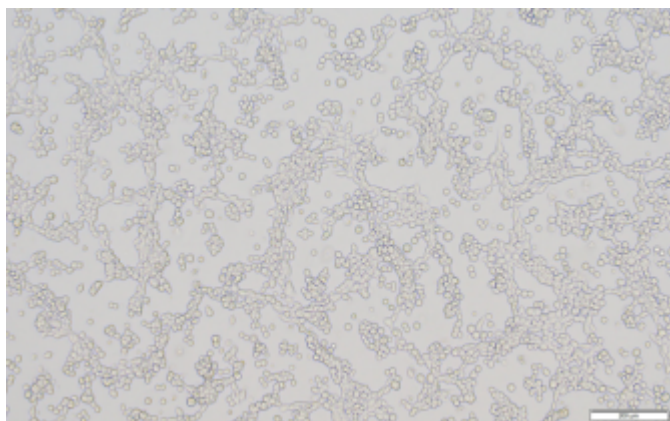
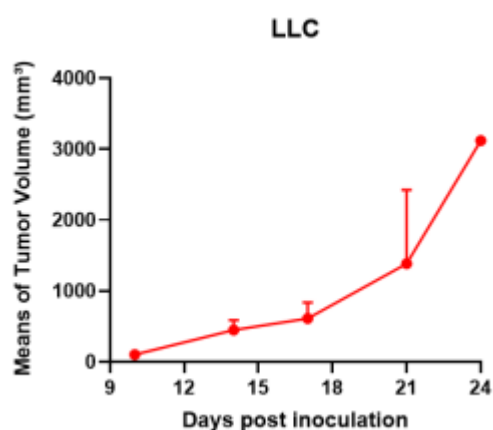
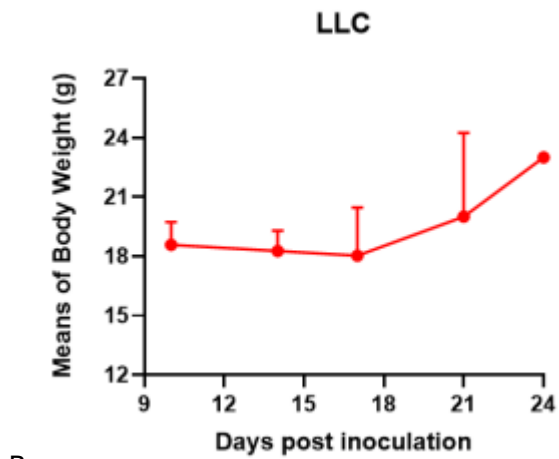


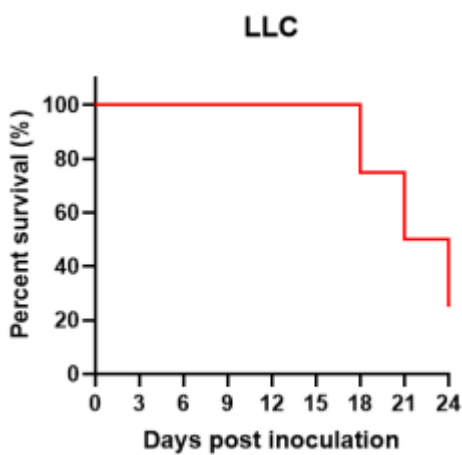
Fig1. Morphology of LLC cell line.



A



B



C

Fig2. Analysis of Tumorigenesis in C57BL/6 mice (n=4) . (A) Tumor volume, (B) body weight, and (C) survival ratio was checked by time.

\*Wild-type cell lines are not for sale, and only applied to construction of tumor bearing mice and in-vivo efficacy studies.