

B16-F10

Strain Information

SMOC番号	NM-S31A
Cell Line	B16-F10
維持形態	Validation of tumorigenic capacity completed
説明	<p>The B16-F10 cell line was generated as the 10 th serial passage subclone of the B16 parent tumor line in C57BL/6 mice.</p> <p>*Literature published using this strain should indicate: B16-F10 cell line (Cat. NO. NM-S31A) was purchased from Shanghai Model Organisms Center, Inc..</p>

表現型データ

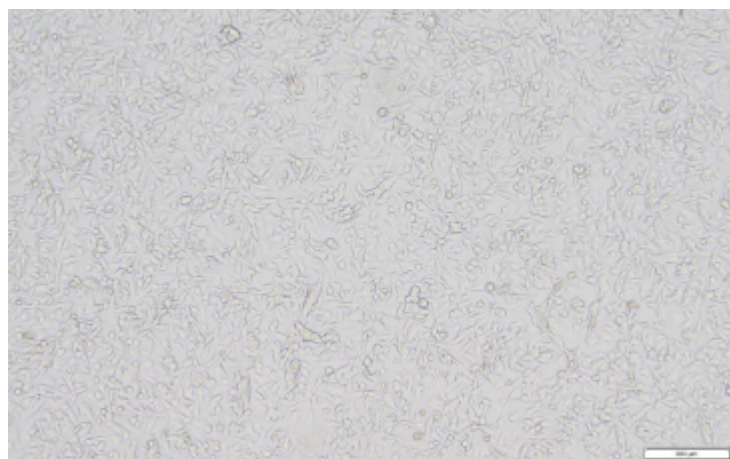
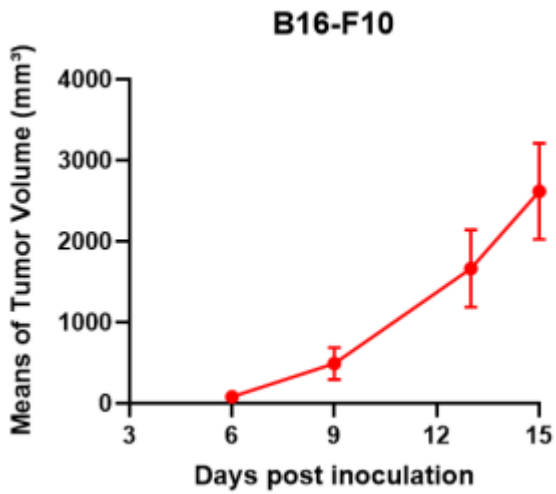
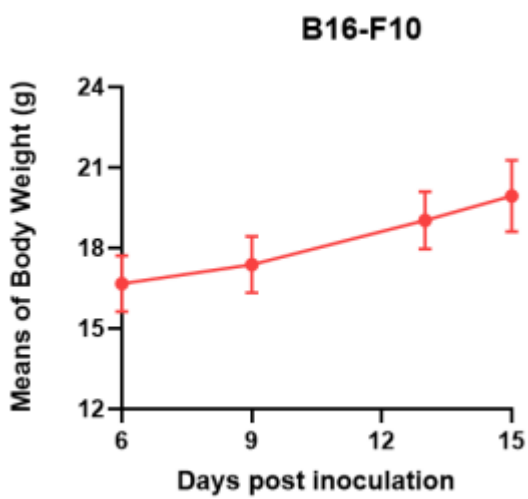


Fig1. Morphology of B16-F10 cell line.



A



B

Fig2. Analysis of Tumorigenesis in C57BL/6J mice (n=5) . a Tumor volume was measured by time. b Body weight was simultaneously checked.

*Wild-type cell lines are not for sale, and only applied to construction of tumor bearing mice and in-vivo efficacy studies.