

# Raji

## Strain Information

SMOC番号 NM-B07

Cell Line Raji

維持形態 Validation of tumorigenic capacity completed

説明 The Raji line of lymphoblast-like cells was established by R.J.V. Pulvertaft in 1963 from a Burkitt's lymphoma of the left maxilla of an 11-year-old Black male.

\*Literature published using this strain should indicate: Raji cell line (Cat. NO. NM-B07) was purchased from Shanghai Model Organisms Center, Inc..

## 表現型データ

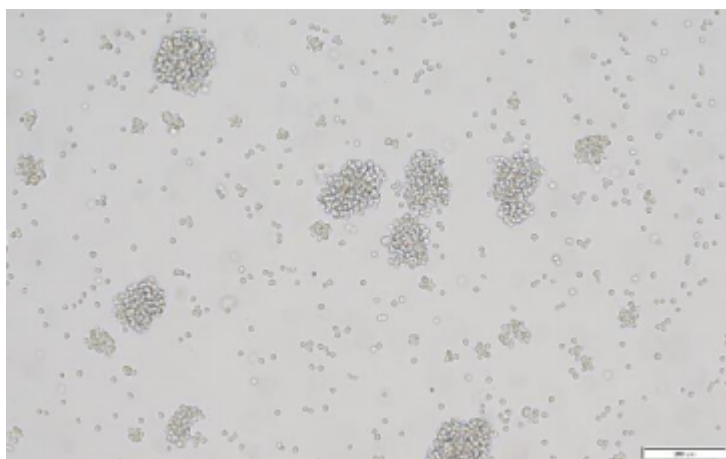
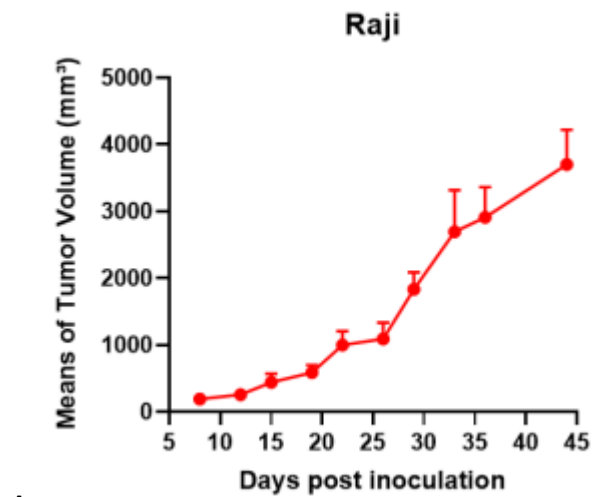
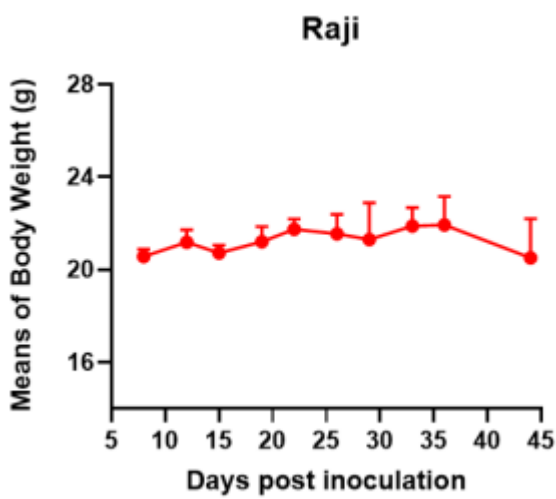


Fig1. Morphology of Raji cell line.



A



B

Fig2. Analysis of Tumorigenesis in M-NSG mice (n=5) . A Tumor volume was measured by time. B Body weight was simultaneously checked.

\*Wild-type cell lines are not for sale, and only applied to construction of tumor bearing mice and in-vivo efficacy studies.