

COLO 205

Strain Information

SMOC番号 NM-J07

Cell Line COLO 205

維持形態 Validation of tumorigenic capacity completed

説明 The COLO 205 cell line is made up of epithelial cells isolated in 1975 from ascitic fluid derived from a 70-year-old, Caucasian man with colon cancer.

*Literature published using this strain should indicate: COLO 205 cell line (Cat. NO. NM-J07) was purchased from Shanghai Model Organisms Center, Inc..

表現型データ

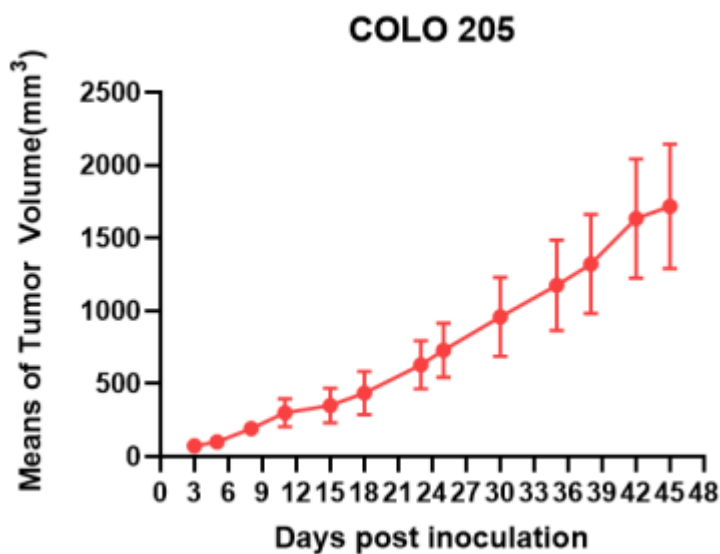


Fig1. Tumor growth curve of COLO 205 xenograft model (n=5)

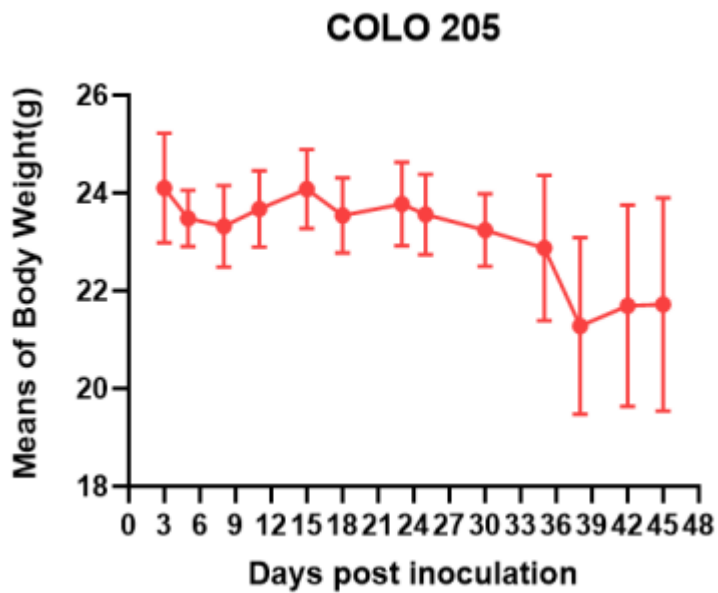


Fig2. Body weight change of COLO 205 xenograft model (n=5)

*Wild-type cell lines are not for sale, and only applied to construction of tumor bearing mice and in-vivo efficacy studies.