

MDA-MB-468

Strain Information

SMOC番号	NM-R04
Cell Line	MDA-MB-468
維持形態	Validation of tumorigenic capacity completed
説明	<p>MDA-MB-468 is a cell line with epithelial morphology that was isolated from a pleural effusion of a 51-year-old Black female patient with metastatic adenocarcinoma of the breast.</p> <p>*Literature published using this strain should indicate: MDA-MB-468 cell line (Cat. NO. NM-R04) was purchased from Shanghai Model Organisms Center, Inc..</p>

表現型データ

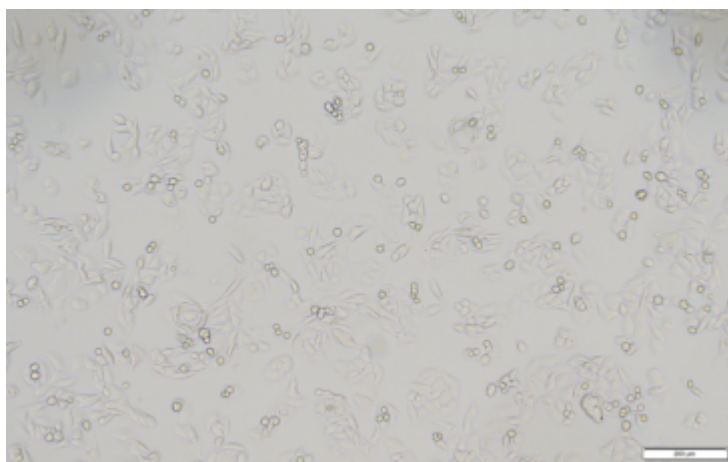
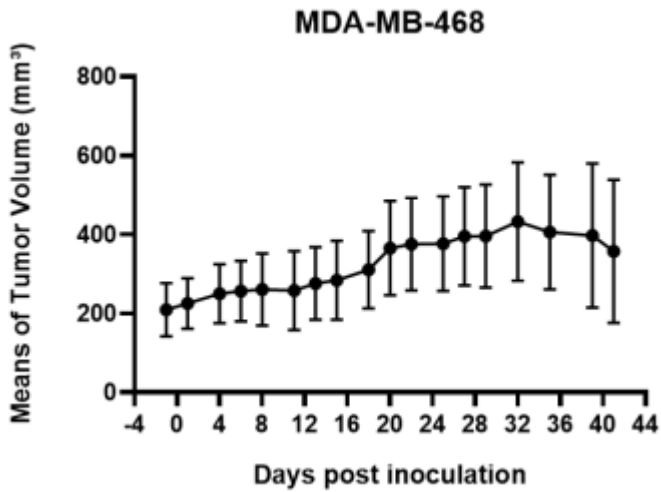
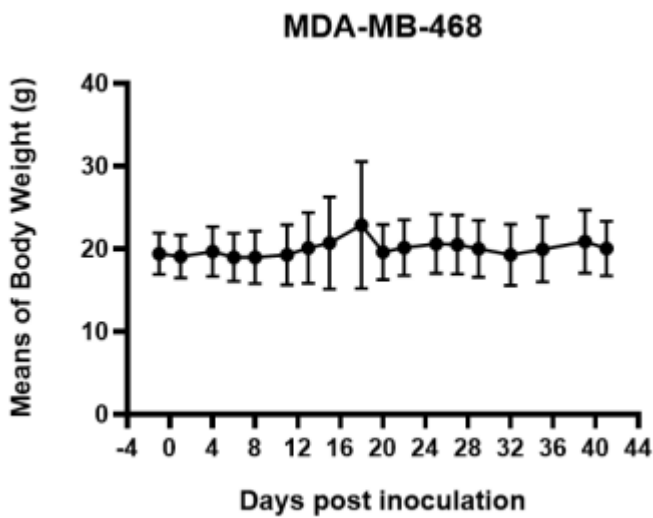


Fig1. Morphology of MDA-MB-468 cell line.



A



B

Fig2. Analysis of Tumorigenesis in Balb/c nude mice (n=6) . A Tumor volume was measured by time. B Body weight was simultaneously checked.

*Wild-type cell lines are not for sale, and only applied to construction of tumor bearing mice and in-vivo efficacy studies.