

Cal 27

Strain Information

SMOC番号	NM-KL01
Cell Line	Cal 27
維持形態	Validation of tumorigenic capacity completed
説明	Cal 27 cells are epithelial cells isolated from tissue taken prior to treatment from a 56-year-old, White male with a lesion in the middle of the tongue in 1982. *Literature published using this strain should indicate: Cal 27 cell line (Cat. NO. NM-KL01) was purchased from Shanghai Model Organisms Center, Inc..

表現型データ

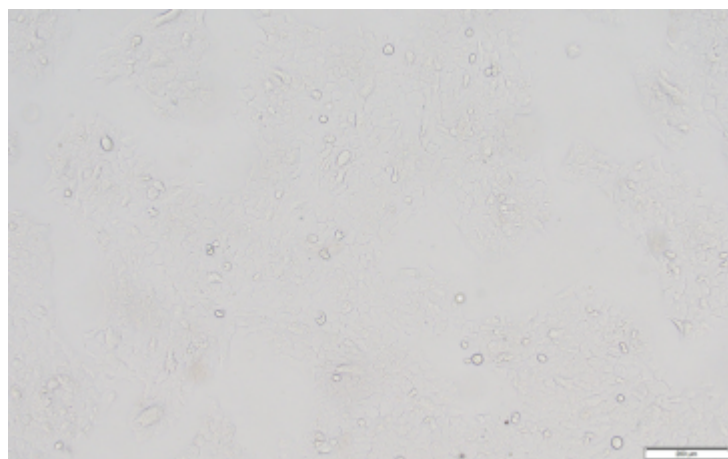
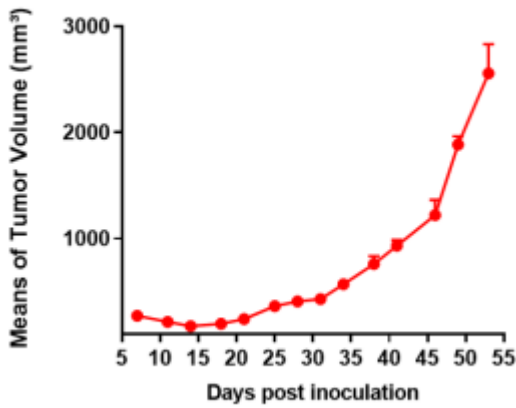


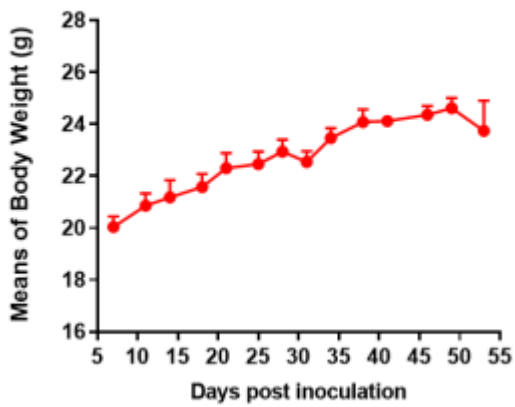
Fig1. Morphology of Cal 27 cell line.

Cal 27



A

Cal 27



B

Fig2. Analysis of Tumorigenesis in M-NSG mice (n=5) . a Tumor volume was measured by time. b Body weight was simultaneously checked.

*Wild-type cell lines are not for sale, and only applied to construction of tumor bearing mice and in-vivo efficacy studies.