

Cd8a-2A-tdTomato-2A-Luc

系統名	C57BL/6Smoc- <i>Cd8a</i> ^{em(T2A-tdTomato-P2A-Luciferase)1Smoc}
SMOC番号	NM-KI-225025
維持形態	Sperm cryopreservation

遺伝子の概要

Gene Symbol Cd8a	Synonyms	Ly-2; Ly-B; Ly-35; Lyt-2; BB154331
	NCBI ID	12525
	MGI ID	88346
	Ensembl ID	ENSMUSG00000053977
	Human Ortholog	CD8A

説明

T2A-tdTomato-P2A-Luciferase expression cassette was knocked into the Cd8a gene .

応用分野: Reporter mouse

*Literature published using this strain should indicate: Cd8a-2A-tdTomato-2A-Luc mice (Cat. NO. NM-KI-225025) were purchased from Shanghai Model Organisms Center, Inc..

表現型データ

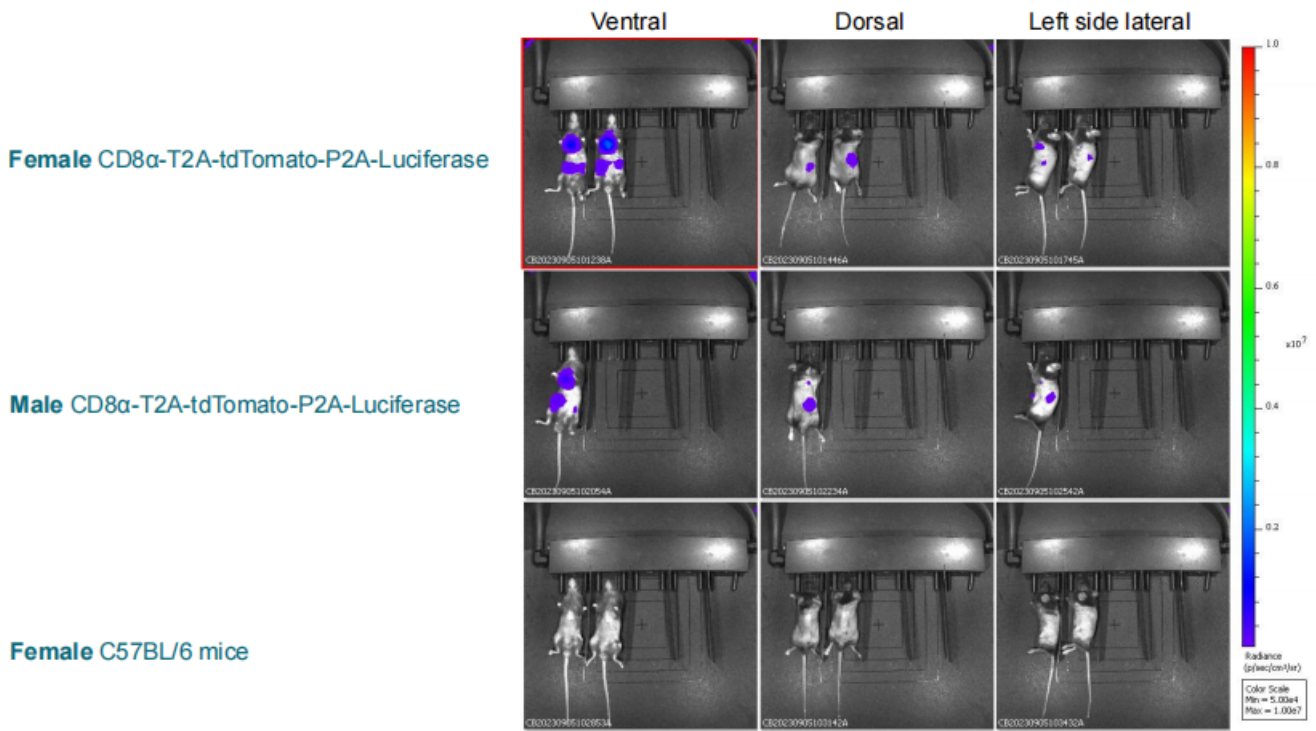


Fig.1 IVIS automatic exposure. According to the imaging process, the mice were injected with D-Luciferin, and the abdomen, back, and flanks were imaged in vivo.

Female CD8α-T2A-tdTomato-P2A-Luciferase

Female C57BL/6 mice

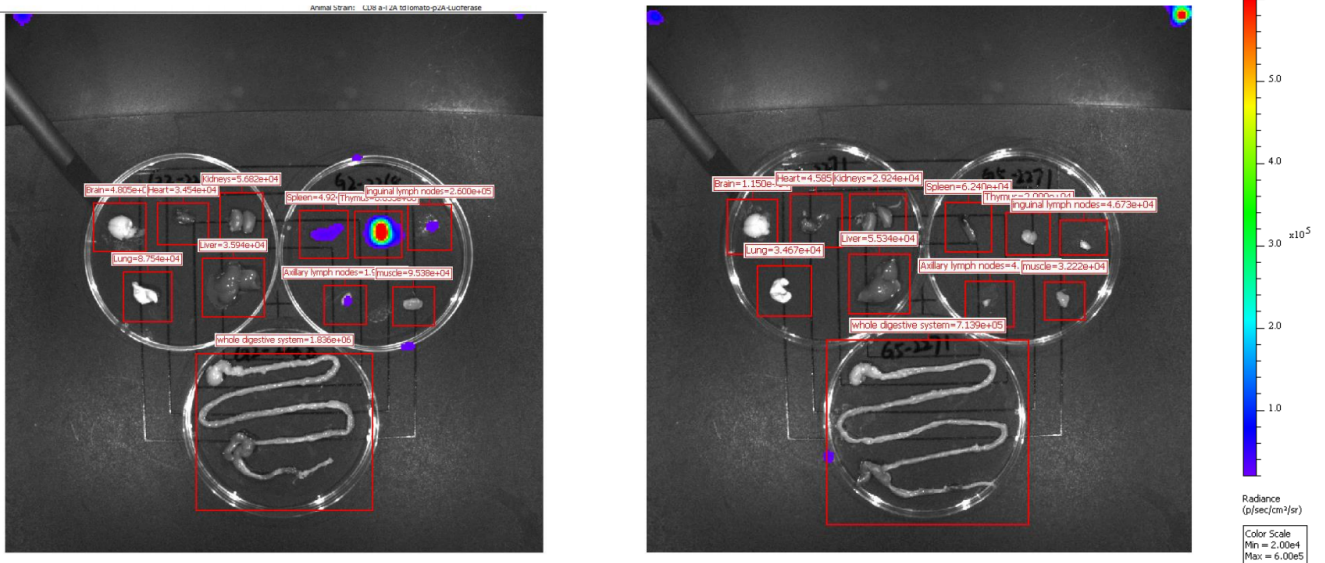


Fig.2 IVIS automatic exposure: ex vivo. According to the imaging process, D-Luciferin was injected, and the mouse brain, heart, lung, kidney, liver, spleen, thymus, inguinal lymph node, axillary lymph node (Axial LN), muscle, and the entire digestive system (stomach to colon) were taken for imaging.

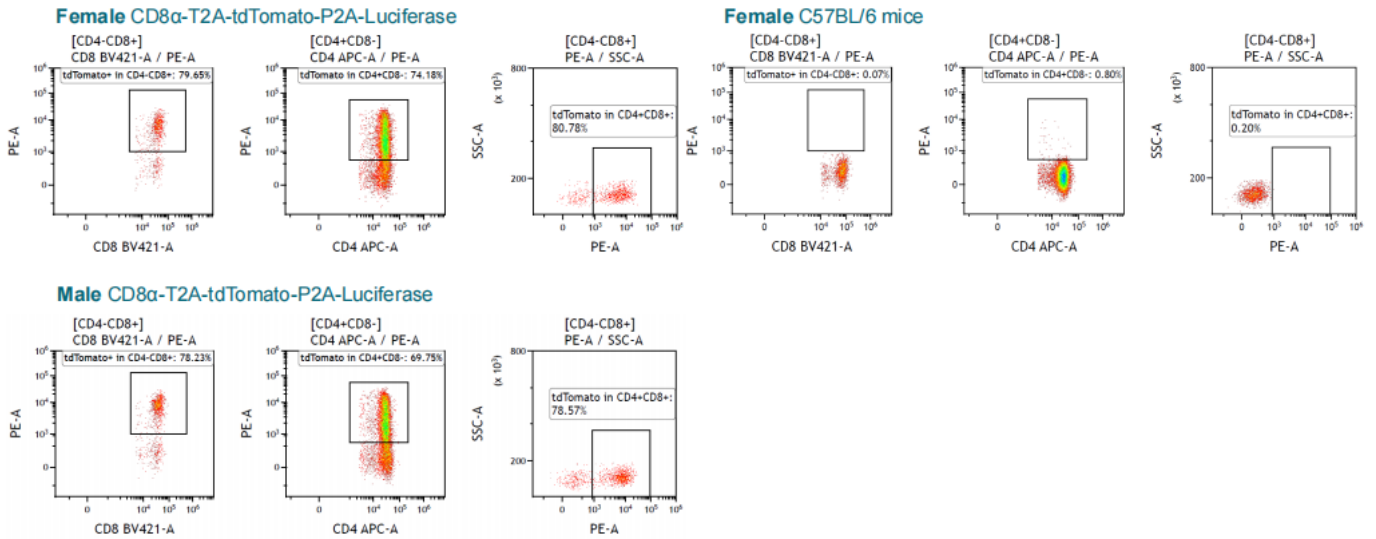


Fig.3 Detection of tdTomato in mice thymus by FACS.

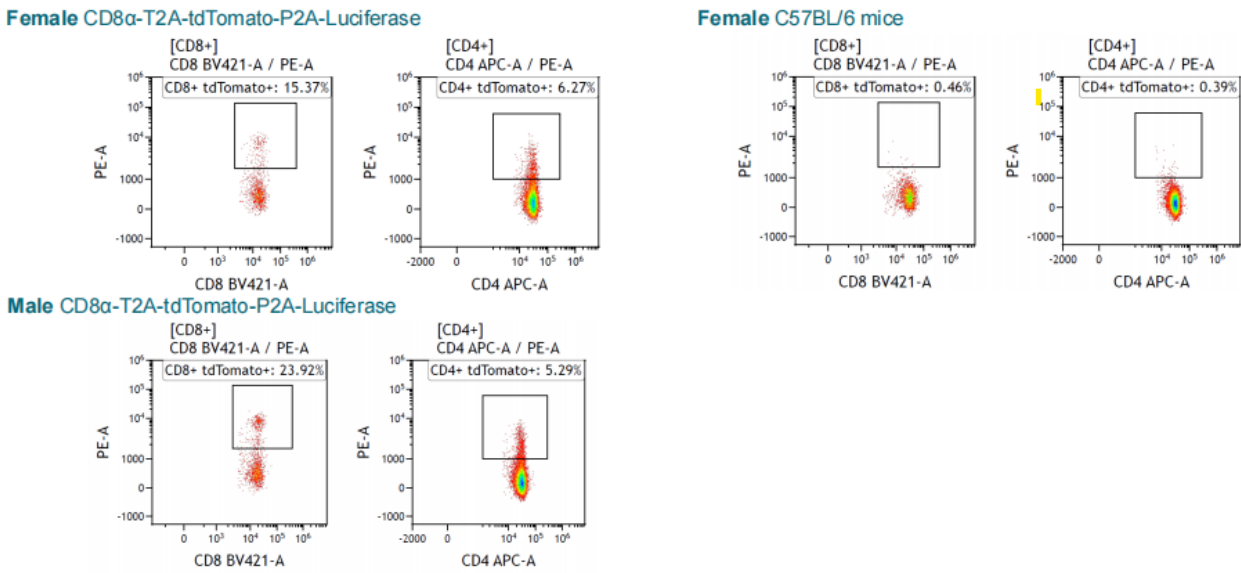


Fig.4 Detection of tdTomato in mice axillary lymph by FACS.

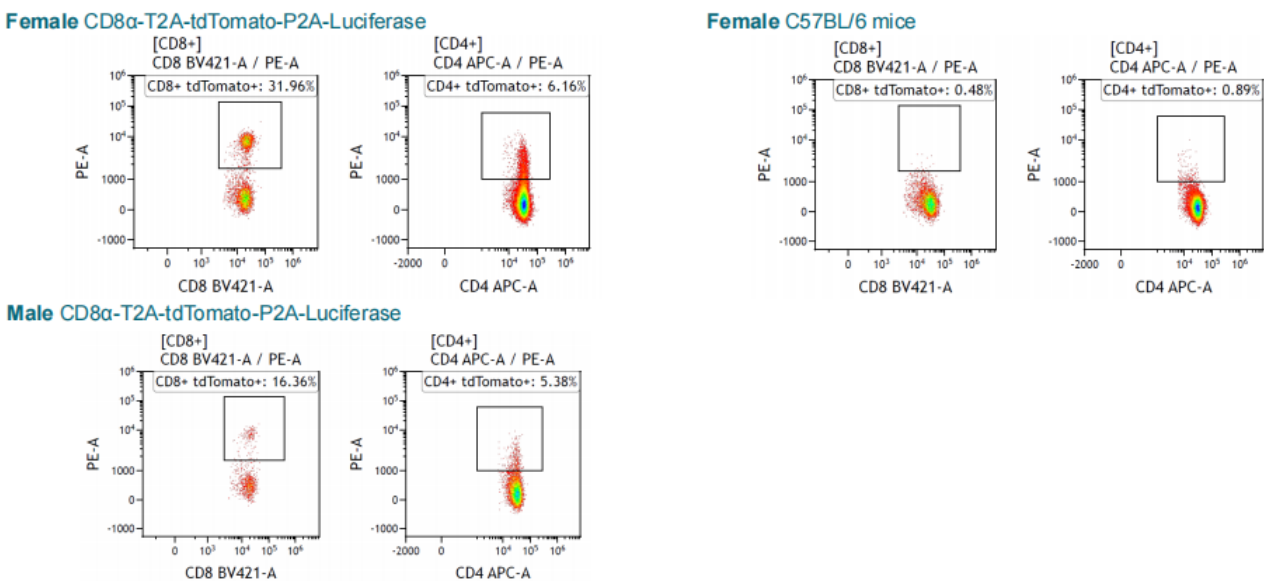
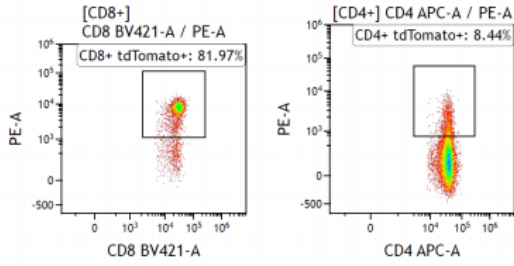
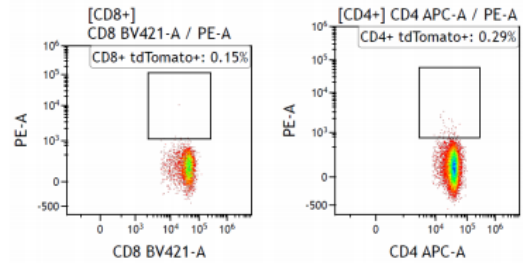


Fig.5 Detection of tdTomato in mice inguinal lymph by FACS.

Female CD8 α -T2A-tdTomato-P2A-Luciferase



Female C57BL/6 mice



Male CD8 α -T2A-tdTomato-P2A-Luciferase

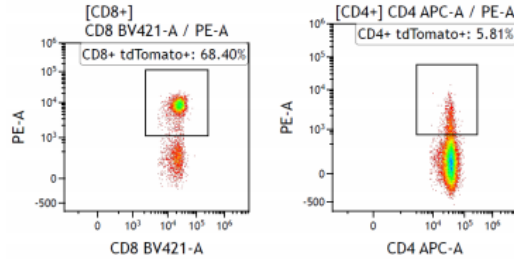
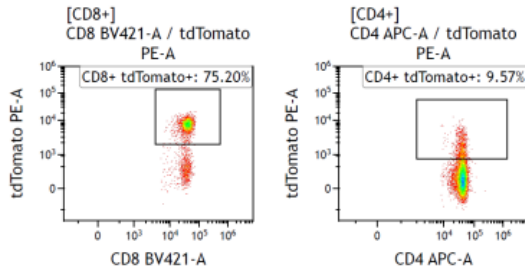
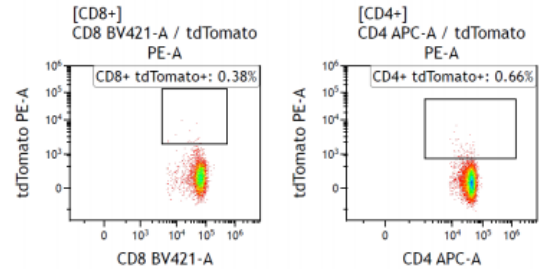


Fig.6 Detection of tdTomato in mice spleen by FACS.

Female CD8 α -T2A-tdTomato-P2A-Luciferase



Female C57BL/6 mice



Male CD8 α -T2A-tdTomato-P2A-Luciferase

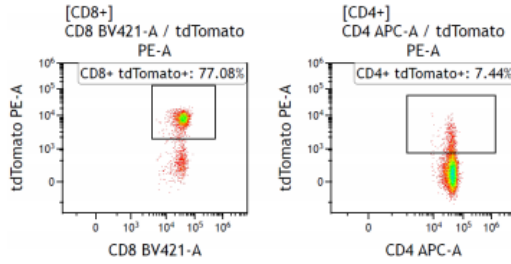


Fig.7 Detection of tdTomato in mice PB by FACS.

**The validation data above were completed in cooperation with Crownbio.*