

Col1a1-IRES-CreERT2

系統名	C57BL/6Smoc- <i>Col1a1</i> ^{em(IRES-CreERT2)1Smoc}
SMOC番号	NM-KI-225031
維持形態	Repository Live

遺伝子の概要

Gene Symbol Col1a1	Synonyms	Cola1; Mov13; Cola-1; Mov-13; Col1a-1
	NCBI ID	12842
	MGI ID	88467
	Ensembl ID	ENSMUSG00000001506
	Human Ortholog	COL1A1

説明

IRES-CreERT2 expression cassette was knocked into the Col1a1 gene .

応用分野: Cre mouse,osteoblast

*Literature published using this strain should indicate: Col1a1-IRES-CreERT2 mice (Cat. NO. NM-KI-225031) were purchased from Shanghai Model Organisms Center, Inc..

表現型データ

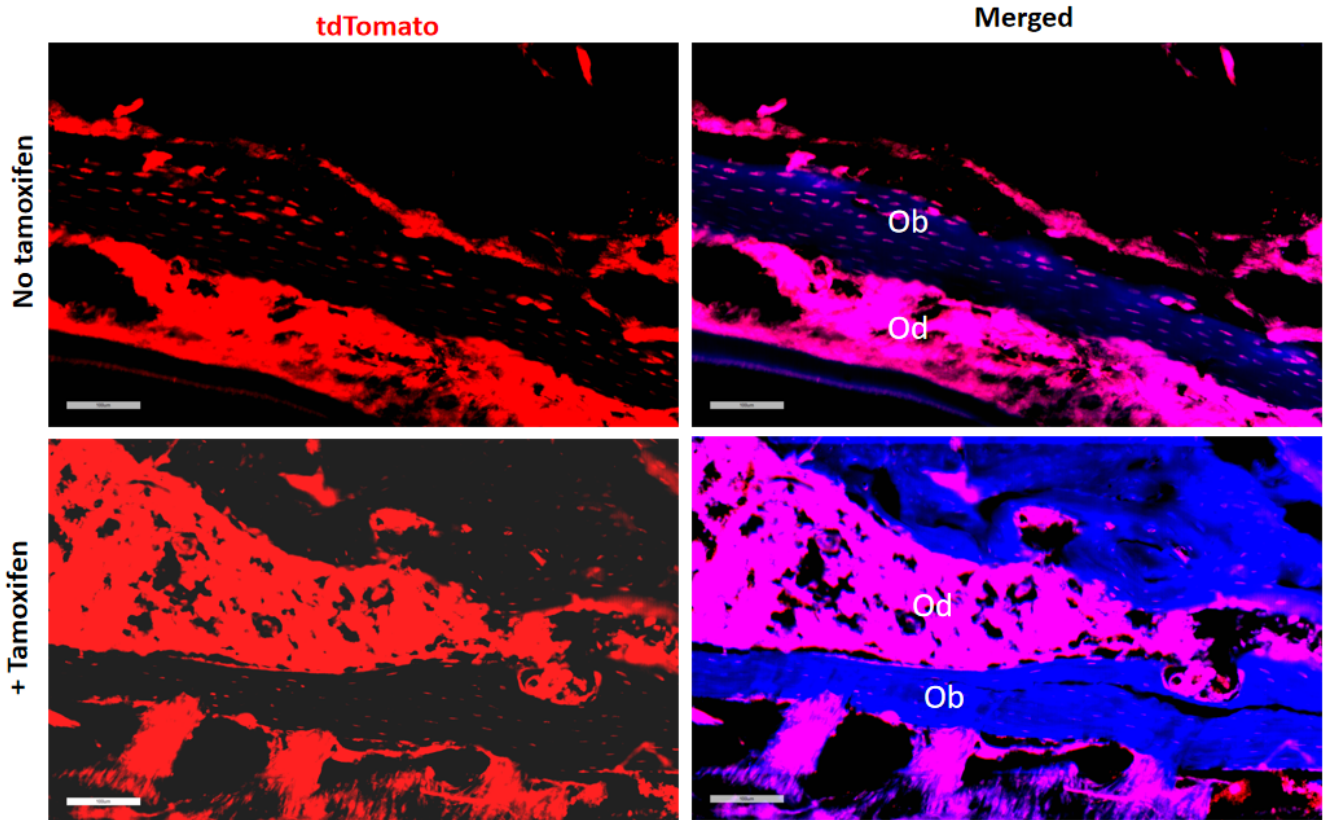


Fig1. Cre mediated recombination in thyroid of Col1a1^{CreERT2/+};Rosa26^{tdTomato/+} mouse.

Ob, osteoblasts; Od, odontoblasts

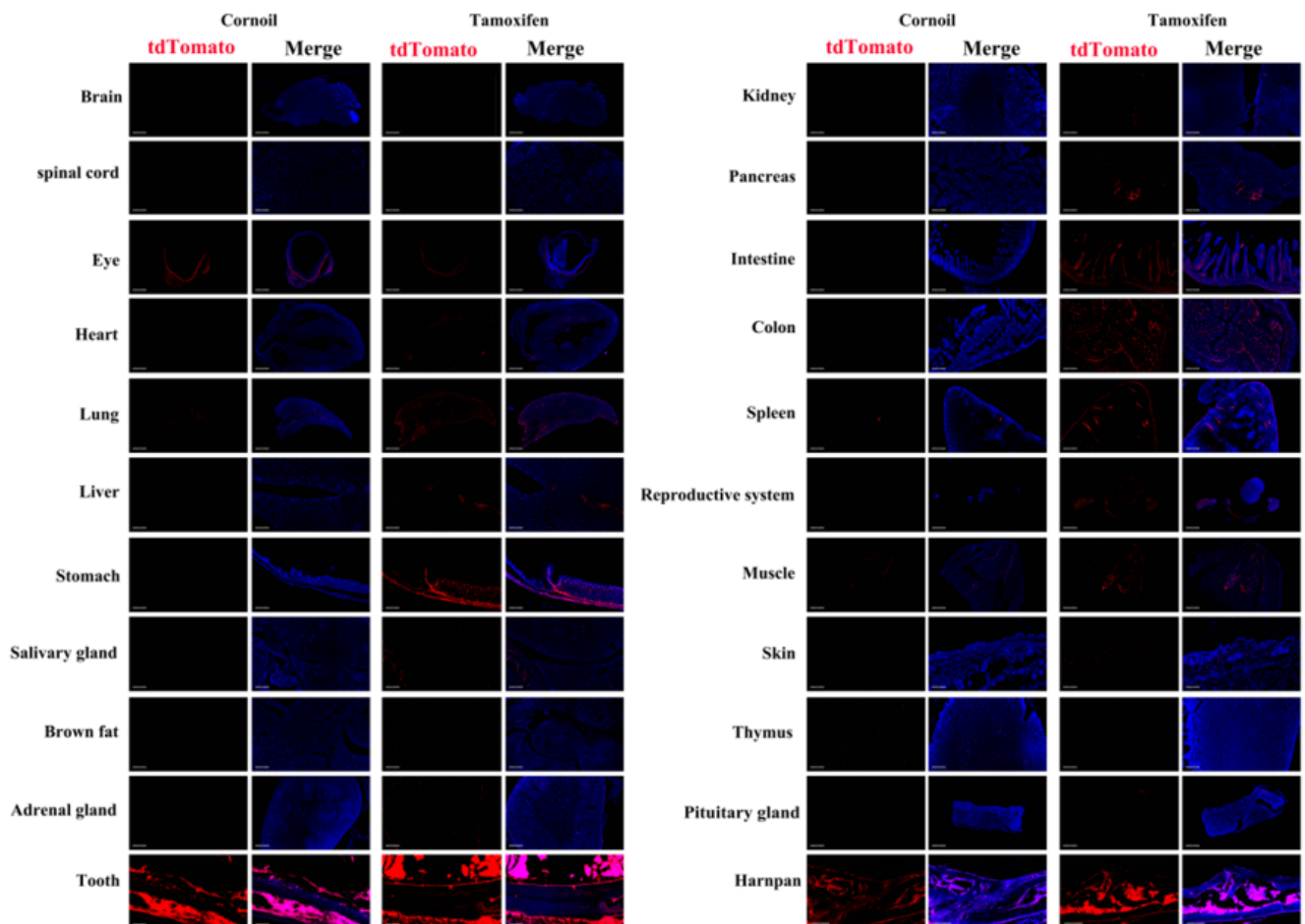


Fig2. Detection of tdTomato(red) in various tissues of Col1a1^{CreERT2/+};Rosa26^{tdTomato/+} mouse. Expression tissues include: lung, stomach, teeth, pancreas, small intestine, colon, spleen, epididymis, skin, pituitary gland and skull. A few cells expressed in brain, eyeball, heart, liver, salivary gland, adrenal gland, kidney, muscle, thymus. Tissues that unexpressed include spinal cord, brown fat. The control group is expressed before induction. (39-days old, male) (For more detailed information please contact our technical advisor.)
