

# Cspg4-CreERT2-2A

系統名	C57BL/6Smoc- <i>Cspg4</i> <sup>em(CreERT2-P2A)1Smoc</sup>
SMOC番号	NM-KI-225033
維持形態	Repository Live

## 遺伝子の概要

Gene Symbol Cspg4	<b>Synonyms</b>	AN2; NG2; 4732461B14Rik
	<b>NCBI ID</b>	<a href="#">121021</a>
	<b>MGI ID</b>	<a href="#">2153093</a>
	<b>Ensembl ID</b>	<a href="#">ENSMUSG00000032911</a>
	<b>Human Ortholog</b>	CSPG4

## 説明

CreERT2-P2A expression cassette was knocked into the Cspg4 gene .

**応用分野:** Cre mouse, Perivascular cell or glial cell

\*Literature published using this strain should indicate: Cspg4-CreERT2-2A mice (Cat. NO. NM-KI-225033) were purchased from Shanghai Model Organisms Center, Inc..

## 表現型データ

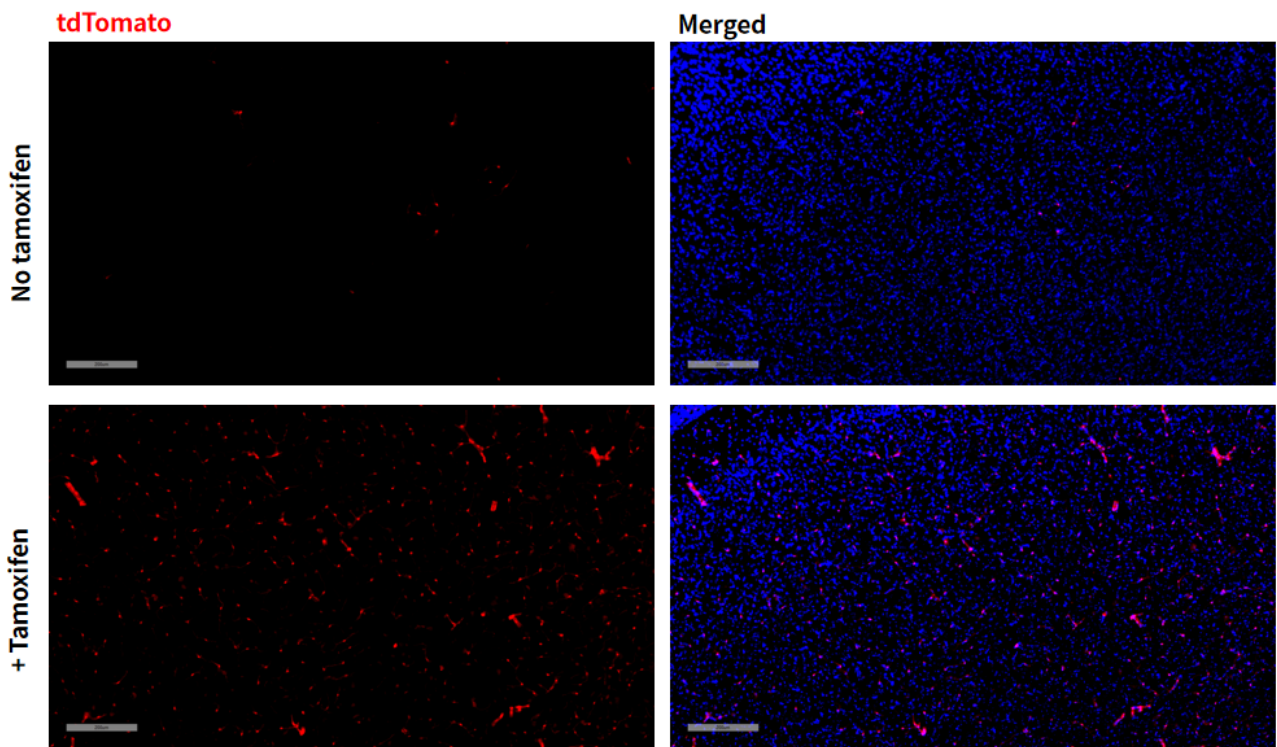


Fig 1. Cre-mediated recombination in Cortex of *Cspg4CreERT2/+; Rosa26tdTomato/+* mice.

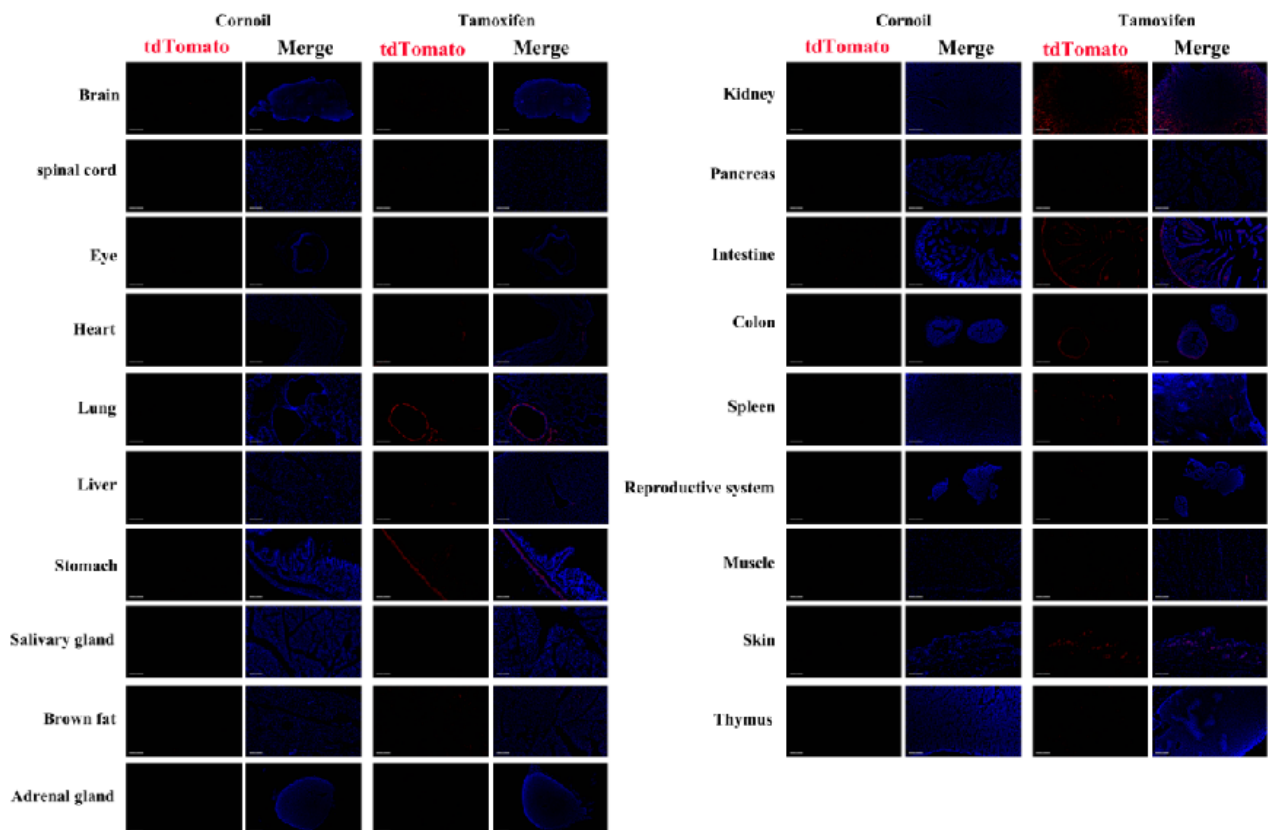


Fig 2. Detection of tdTomato (red) in various tissues of *Cspg4CreERT2/+; Rosa26tdTomato/+* mice. Expression tissues include: brain, spinal cord, cornea, lung, liver, brown

fat, kidney, small intestine, colon, uterus, muscle and skin. A few cells expressed in heart, stomach, adrenal gland, pancreas, spleen, ovary and thymus. Tissues that unexpressed include salivary glands. (5-week old, female) (For more detailed information please contact our technical advisor.)

---