

Cpa3-2A-CreERT2

系統名	C57BL/6Smoc- <i>Cpa3</i> ^{em2(2A-CreERT2-WPRE-polyA)} Smoc
SMOC番号	NM-KI-200005
維持形態	Repository Live

遺伝子の概要

Gene Symbol Cpa3	Synonyms	MC-CPA
	NCBI ID	12873
	MGI ID	88479
	Ensembl ID	ENSMUSG00000001865
	Human Ortholog	CPA3

説明

A 2A-CreERT2-WPRE-polyA expression cassette was knocked into the Cpa3 gene stop codon site.

応用分野: Cre recombinase tool

*Literature published using this strain should indicate: Cpa3-2A-CreERT2 mice (Cat. NO. NM-KI-200005) were purchased from Shanghai Model Organisms Center, Inc..

表現型データ

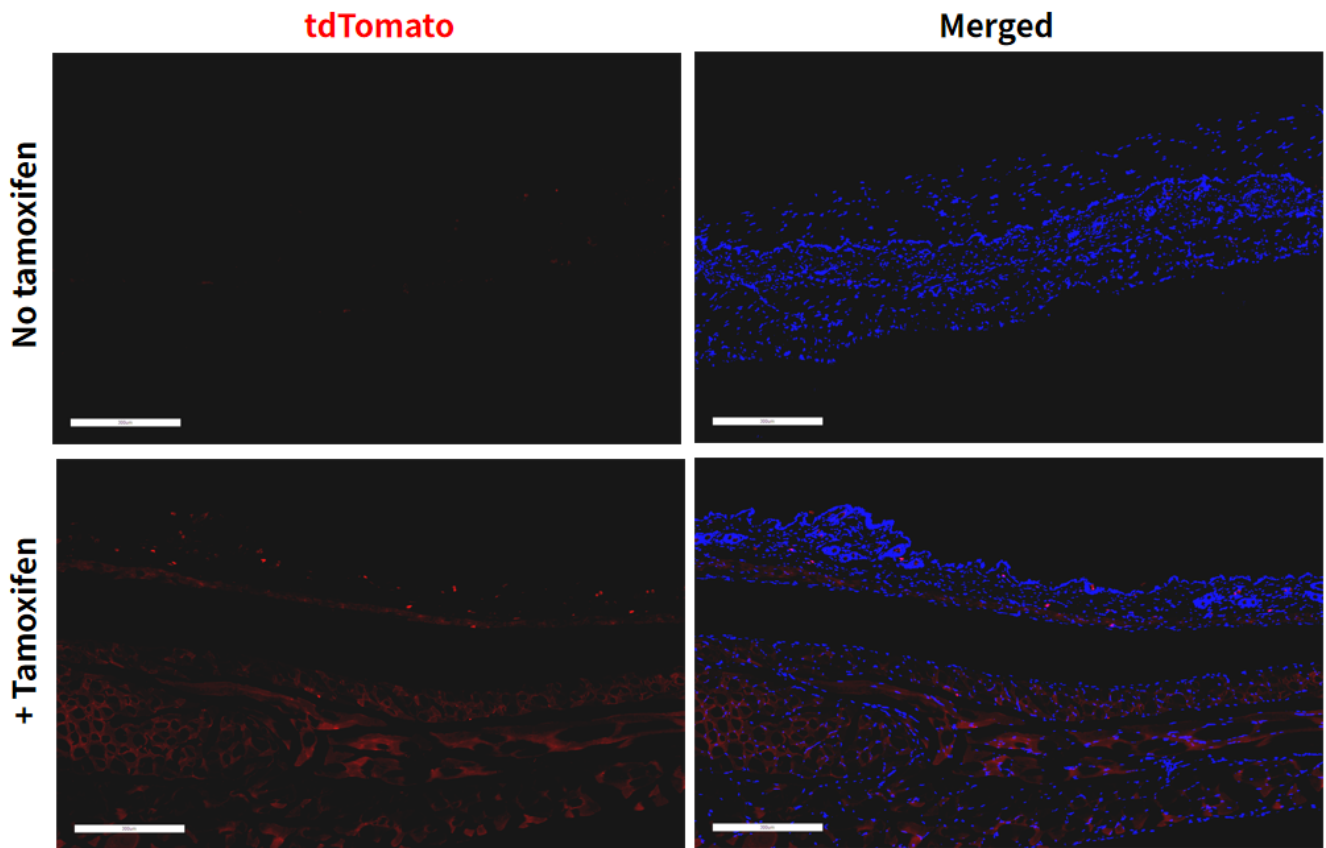


Fig1. Cre mediated recombination in skin of $Cpa3^{CreERT2/+};Rosa26^{tdTomato/+}$ mouse.

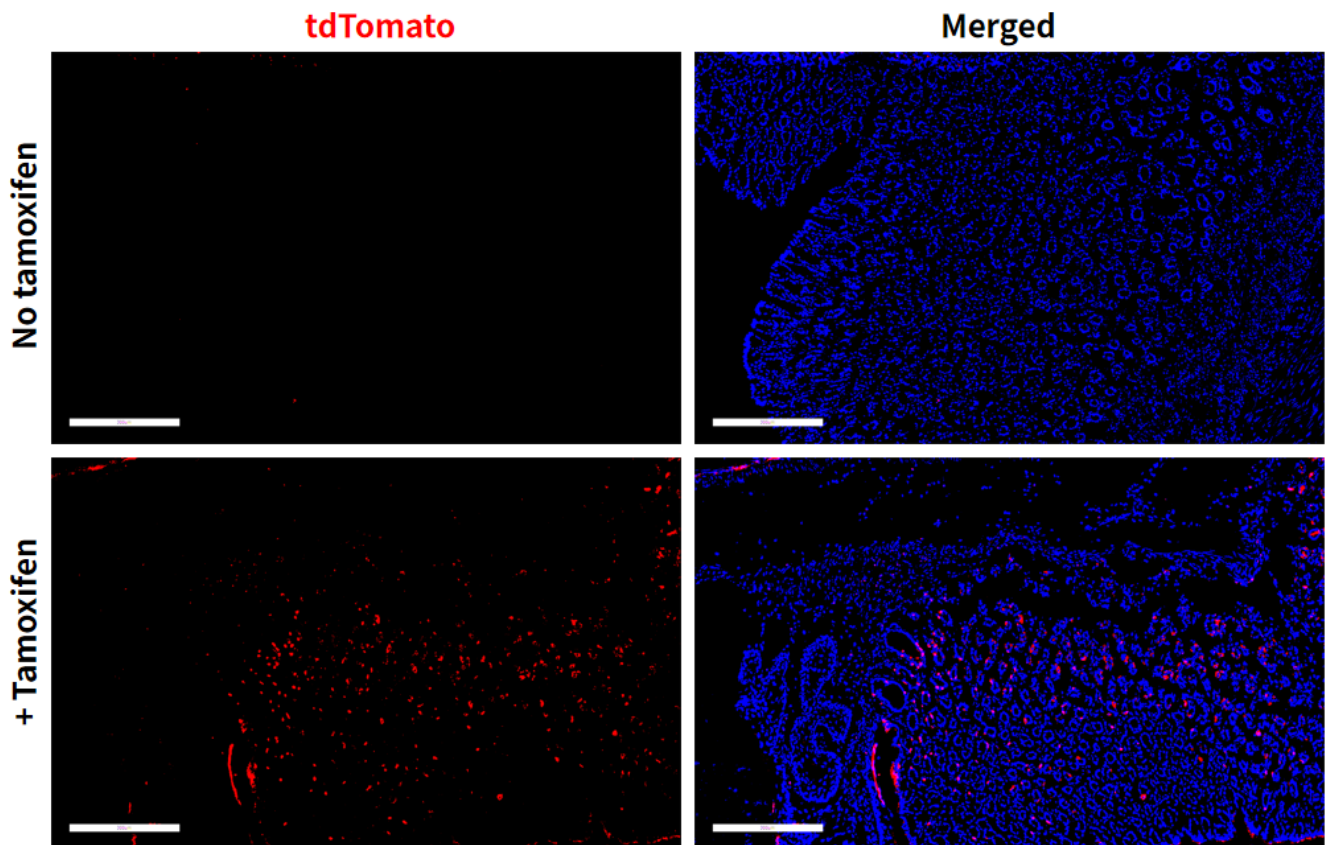


Fig2. Cre mediated recombination in stomach of $Cpa3^{CreERT2/+};Rosa26^{tdTomato/+}$ mouse.

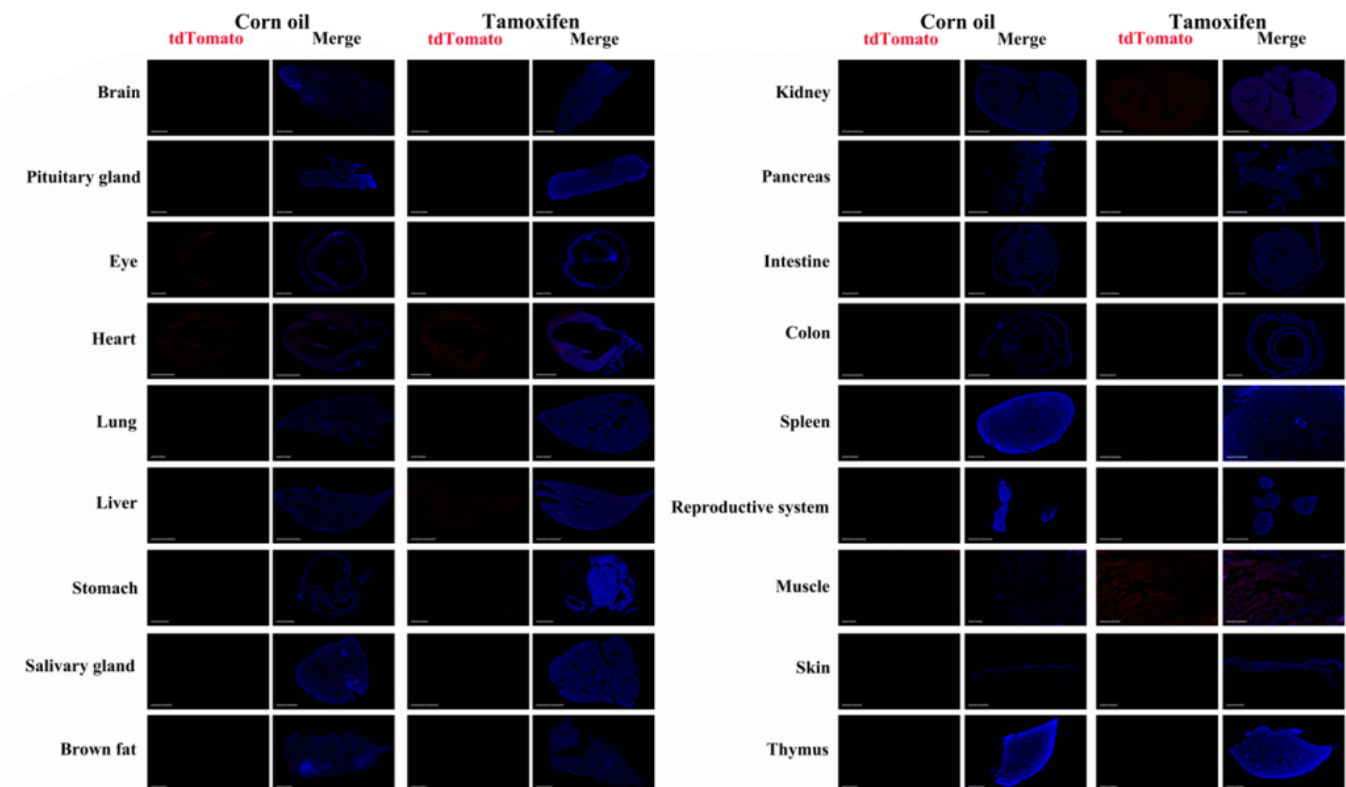


Fig3. Detection of tdTomato(red) in various tissues of $Cpa3^{CreERT2/+};Rosa26^{tdTomato/+}$ mouse. Expression tissues include: salivary gland, lung, ovaries and uterus. No obvious positive signals were observed in the brain, pituitary gland, retina, heart, lungs, liver, brown fat, muscles, kidneys, pancreas, small intestine, large intestine, spleen and thymus.(61-days old, female) (For more detailed information please contact our technical advisor.)