

Mnx1-IRES-Cre

系統名	C57BL/6Smoc- <i>Mnx1</i> ^{em1(IRES-Cre-WPRE-polyA)Smoc}
SMOC番号	NM-KI-200010
維持形態	Embryo cryopreservation

遺伝子の概要

Gene Symbol Mnx1	Synonyms	HB9; MNR2; Hlxb9
	NCBI ID	15285
	MGI ID	109160
	Ensembl ID	ENSMUSG00000001566
	Human Ortholog	MNX1

説明

A IRES-Cre-WPRE-polyA expression cassette was knocked into the Mnx1 gene stop codon site. When crossed with a strain carrying a gene flanked by loxP sites, the flanked gene will be removed in cells expressing Mnx1. These mice may be useful for studying spinal muscular atrophy (SMA).

応用分野: Cre recombinase tool

*Literature published using this strain should indicate: Mnx1-IRES-Cre mice (Cat. NO. NM-KI-200010) were purchased from Shanghai Model Organisms Center, Inc..

表現型データ

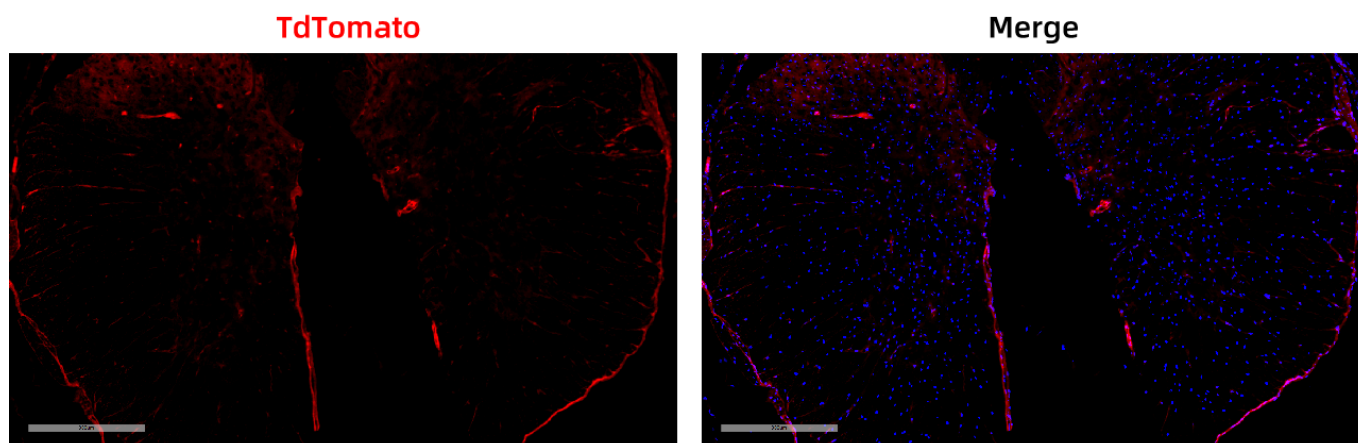


Fig. 1 Cre-mediated recombination in the spinal cord of $Mnx1^{Cre/+}; Rosa26^{tdTomato/+}$ mouse. TdTomato(red) expression can be detected in the spinal cord of $Mnx1^{Cre/+}; Rosa26^{tdTomato/+}$ mouse.

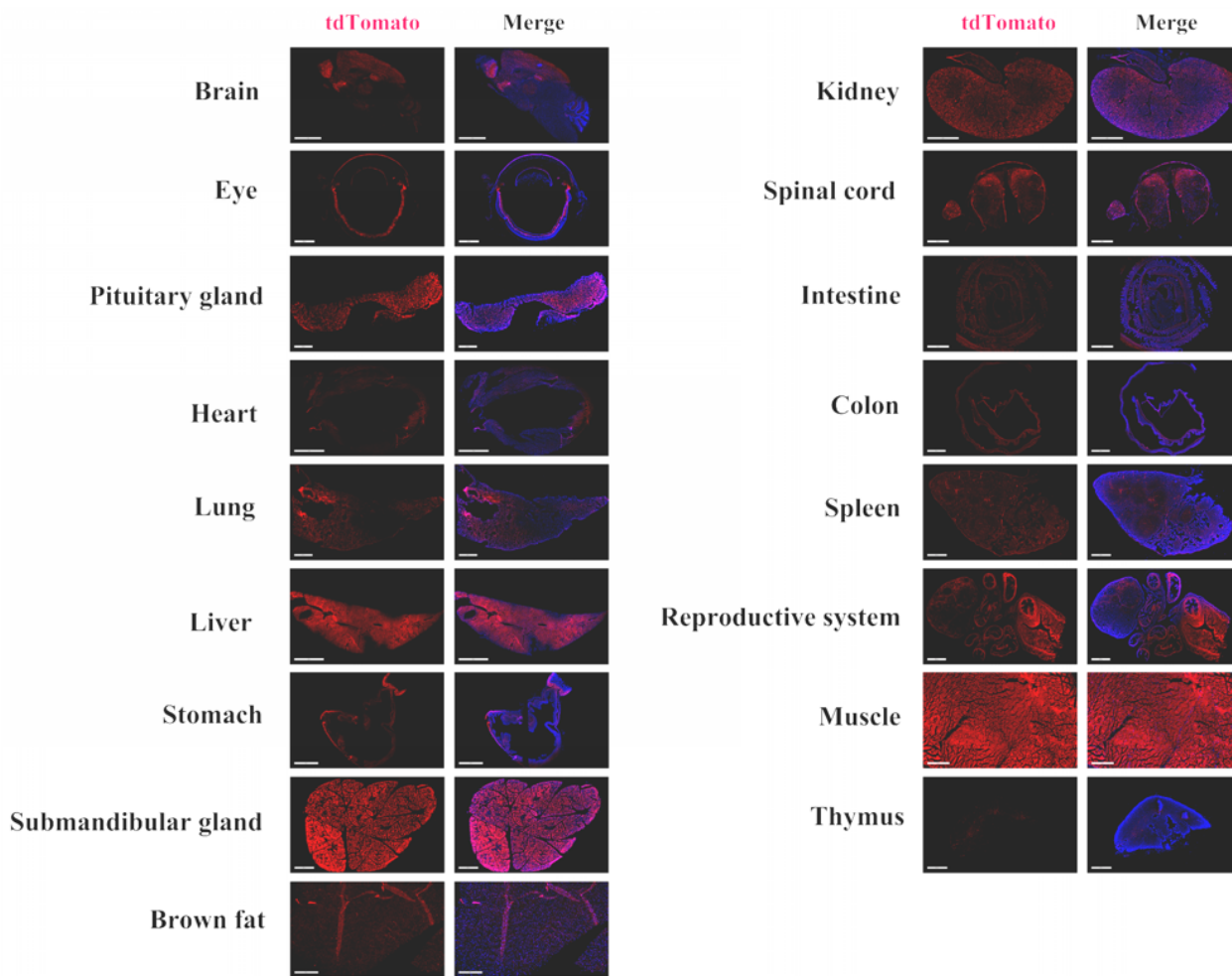


Fig. 2 Detection of tdTomato(red) in various tissues of $Mnx1^{Cre/+}; Rosa26^{tdTomato/+}$ mice. Tdtomato expression can be detected in the brain, kidney, intestine, colon, eyes, ovary, salivary gland, stomach, liver, skin, heart, lung, pituitary gland, muscle, spleen, brown fat and thymus. (For more detailed information please contact our technical advisor.)