

Eno2-2A-CreERT2

系統名	C57BL/6Smoc- <i>Eno2</i> ^{em1(2A-CreERT2)Smoc}
SMOC番号	NM-KI-200011
維持形態	Sperm cryopreservation

遺伝子の概要

Gene Symbol Eno2	Synonyms	NSE; Eno-2; AI837106; D6Ertd375e
	NCBI ID	13807
	MGI ID	95394
	Ensembl ID	ENSMUSG00000004267
	Human Ortholog	ENO2

説明

A 2A-CreERT2 expression cassette was knocked into the *Eno2* gene stop codon site.

応用分野: *Eno2-2A-CreERT2* mice express the tamoxifen inducible creERT2 in the nervous system. CreERT2 mediated recombination can also be detected in the muscle.

*Literature published using this strain should indicate: *Eno2-2A-CreERT2* mice (Cat. NO. NM-KI-200011) were purchased from Shanghai Model Organisms Center, Inc..

表現型データ

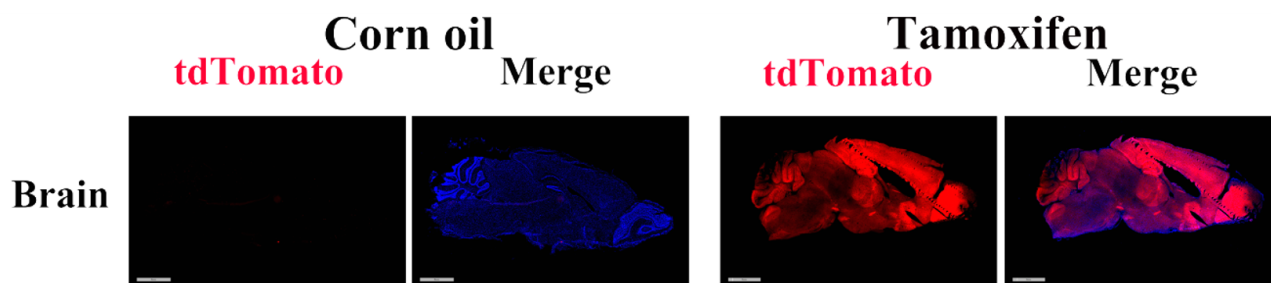


Fig. 1 CreERT2-mediated recombination in the brain of *Eno2*^{CreERT2/+}; *Rosa26*^{tdTomato/+} mouse.

Detection of tdTomato (red) in the brain of *Eno2*^{CreERT2/+}; *Rosa26*^{tdTomato/+} mouse after tamoxifen treatment.

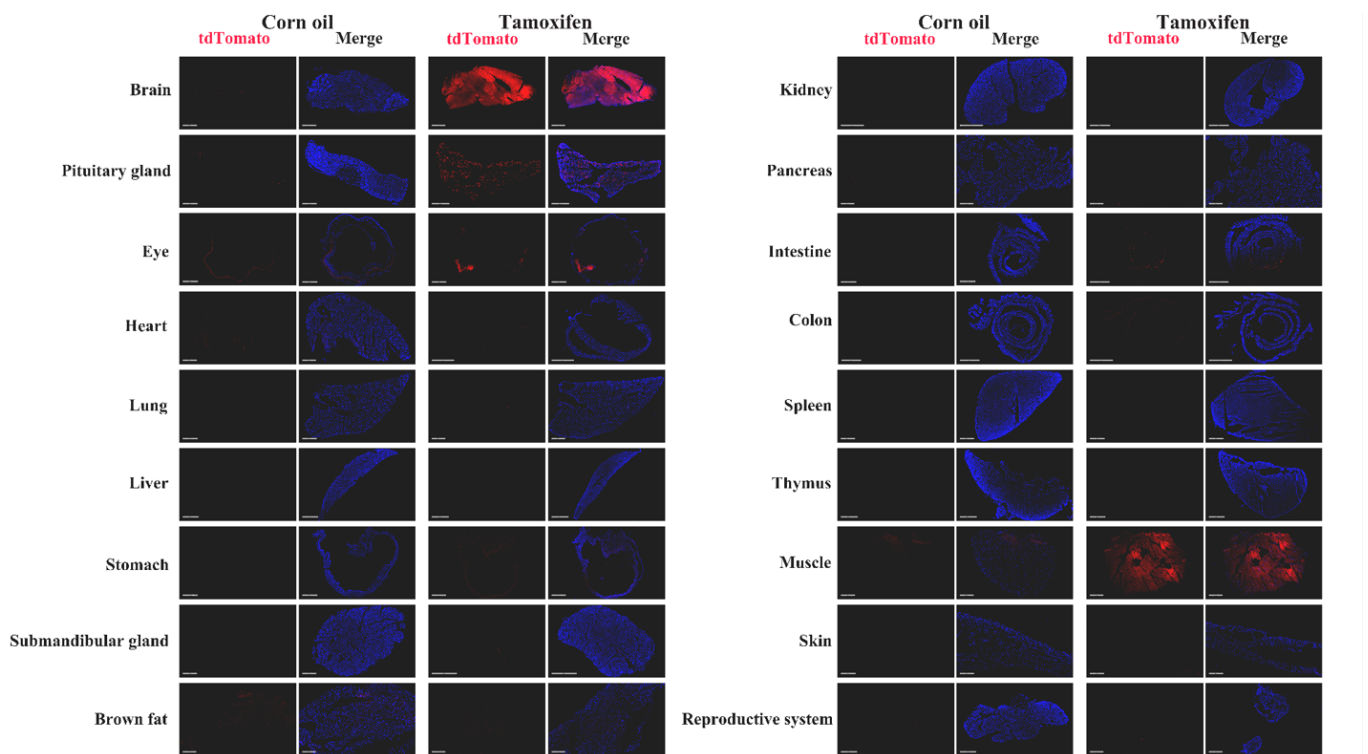


Fig. 2: Detection of tdTomato in various tissues of $Eno2^{CreERT2/+}; Rosa26^{tdTomato/+}$ mice. CreERT2 mediated recombination can be detected in the brain. Some leakiness were detected in the muscle. (For more detailed information please contact our technical advisor.)