

MC38-hSIGLEC15 (2)

Strain Information

SMOC番号	NM-S13-TM88
Cell Line	MC38-Tg(hSIGLEC15)Smoc
維持形態	Validation of pharmacodynamic assays completed
説明	SIGLEC15 gene humanized mouse colon adenocarcinoma cell. *Literature published using this strain should indicate: MC38-hSIGLEC15 (2) cell line (Cat. NO. NM-S13-TM88) was purchased from Shanghai Model Organisms Center, Inc..

表現型データ

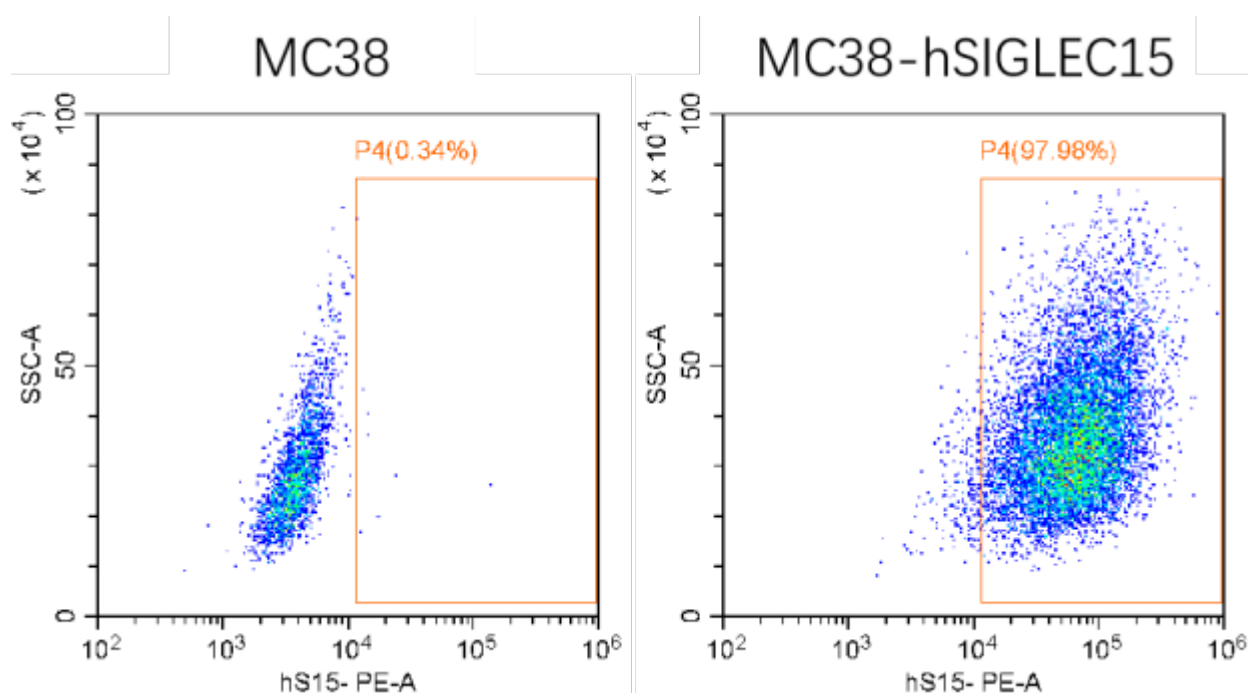


Figure 1. hSIGLEC15 expression in MC38-hSIGLEC15 cell line

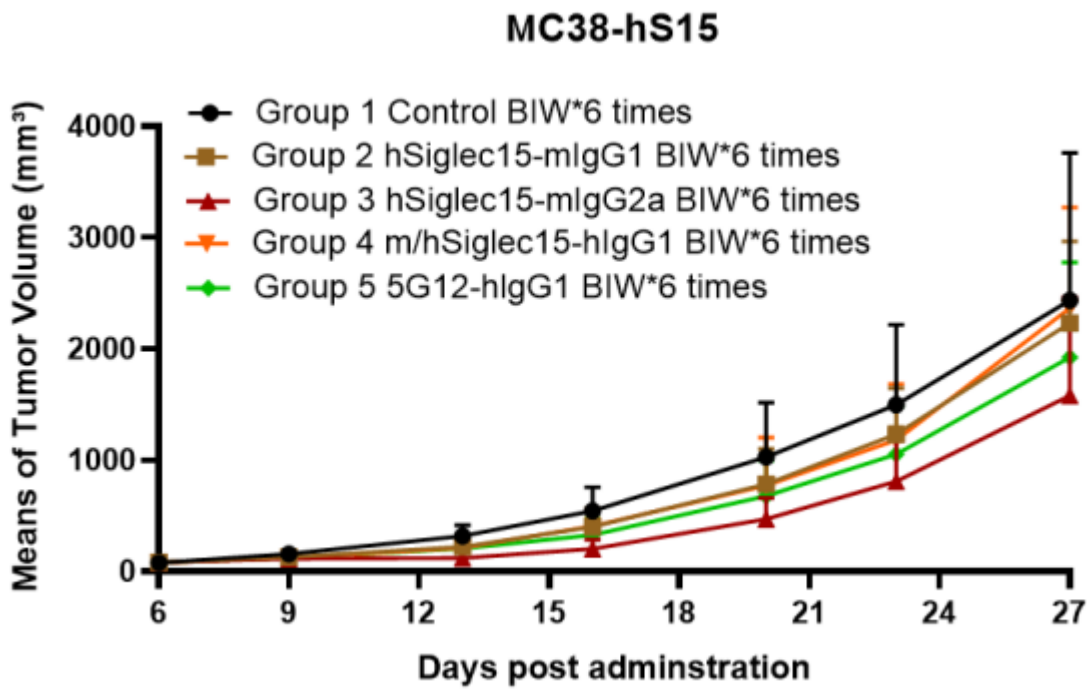


Figure 2. Tumor growth curve of MC38-hSIGLEC15 syngeneic model (n=6)

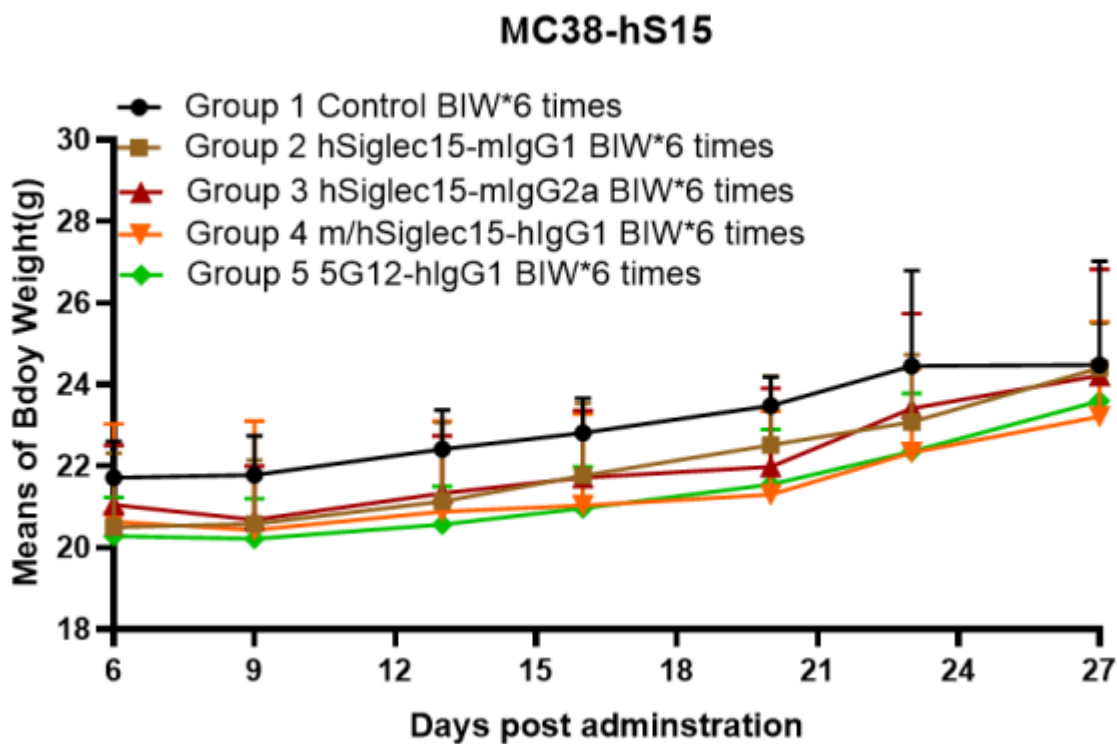


Figure 3. Body weight change of MC38-hSIGLEC15 syngeneic model (n=6)

MC38-hSIGLEC15

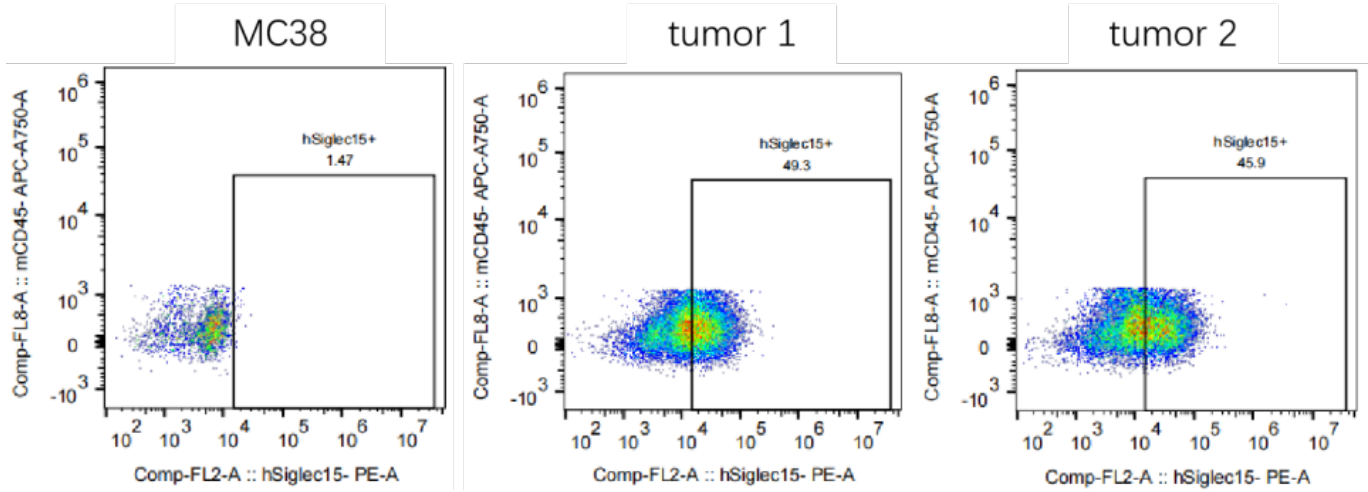


Figure 4. The expression of hSIGLEC15 in humanized modified tumors by FACS