

S100a4-2A-CreERT2

系統名	C57BL/6Smoc- <i>S100a4</i> ^{em1(2A-CreERT2-WPRE-polyA)} Smoc
SMOC番号	NM-KI-200024
維持形態	Sperm cryopreservation

遺伝子の概要

Gene Symbol	Synonyms	42a, 18A2, Capl, FSp1, Mts1, pk9a, PeL98, metastasin
	NCBI ID	20198
	MGI ID	1330282
	Ensembl ID	ENSMUSG00000001020
	Human Ortholog	S100A4

説明

A 2A-CreERT2-WPRE-polyA expression cassette was knocked into the S100a4 gene stop codon site.

応用分野: Cre recombinase tool

*Literature published using this strain should indicate: S100a4-2A-CreERT2 mice (Cat. NO. NM-KI-200024) were purchased from Shanghai Model Organisms Center, Inc..

表現型データ

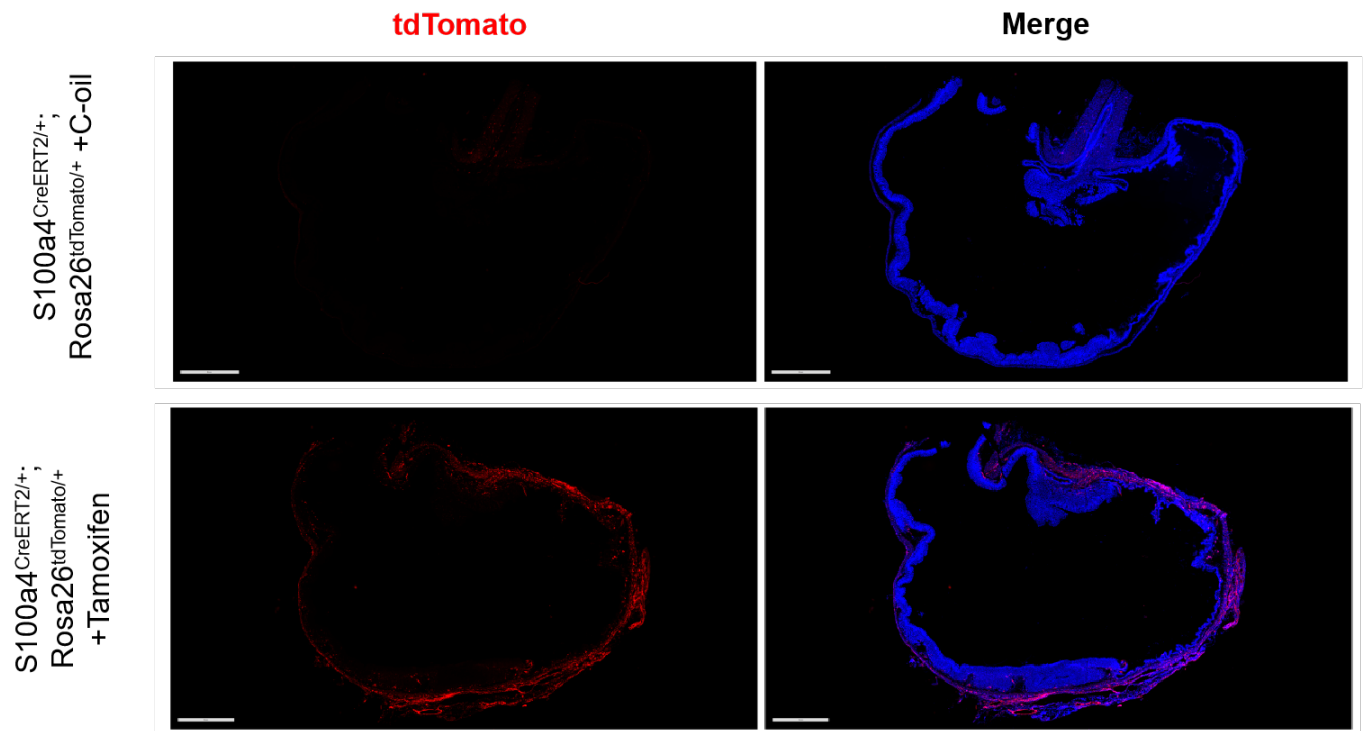


Figure 1: CreERT2-mediated recombination in the stomach of S100a4CreERT2^{+/+}; Rosa26tdTomato^{+/+} mice. Detection of tdTomato (red) in fibroblasts of S100a4CreERT2^{+/+}; Rosa26tdTomato^{+/+} mice after tamoxifen treatment.

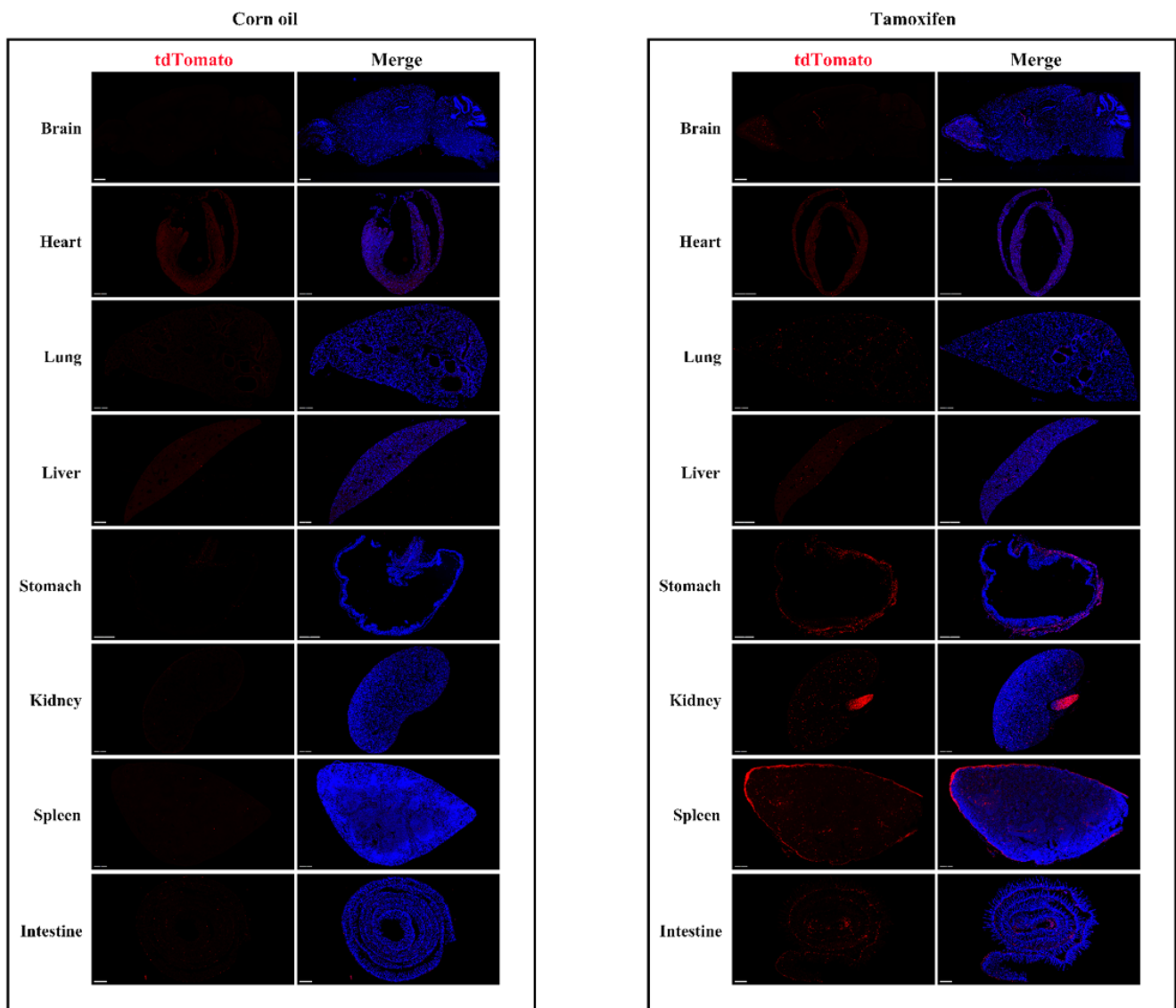


Figure 2: Detection of tdTomato (red) in various tissues of S100a4CreERT2/+; Rosa26tdTomato/+ mice after tamoxifen treatment.