

# Lyz2-IRES-mtagBFP2-Luc

系統名	C57BL/6Smoc-Lyz2 <sup>em4(IRES-mtagBFP-Luci)Smoc</sup>
SMOC番号	NM-KI-200029
維持形態	Sperm cryopreservation

## 遺伝子の概要

Gene Symbol Lyz2	<b>Synonyms</b>	Lys; Lzm; Lzp; Lysm; Lyzs; Lyzf2; Lzm-s1; AI326280
	<b>NCBI ID</b>	<a href="#">17105</a>
	<b>MGI ID</b>	<a href="#">96897</a>
	<b>Ensembl ID</b>	<a href="#">ENSMUSG00000069516</a>
	<b>Human Ortholog</b>	LYZ2

## 説明

A IRES-mtagBFP-luci expression cassette was knocked into the Lyz2 gene stop codon site.

**応用分野:** Monocyte macrophage reporter

\*Literature published using this strain should indicate: Lyz2-IRES-mtagBFP2-Luc mice (Cat. NO. NM-KI-200029) were purchased from Shanghai Model Organisms Center, Inc..

## 表現型データ

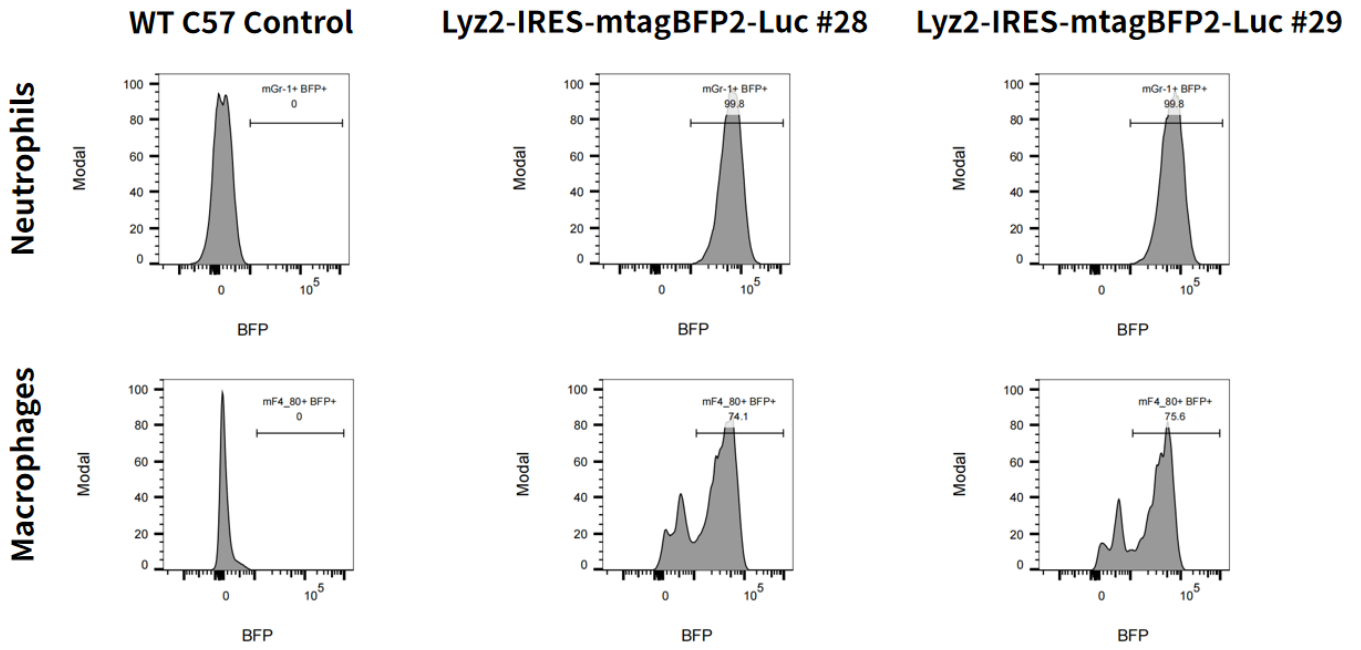


Fig.1 Detection of BFP expression on Macrophages and Neutrophils in BM in Lyz2-IRES-mtagBFP2-Luc mice.

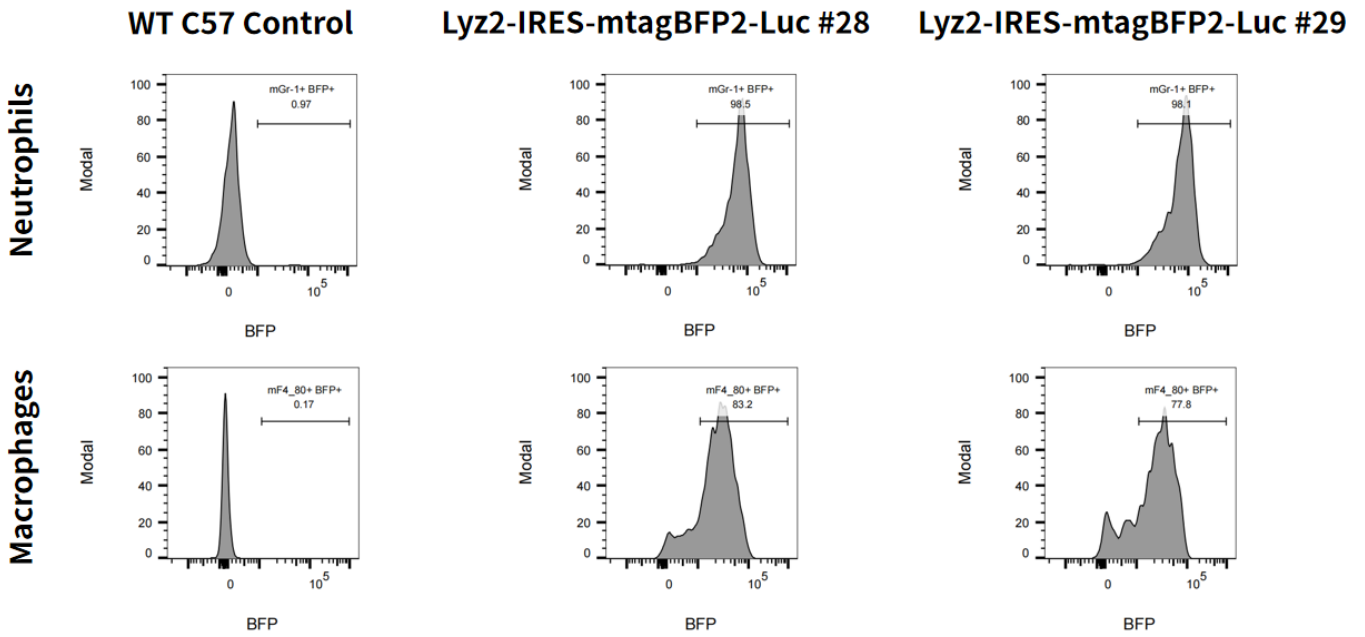


Fig.2 Detection of BFP expression on Macrophages and Neutrophils in Blood in Lyz2-IRES-mtagBFP2-Luc mice.

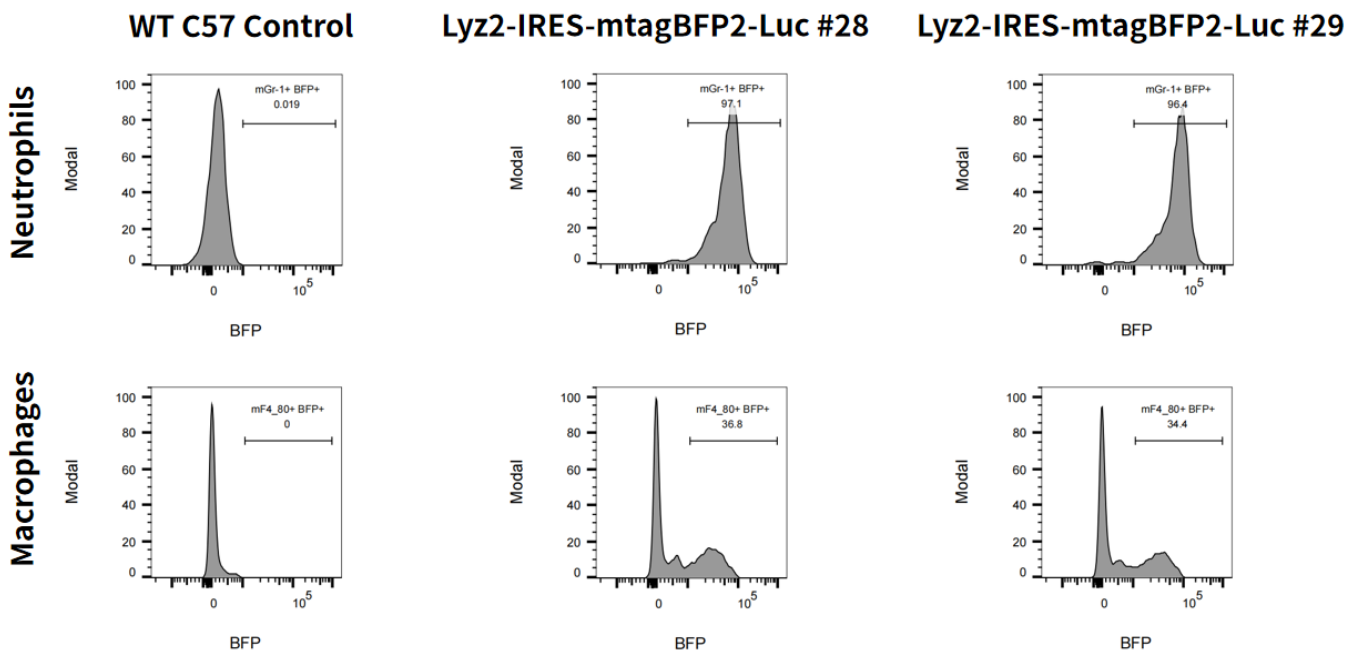


Fig.3 Detection of BFP expression on Macrophages and Neutrophils in Spleen in Lyz2-IRES-mtagBFP2-Luc mice.