

# Gla-KO

系統名	C57BL/6Smoc- <i>Gla</i> <sup>em1Smoc</sup>
SMOC番号	NM-KO-200601
維持形態	Repository Live

## 遺伝子の概要

Gene Symbol Gla	Synonyms	Ags
	NCBI ID	<a href="#">11605</a>
	MGI ID	<a href="#">1347344</a>
	Ensembl ID	<a href="#">ENSMUSG00000031266</a>
	Human Ortholog	GLA

## 説明

Exon 2-3 of Gla gene was deleted to generate Gla knockout mice.

**応用分野:** Fabry Disease research

\*Literature published using this strain should indicate: Gla-KO mice (Cat. NO. NM-KO-200601) were purchased from Shanghai Model Organisms Center, Inc..

## 病気の予測

Fabry Disease	表現型	<a href="#">MGI:2183938</a>
	参考文献	Ohshima T, Murray GJ, Swaim WD, Longenecker G, Quirk JM, Cardarelli CO, Sugimoto Y, Pastan I, Gottesman MM, Brady RO, Kulkarni AB, alpha-Galactosidase A deficient mice: a model of Fabry disease. Proc Natl Acad Sci U S A. 1997 Mar 18;94(6):2540-4

## 表現型データ

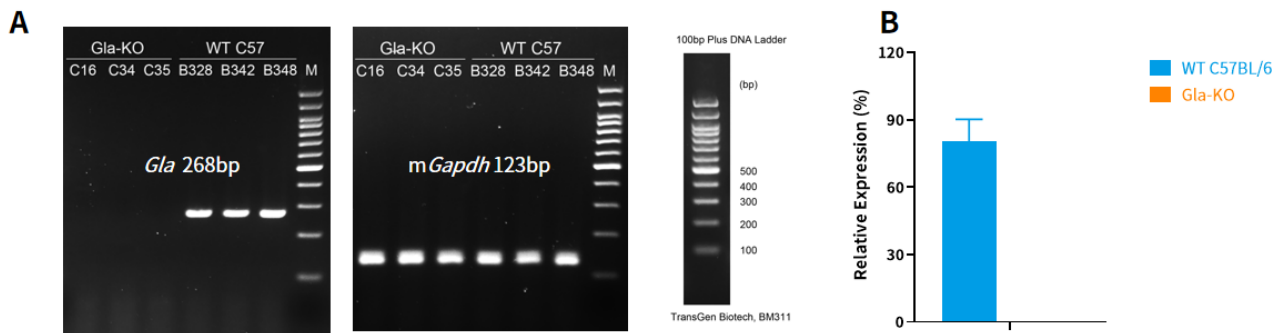


Fig1. Detection of *Gla* expression in brain by RT-PCR (A) and qPCR (B).

Wild type: only one band at 268 bp with primers F1/R1(m*Gla*).

Abbr. M, DNA marker; WT, wild type.

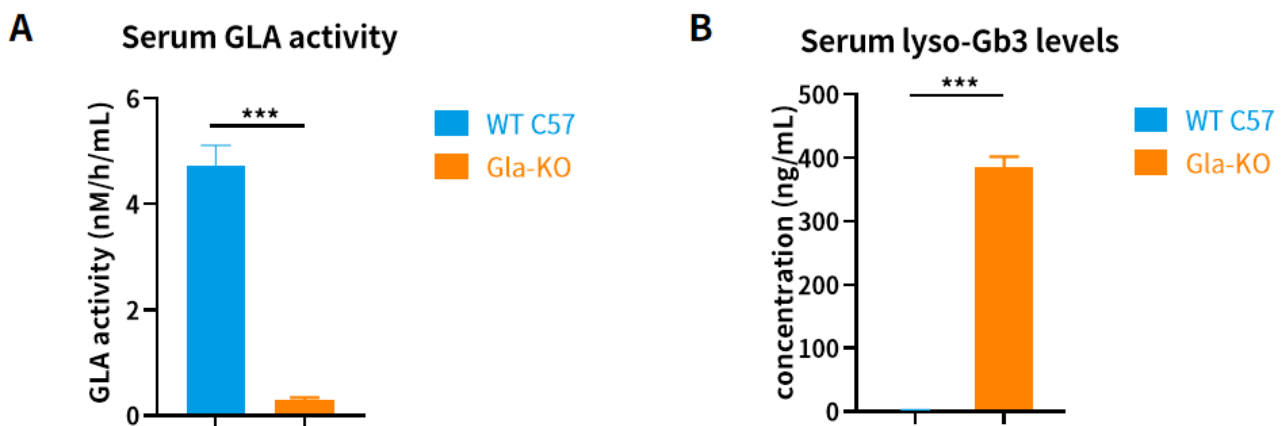


Fig2. Detection of serum GLA activity (A) and serum lyso-Gb3 levels (B) in 14 weeks old male Gla-KO mice. (Data from the collaborator)

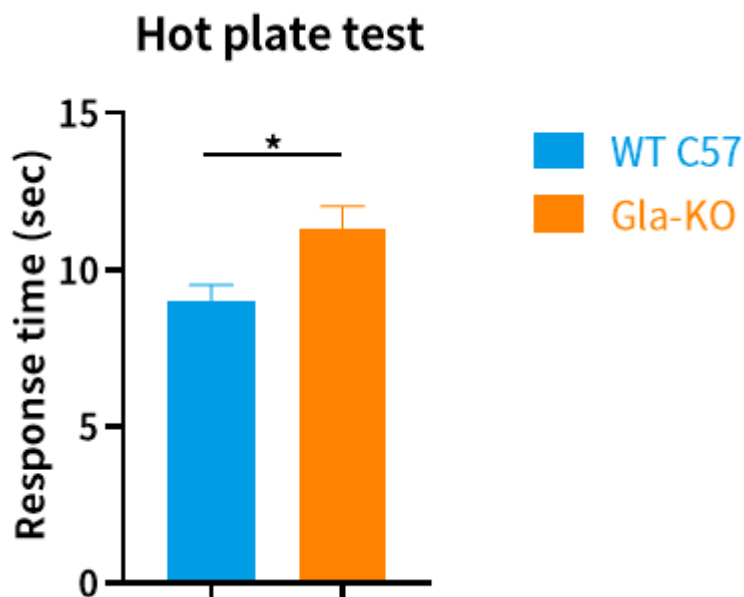


Fig3. Hot plate test of 14 weeks old male Gla-KO mice. (Data from the collaborator)

---