

# hKITLG(NMG)

系統名	NOD- <i>Prkdc</i> <sup>scid</sup> / <i>Il2rg</i> <sup>em1</sup> <i>Kitl</i> <sup>em1(hKITLG)/Smoc</sup>
SMOC番号	NM-HU-2000039
維持形態	Developing

## 遺伝子の概要

Gene Symbol Kitl	Synonyms	Gb, SF, Sl, Clo, Con, Mgf, SCF, SLF, blz, Kitlg, contrasted
	NCBI ID	<a href="#">17311</a>
	MGI ID	<a href="#">96974</a>
	Ensembl ID	<a href="#">ENSMUSG00000019966</a>
	Human Ortholog	KITLG

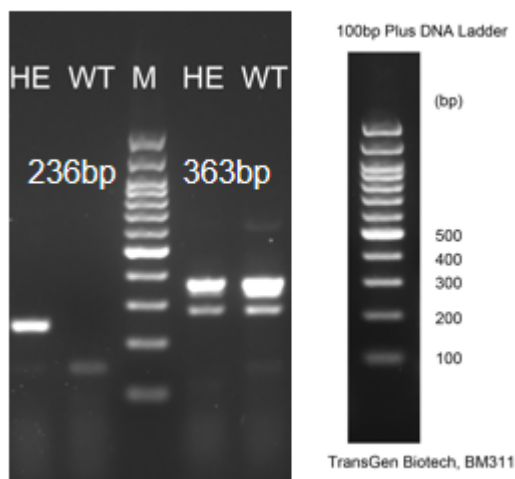
## 説明

The endogenous mouse *Kitl* gene was replaced by human KITLG gene.

**応用分野:** Immunotherapy, drug screening

\*Literature published using this strain should indicate: hKITLG(NMG) mice (Cat. NO. NM-HU-2000039) were purchased from Shanghai Model Organisms Center, Inc..

## 表現型データ



**Fig1. Detection of KITLG expression in lung by RT-PCR.** Wild type: only one band at 363 bp with primers F1/R1(mKitlg); Heterozygous: one band at 363 bp with primers F1/R1(mKitlg) and one band at 236 bp with primers F2/R2(hKITLG); Abbr.. M, DNA marker; HO, homozygous; HE, heterozygous; WT, wild type.