

R26-CreERT2

系統名	C57BL/6Smoc- <i>Gt(ROSA)26Sor</i> ^{em1(SA-FRT-2xpolyA-CAG-FRT-CreERT2-Rox-WPRE-Rox-polyA)Smoc}
SMOC番号	NM-KI-200041
維持形態	Repository Live

遺伝子の概要

Gene Symbol Gt(ROSA)26Sor	Synonyms	R26, ROSA26, AV258896, Gtrg eo26, Gtrosa26, Thumpd3as1
	NCBI ID	14910
	MGI ID	104735
	Ensembl ID	ENSMUSG00000086429

説明

These mice harbor a SA-FRT-2xpolyA-CAG-FRT-CreERT2-Rox-WPRE-Rox-polyA cassette in the Rosa26 locus generated by homologous recombination. When crossed with a strain carrying a gene flanked by loxP sites, the flanked gene will be removed in multiple tissues after tamoxifen treatment.

応用分野: Cre recombinase tool

*Literature published using this strain should indicate: R26-CreERT2 mice (Cat. NO. NM-KI-200041) were purchased from Shanghai Model Organisms Center, Inc..

表現型データ

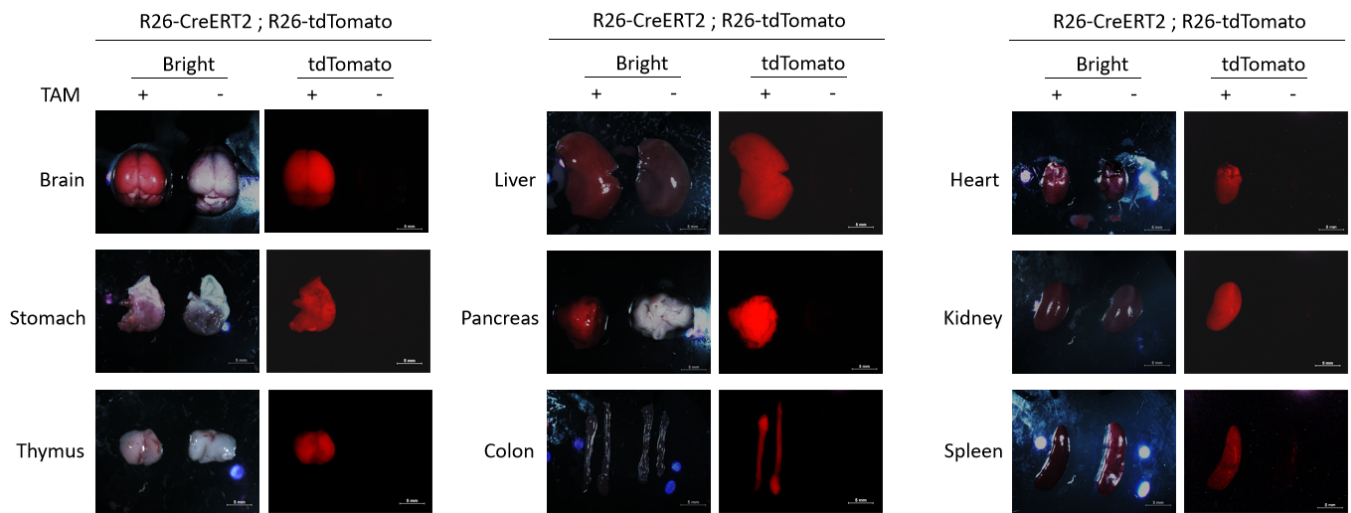


Fig1. Detection of tdTomato(red) in various tissues of R26CreERT2/+; Rosa26tdTomato/+ mice by fluorescence assay. Expression tissues include: brain, liver, stomach, thymus, pancreas, colon, heart, kidney and spleen. (For more detailed information please contact our technical advisor.)

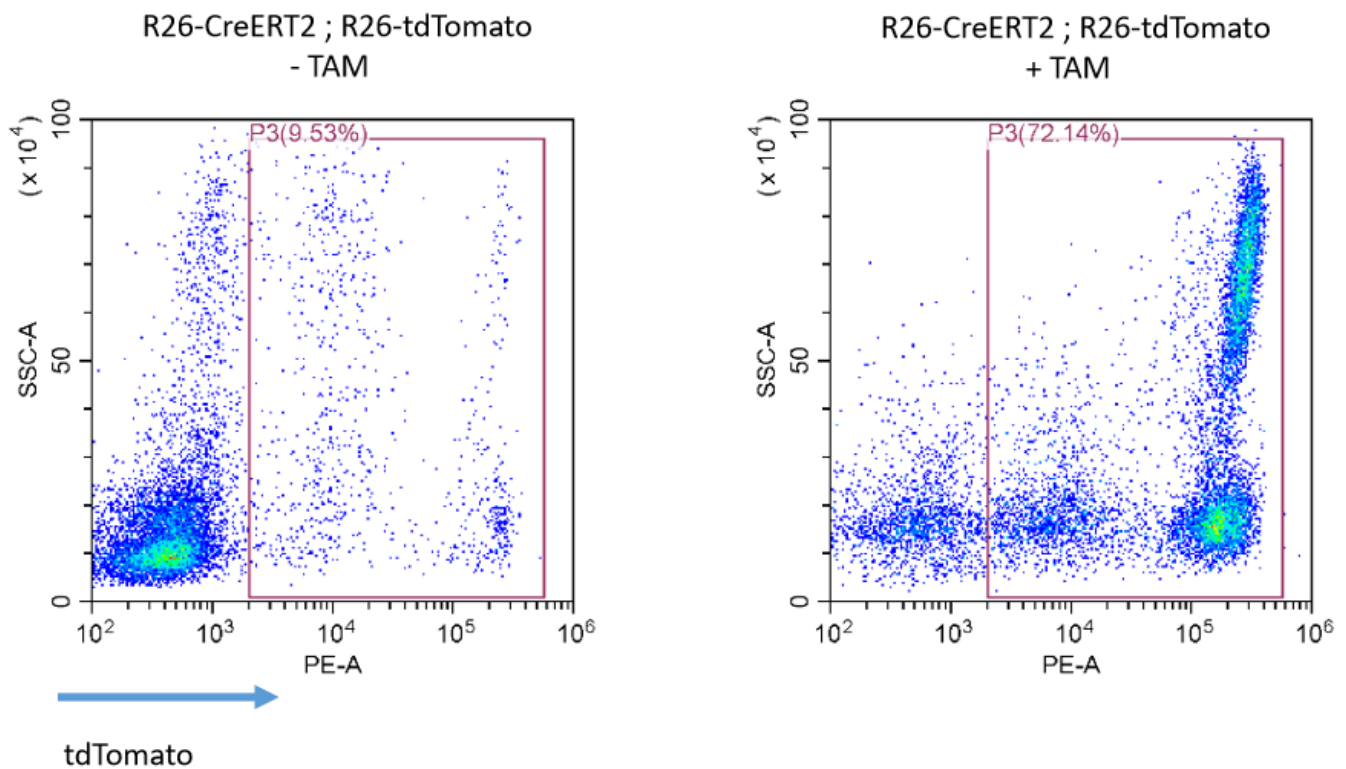


Fig2. CreERT2-mediated recombination in peripheral blood of R26CreERT2/+; Rosa26tdTomato/+ mice.