

Aqp5-Cre

| | |
|--------|--|
| 系統名 | C57BL/6Smoc- <i>Aqp5</i> ^{em1(iCre-WPRE-polyA)Smoc} |
| SMOC番号 | NM-KI-200062 |
| 維持形態 | Repository Live |

遺伝子の概要

| | | |
|---------------------|----------------|------------------------------------|
| Gene Symbol Aqp5 | Synonyms | - |
| | NCBI ID | 11830 |
| | MGI ID | 106215 |
| | Ensembl ID | ENSMUSG00000044217 |
| | Human Ortholog | AQP5 |

説明

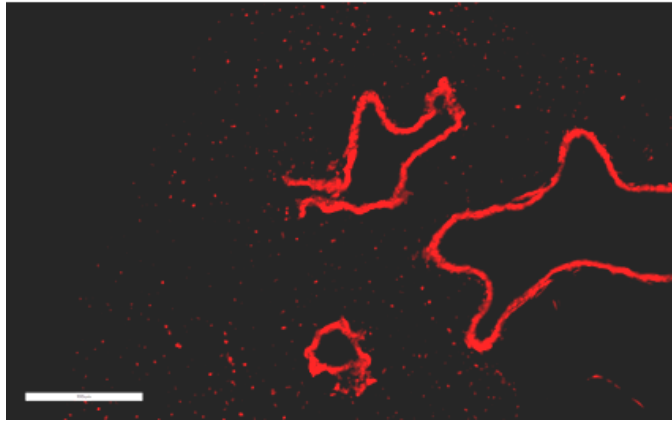
A iCre-WPRE-polyA expression cassette was knocked into the Aqp5 gene start codon site.

応用分野: Cre recombinase tool; Aquaporin 5 (AQP5) belongs to a family of water channel proteins that allow water to pass through the plasma membrane by osmosis. AQP5 is expressed in salivary gland and lung epithelial cells. When crossed with a reporter mice, reporter gene expression can be detected in Aqp5 positive cells. When crossed with a strain carrying a gene flanked by loxP sites, the flanked gene will be removed in cells expressing cre.

*Literature published using this strain should indicate: Aqp5-Cre mice (Cat. NO. NM-KI-200062) were purchased from Shanghai Model Organisms Center, Inc..

表現型データ

tdTomato



Merge

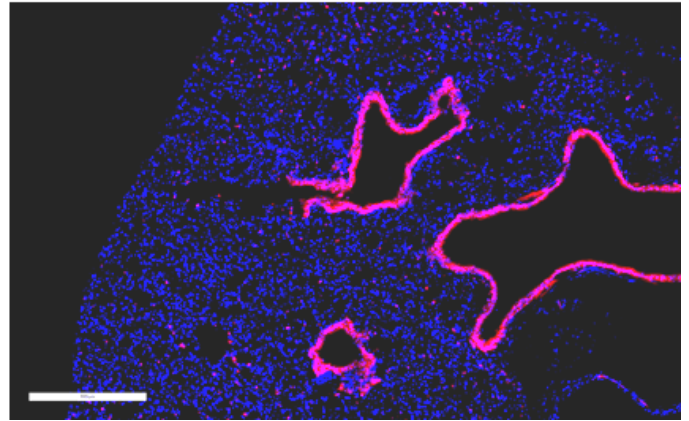


Fig. 1 Cre-mediated recombination in the lung of $Aqp5^{Cre/+}; Rosa26^{tdTomato/+}$ mouse. TdTomato (red) expression can be detected in the lung epithelial cells derived from $Aqp5^{Cre/+}; Rosa26^{tdTomato/+}$ mouse.

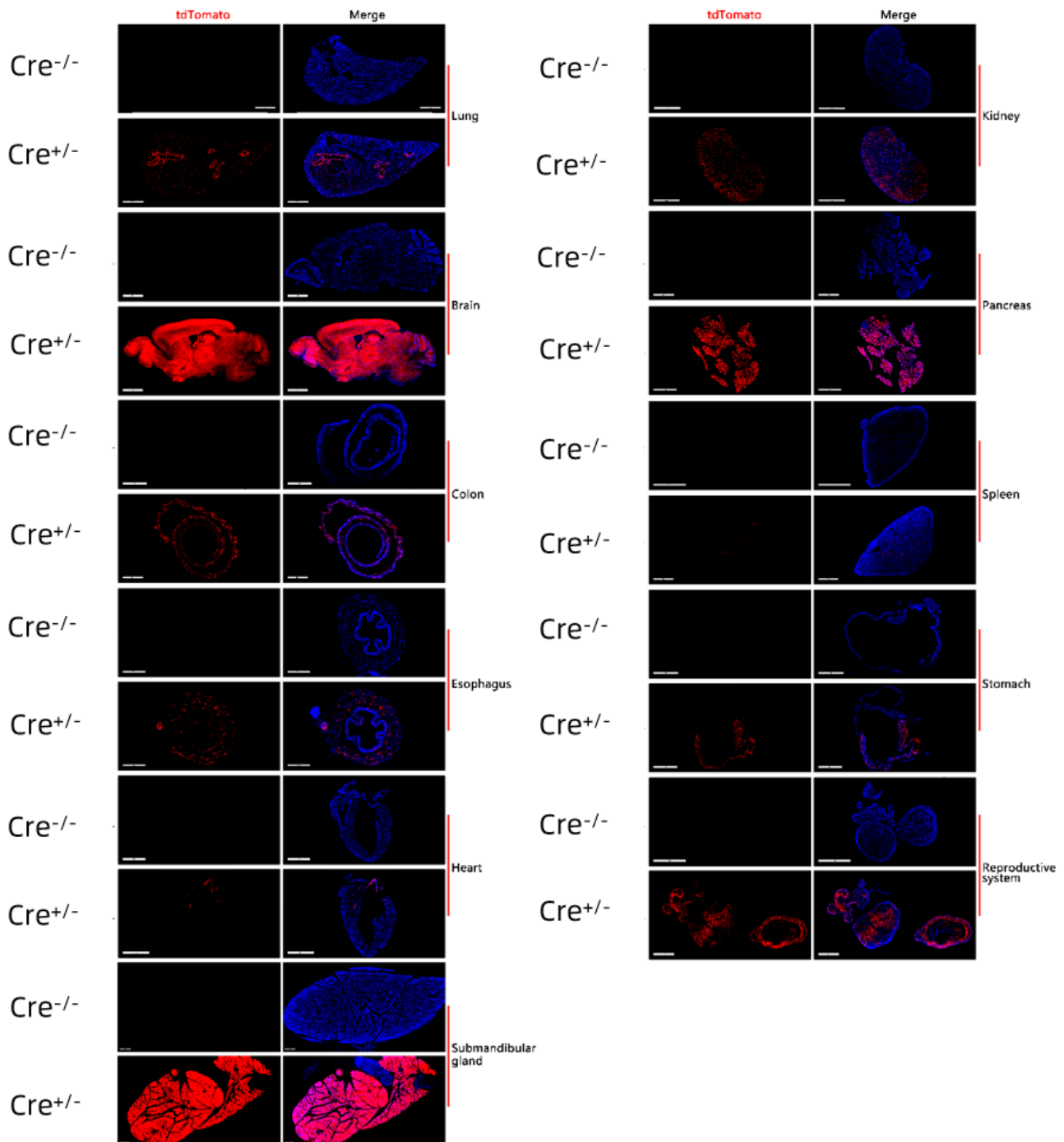


Fig. 2 Detection of tdTomato(red) in various tissues of $Aqp5^{Cre/+}; Rosa26^{tdTomato/+}$ mice. Cre mediated recombination can be detected in lung epithelial cells, salivary gland, pancreas, brain, stomach, large intestine and esophagus. TdTomato can also be detected in individual cells of the heart, kidney, spleen, ovary and uterus. (For more detailed information please contact our technical advisor.)