

Wap-IRES-Cre

系統名	C57BL/6Smoc- <i>Wap</i> ^{em1(IRES-Cre-WPRE-polyA)Smoc}
SMOC番号	NM-KI-200064
維持形態	Repository Live

遺伝子の概要

Gene Symbol Wap	Synonyms	-
	NCBI ID	22373
	MGI ID	98943
	Ensembl ID	ENSMUSG00000000381
	Human Ortholog	WAP

説明

A IRES-Cre-WPRE-polyA expression cassette was knocked into the Wap gene stop codon site.

応用分野: These mice express cre recombinase from the Wap locus. By mating the reporter mice with Cre-expressing mice, reporter gene expression can be detected in the mammary gland epithelial cells of the lactating mouse. This strain may be useful for in the research of breast carcinoma.

*Literature published using this strain should indicate: Wap-IRES-Cre mice (Cat. NO. NM-KI-200064) were purchased from Shanghai Model Organisms Center, Inc..

表現型データ

tdTomato

Merge

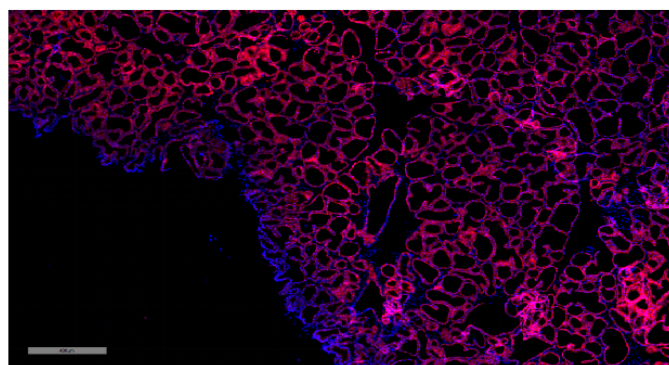
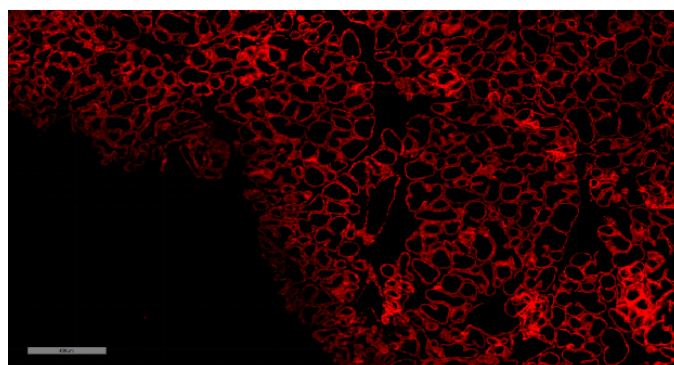


Fig.1 Cre-mediated recombination in the mammary gland of female $Wap^{Cre/+}; Rosa26^{tdTomato/+}$ mouse. TdTomato(red) expression can be detected in the mammary gland epithelial cells of the lactating $Wap^{Cre/+}; Rosa26^{tdTomato/+}$ mouse.

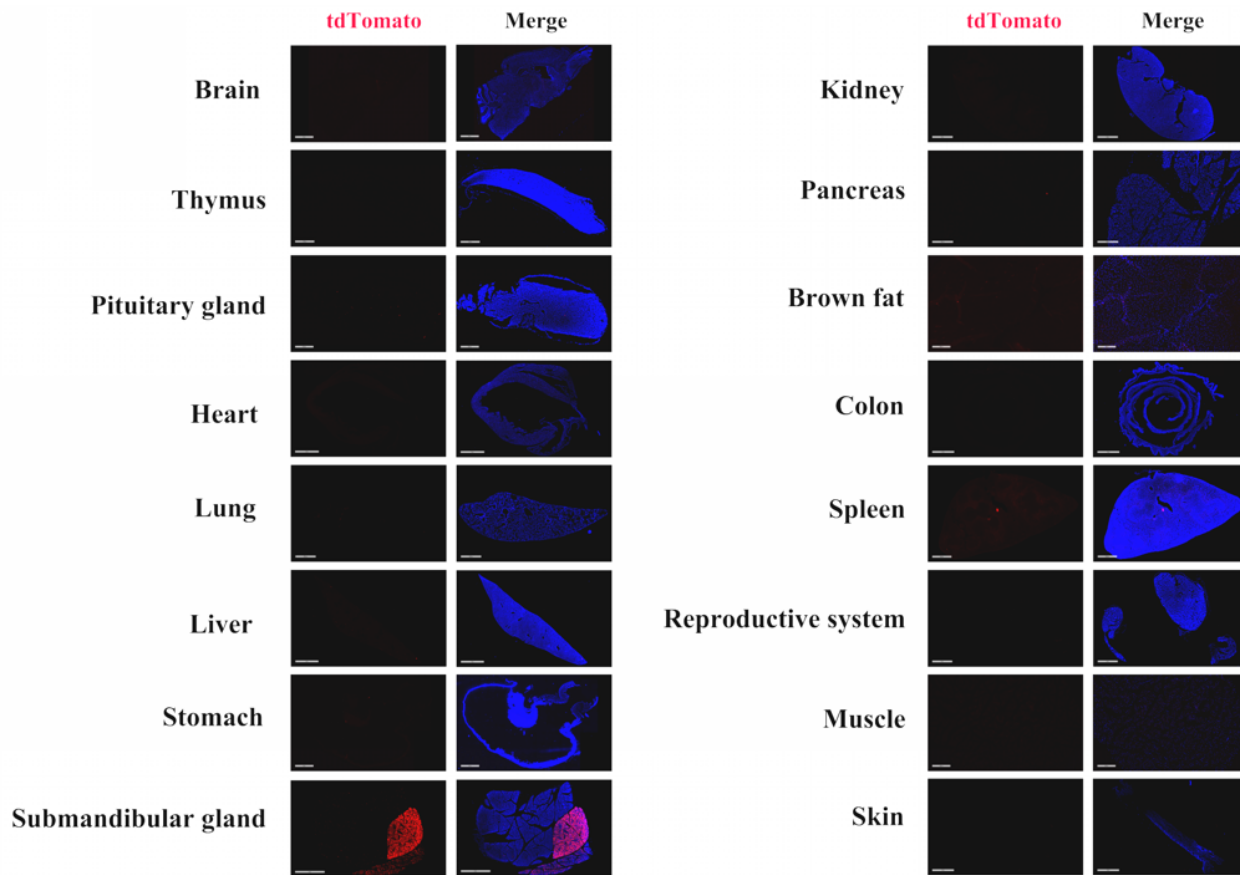


Fig.2 Detection of tdTomato(red) in various tissues of $Wap^{Cre/+}; Rosa26^{tdTomato/+}$ mice. Cre mediated recombination can be detected in the some cells of salivary glands and mammary glands of the lactating mouse. Tdtomato can not be detected in the brain, thymus, pituitary gland, heart, lung, liver, stomach, kidney, brown fats, colon, pancreas, muscle, testis and epididymis. (For more detailed information please contact our technical advisor.)