

# Gad2-IRES-Cre

系統名	C57BL/6Smoc- <i>Gad2</i> <sup>em1(IRES-iCre-pA)Smoc</sup>
SMOC番号	NM-KI-200078
維持形態	Repository Live

## 遺伝子の概要

Gene Symbol Gad2	Synonyms	GAD65; Gad-2; GAD(65); 6330404F12Rik
	NCBI ID	<a href="#">14417</a>
	MGI ID	<a href="#">95634</a>
	Ensembl ID	<a href="#">ENSMUSG00000026787</a>
	Human Ortholog	GAD2

## 説明

A IRES-iCre-pA expression cassette was knocked into the *Gad2* gene stop codon site.

**応用分野:** By mating the reporter mice with Cre-expressing mice, *Gad2* positive cells derived from double-positive mice were permanently labeled by fluorescent protein. It can be used to trace *Gad2*-positive cells.

\*Literature published using this strain should indicate: *Gad2*-IRES-Cre mice (Cat. NO. NM-KI-200078) were purchased from Shanghai Model Organisms Center, Inc..

## 表現型データ

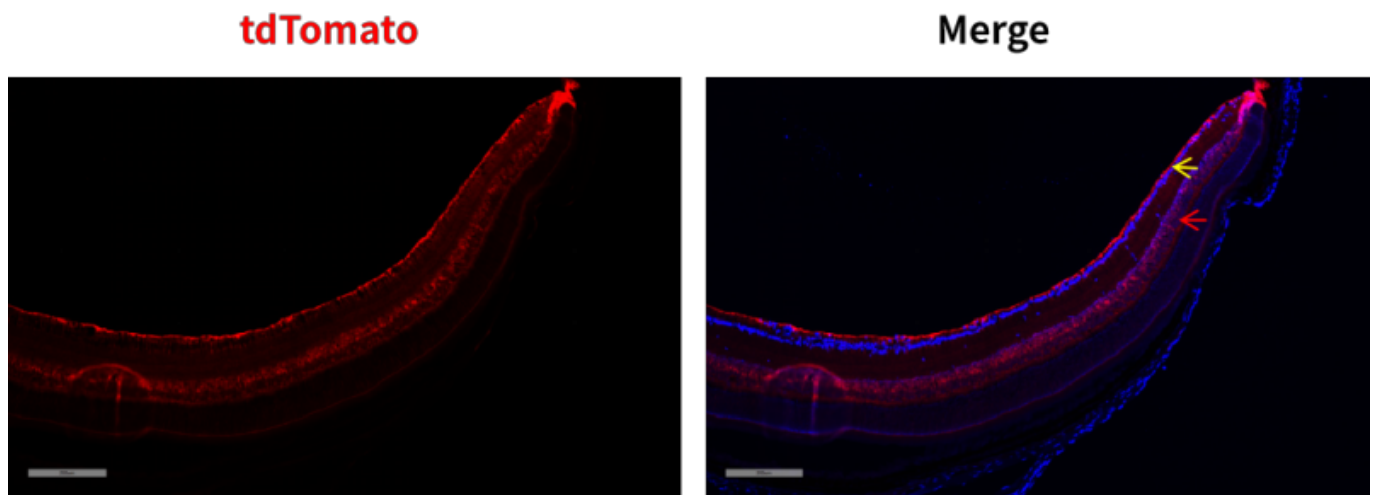


Fig. 1 Detection of tdTomato (red) in the retina of  $Gad2^{icre/+}; Rosa26^{tdTomato/+}$  mice. Cre-mediated recombination in the retinal ganglion cell layer (yellow arrow) and inner nuclear layer (red arrow) of  $Gad2^{icre/+}; Rosa26^{tdTomato/+}$  mouse.

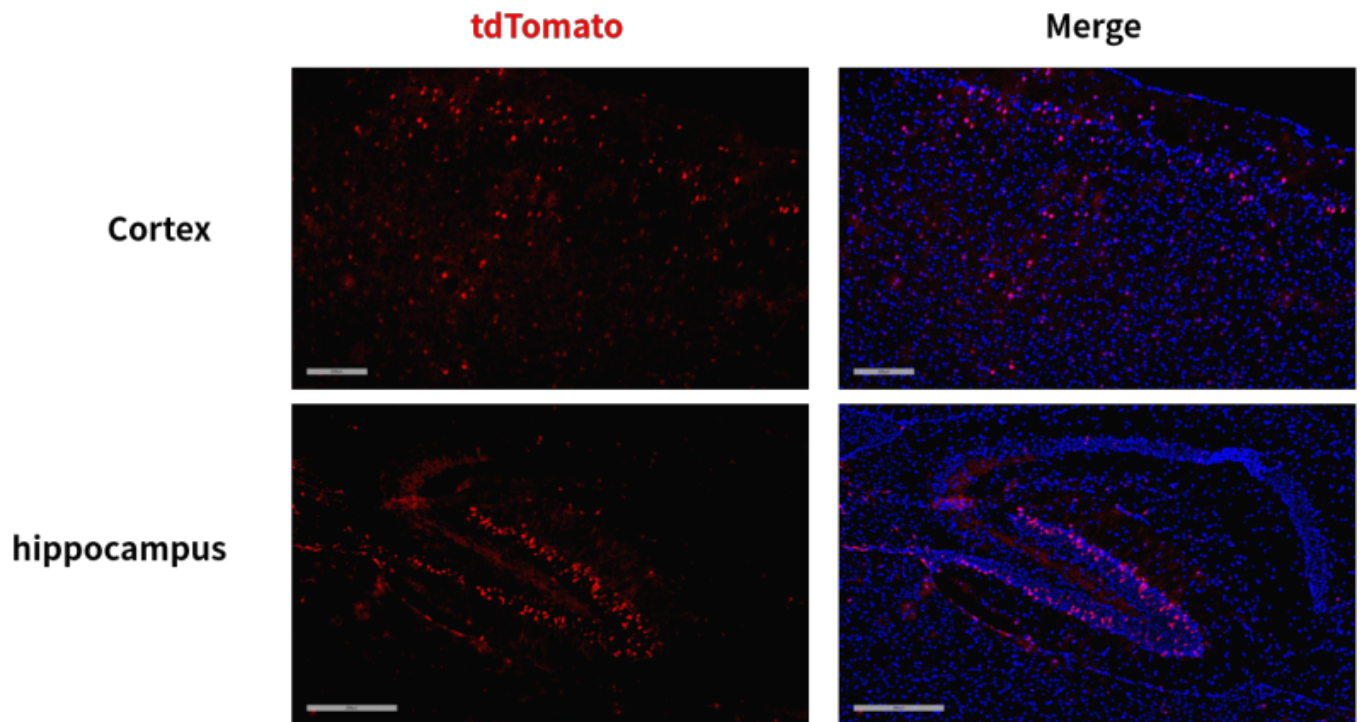


Fig. 2 Detection of tdTomato (red) in some cells of the cortex and hippocampus driven from  $Gad2^{icre/+}; Rosa26^{tdTomato/+}$  mice.

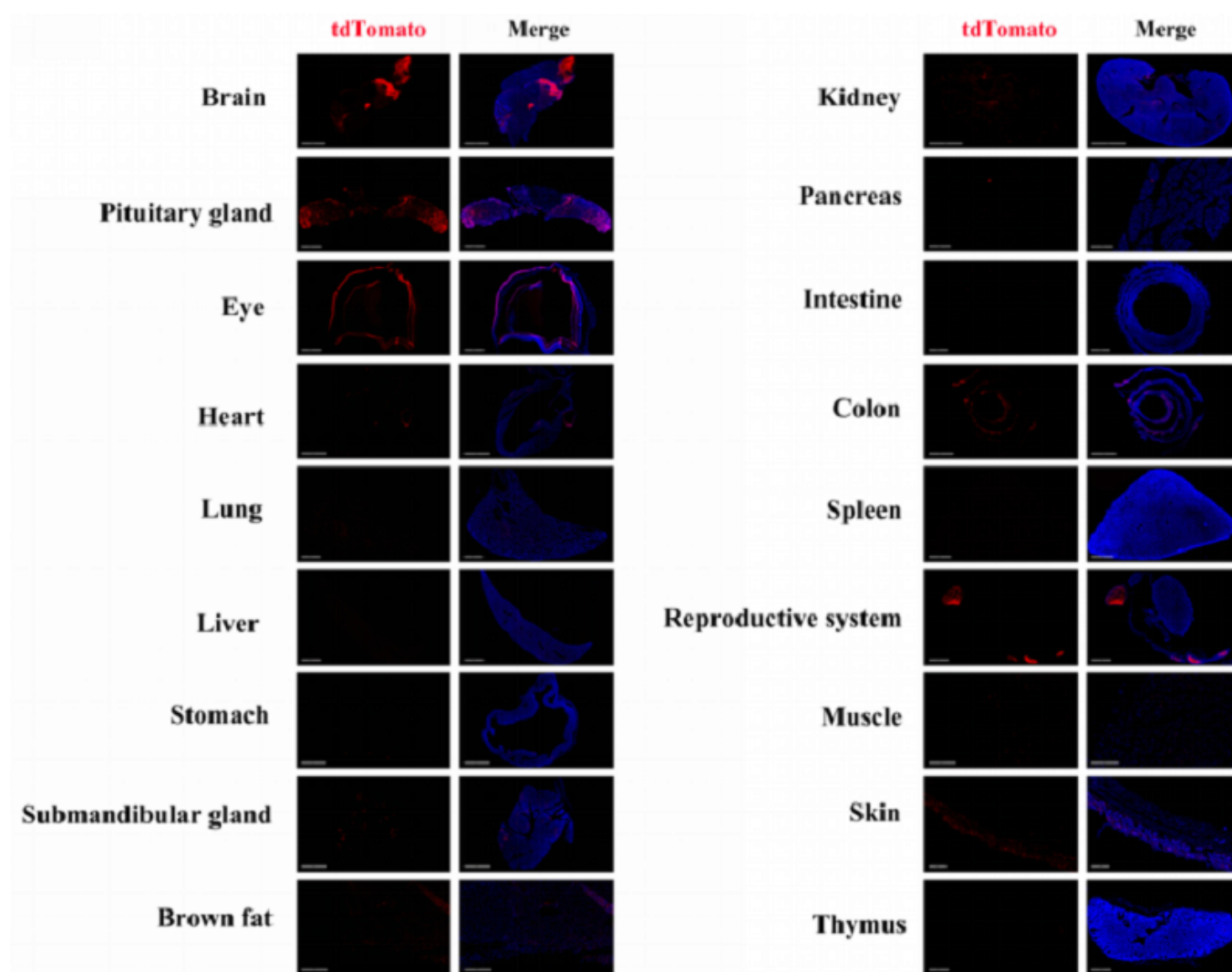


Fig. 3 Detection of tdTomato (red) in various tissues of  $Gad2^{icre/+}; Rosa26^{tdTomato/+}$  mice. Cre-mediated recombination in some cells of the brain, pituitary gland, retina, lung, heart, liver, submandibular gland, brown fat, kidney, pancreas, intestine, colon, epididymis, muscle, skin and thymus can be observed. Tdtomato can not be detected in the spleen and testis. (For more detailed information please contact our technical advisor.)