

# Sox2-CreERT2

系統名	C57BL/6Smoc- <i>Sox2</i> <sup>em1(CreERT2-polyA)Smoc</sup>
SMOC番号	NM-KI-200084
維持形態	Repository Live

## 遺伝子の概要

Gene Symbol Sox2	Synonyms	lcc; ysb; Sox-2
	NCBI ID	<a href="#">20674</a>
	MGI ID	<a href="#">98364</a>
	Ensembl ID	<a href="#">ENSMUSG00000074637</a>
	Human Ortholog	SOX2

## 説明

The coding region of Sox2 gene was replaced by a CreERT2-polyA expression cassette.

**応用分野:** Cre recombinase tool, blastocysts, neural progenitor cells and in many adult epithelial tissues

\*Literature published using this strain should indicate: Sox2-CreERT2 mice (Cat. NO. NM-KI-200084) were purchased from Shanghai Model Organisms Center, Inc..

## 表現型データ

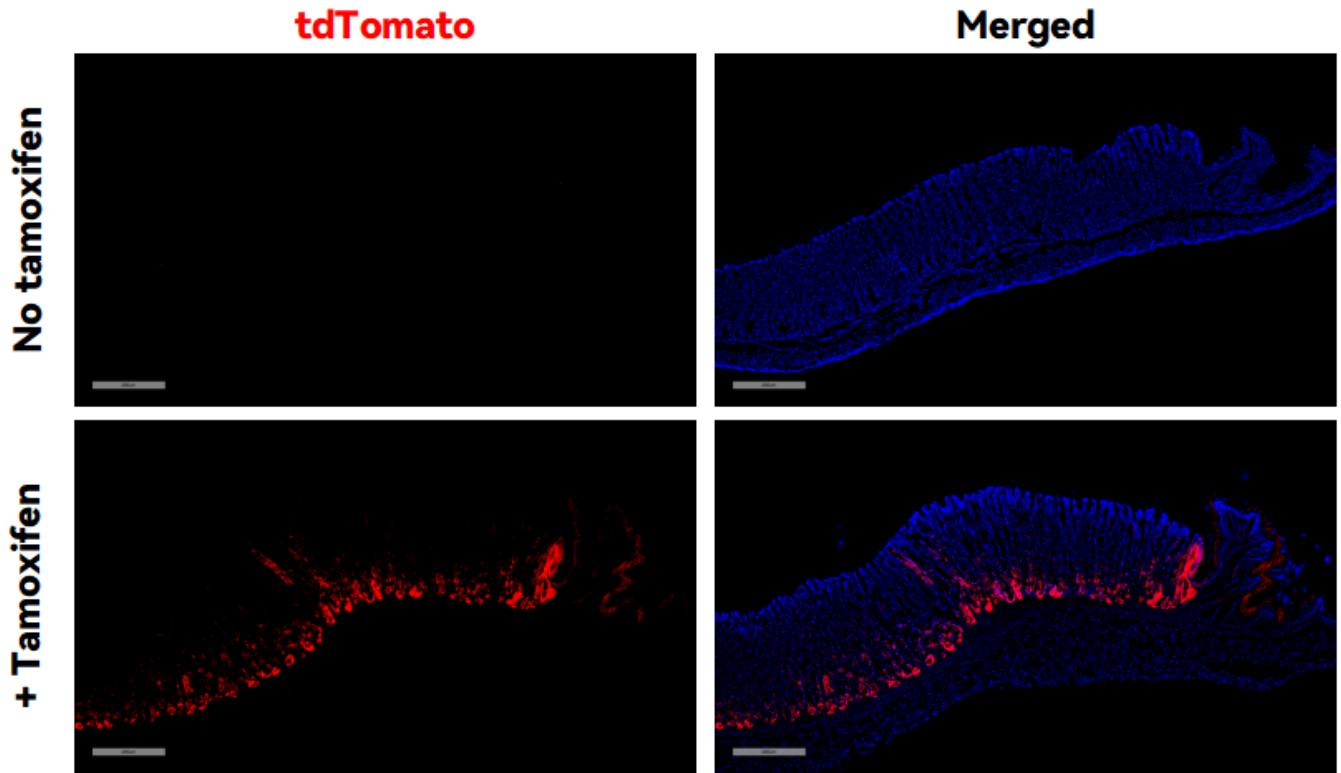


Fig1. CreERT2-mediated recombination in Stomach of Sox2CreERT2/+;Rosa26 tdTomato/+ mouse.

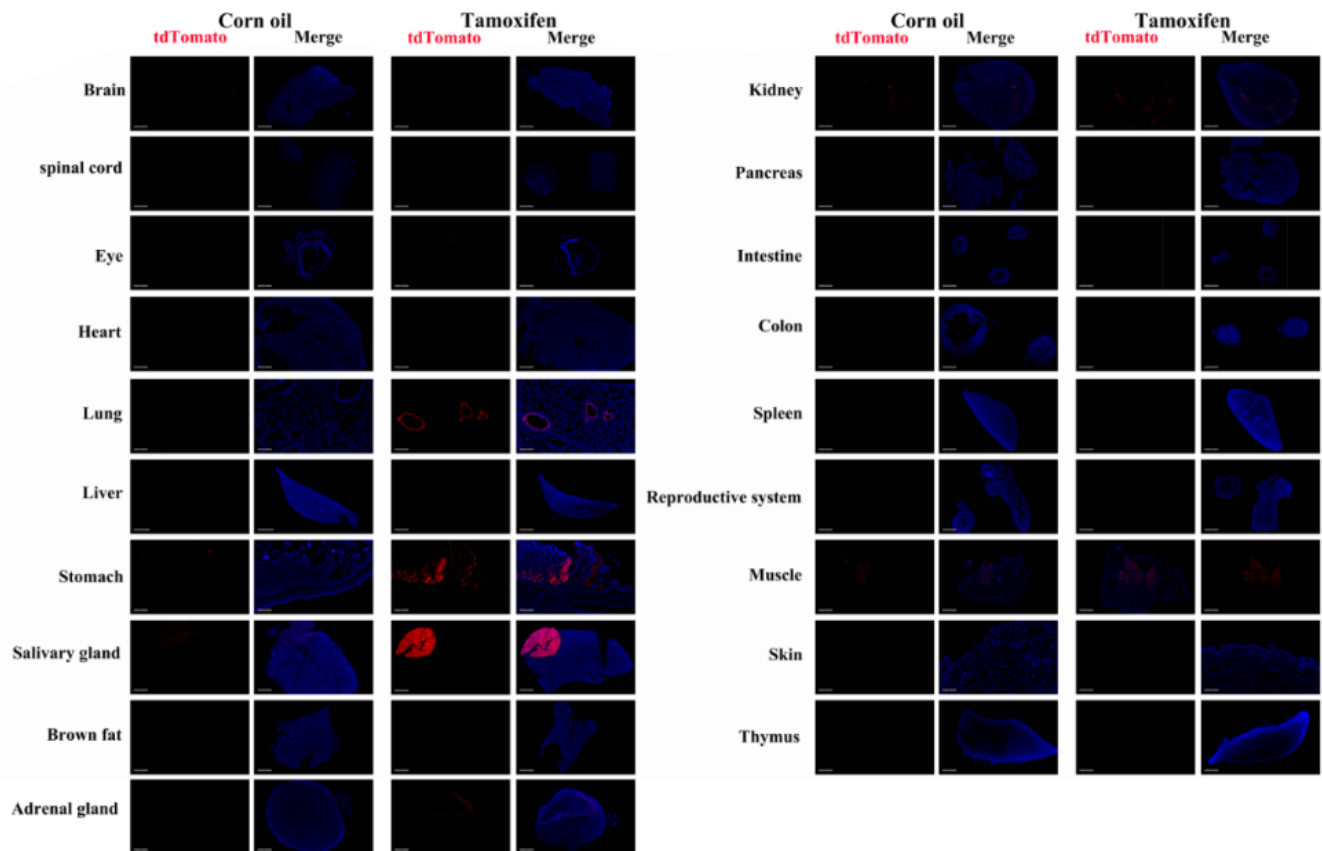


Fig2. Detection of tdTomato(red) in various tissues of Sox2CreERT2/+;Rosa26 tdTomato/+ mice. (For

more detailed information please contact our technical advisor.)

---