

Bmi1-IRES-CreERT2

| | |
|--------|---|
| 系統名 | C57BL/6Smoc- <i>Bmi1</i> ^{em1(IRES-CreERT2)Smoc} |
| SMOC番号 | NM-KI-200095 |
| 維持形態 | Sperm cryopreservation |

遺伝子の概要

| | | |
|---------------------|-----------------------|------------------------------------|
| Gene Symbol Bmi1 | Synonyms | Bmi-1; Pcgf4; AW546694 |
| | NCBI ID | 12151 |
| | MGI ID | 88174 |
| | Ensembl ID | ENSMUSG00000026739 |
| | Human Ortholog | BMI1 |

説明

A IRES-CreERT2 expression cassette was knocked into the Bmi1 gene stop codon site.

応用分野: Cre recombinase tool

*Literature published using this strain should indicate: Bmi1-IRES-CreERT2 mice (Cat. NO. NM-KI-200095) were purchased from Shanghai Model Organisms Center, Inc..

表現型データ

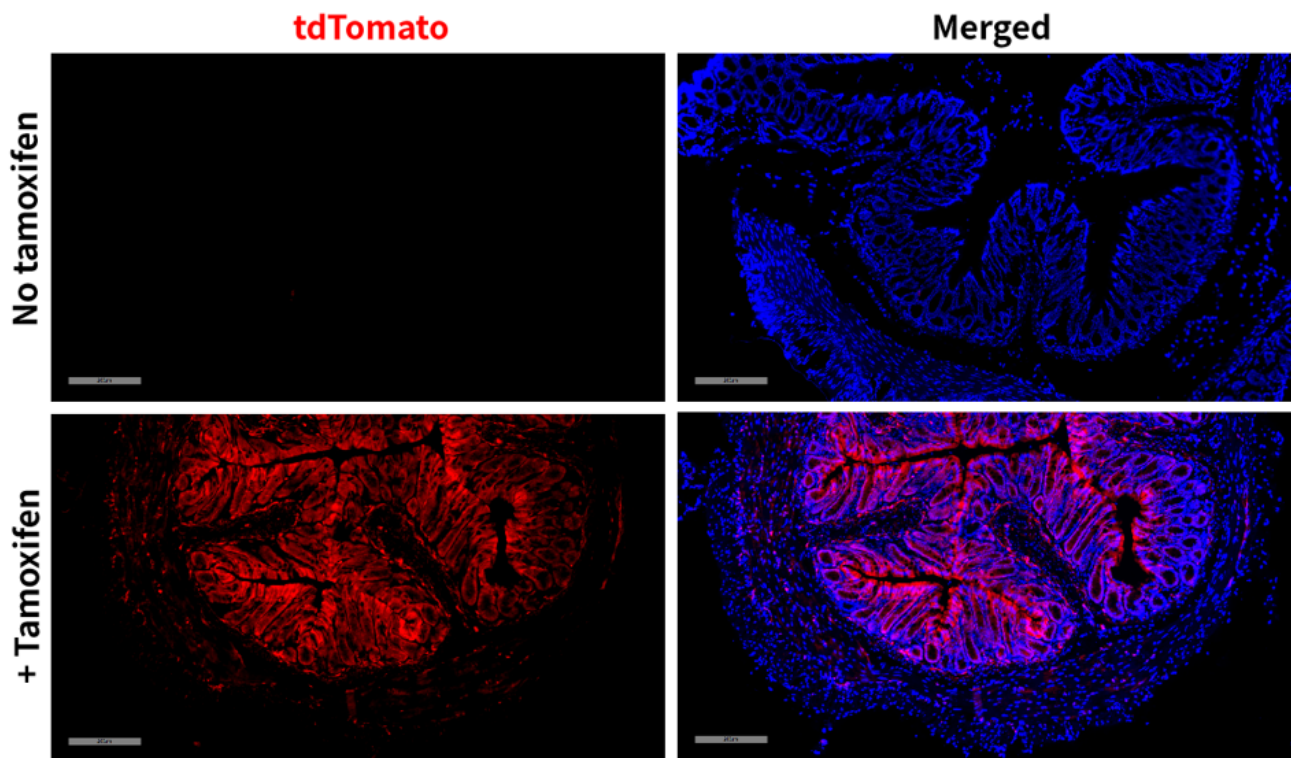


Fig 1. Cre-mediated recombination in Colon of $Bmi1^{Cre/+}; Rosa26^{tdTomato/+}$ mice .

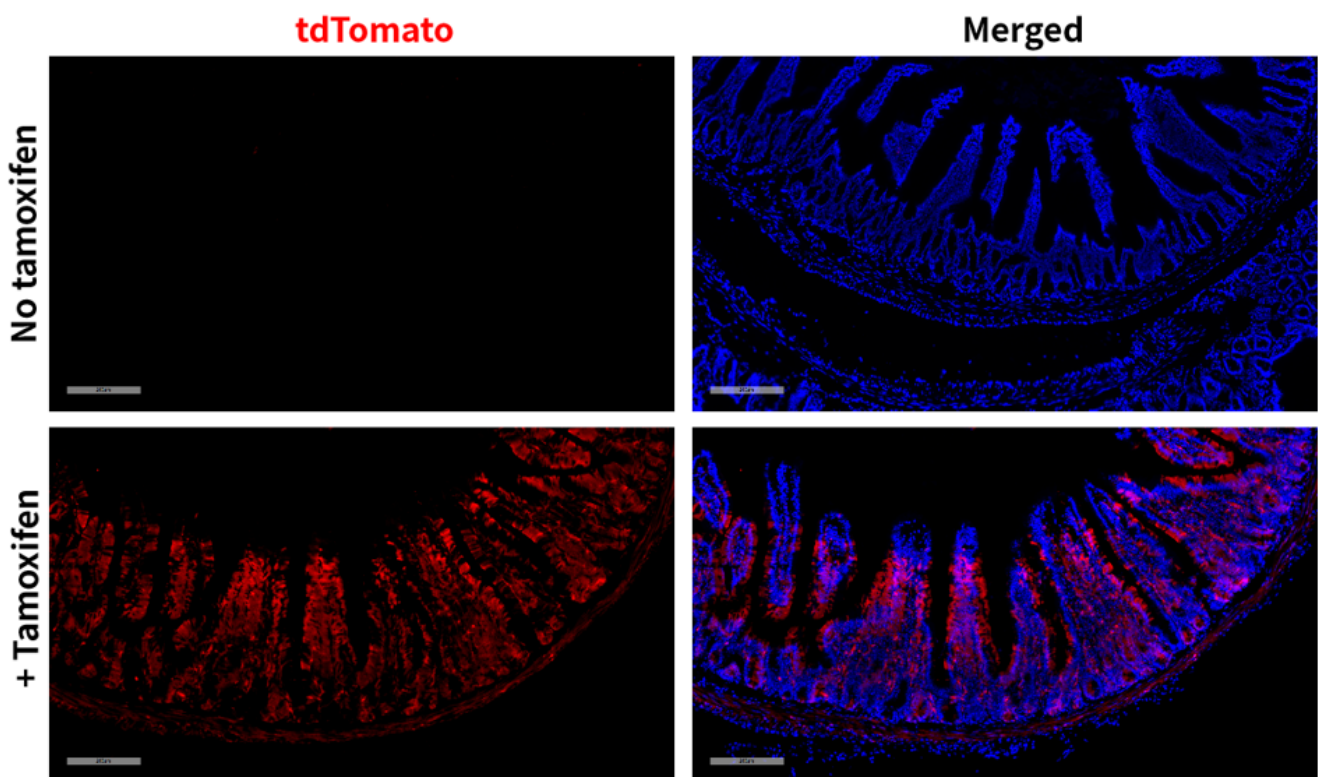


Fig 2. Cre-mediated recombination in intestine of $Bmi1^{Cre/+}; Rosa26^{tdTomato/+}$ mice .

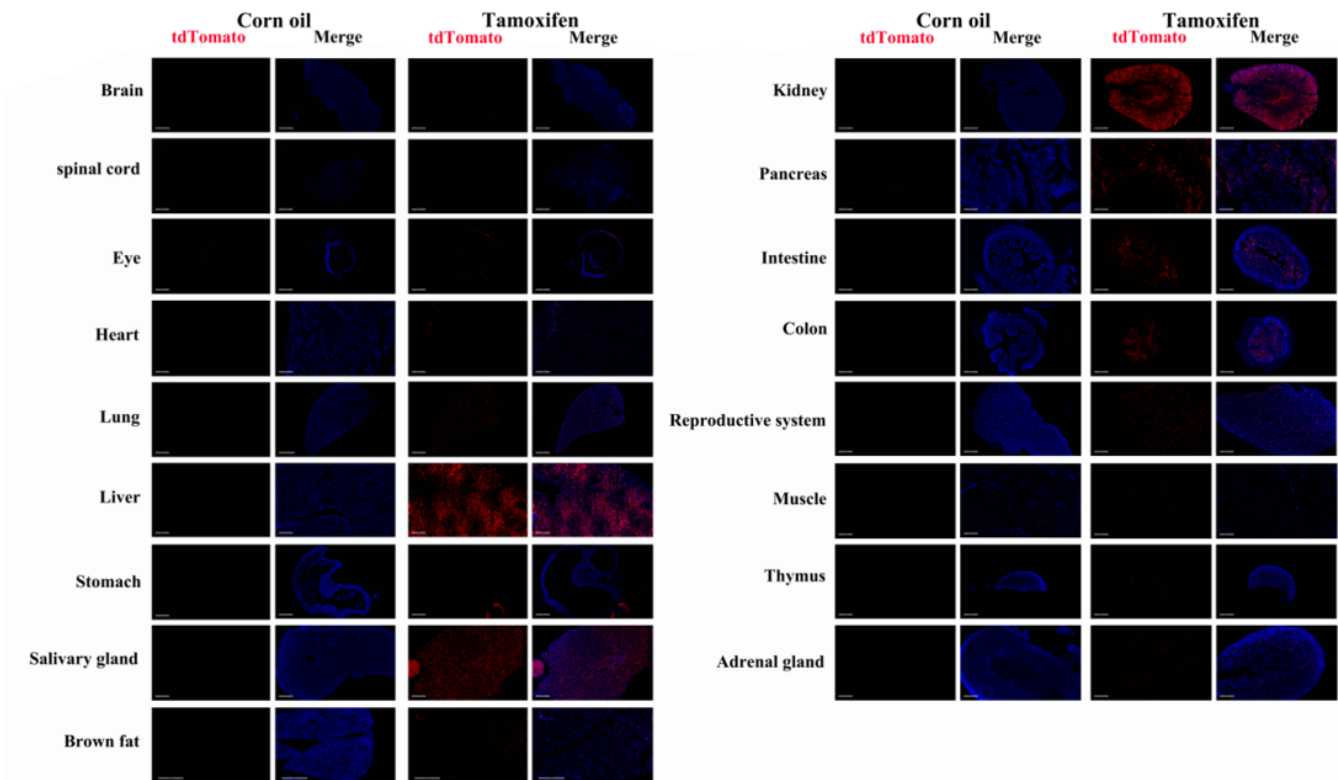


Fig 3. Detection of tdTomato(red) in various tissues of $Bmi1^{Cre/+};Rosa26^{tdTomato/+}$ mice. Expression tissues include: choroid plexus, cornea, heart, lung, liver, stomach, salivary glands, brown fat, kidney, pancreas, small and large intestine, testis, thymus, adrenal gland. A few cells expressed in brain, spinal cord, muscle. (For more detailed information please contact our technical advisor.)