

# Calb2-IRES-Cre

系統名	C57BL/6Smoc- <i>Calb2</i> <sup>em1(IRES-iCre-SV40-pA)Smoc</sup>
SMOC番号	NM-KI-200102
維持形態	Repository Live

## 遺伝子の概要

Gene Symbol Calb2	Synonyms	CR
	NCBI ID	<a href="#">12308</a>
	MGI ID	<a href="#">101914</a>
	Ensembl ID	<a href="#">ENSMUSG00000003657</a>
	Human Ortholog	CALB2

## 説明

A IRES-iCre expression cassette was knocked into the *Calb2* gene stop codon site. *Calb2* gene encodes calbindin 2. When crossed with a strain carrying a gene flanked by loxP sites, the flanked gene will be removed in cells expressing cre. The protein plays a key role in the nervous system.

**応用分野:** Cre recombinase tool

\*Literature published using this strain should indicate: *Calb2*-IRES-Cre mice (Cat. NO. NM-KI-200102) were purchased from Shanghai Model Organisms Center, Inc..

## 表現型データ

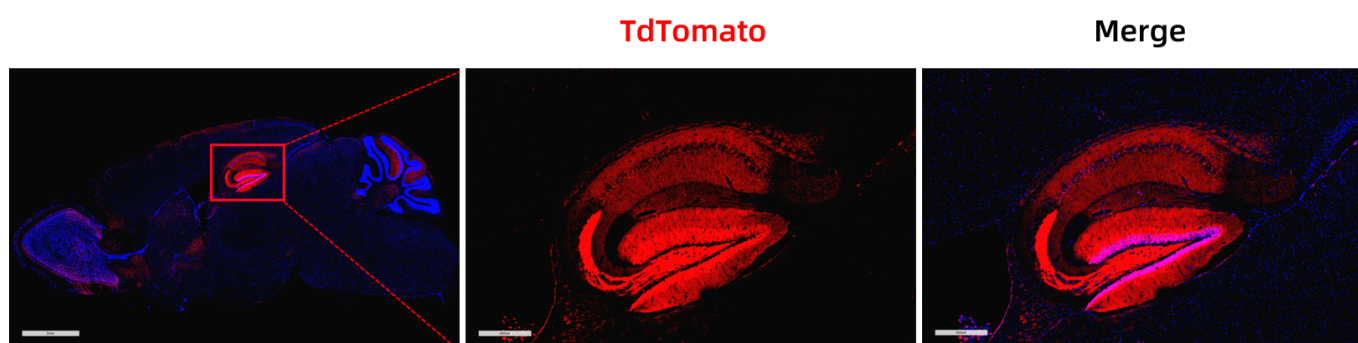


Fig. 1 Cre-mediated recombination in the pituitary gland of *Calb2*<sup>Cre/+</sup>; *Rosa26*<sup>tdTomato/+</sup> mouse. TdTomato(red) expression can be detected in the hippocampus, cortex, olfactory bulb and

cerebellar purkinje cells of Calb2<sup>Cre/+</sup>; Rosa26<sup>tdTomato/+</sup> mouse.

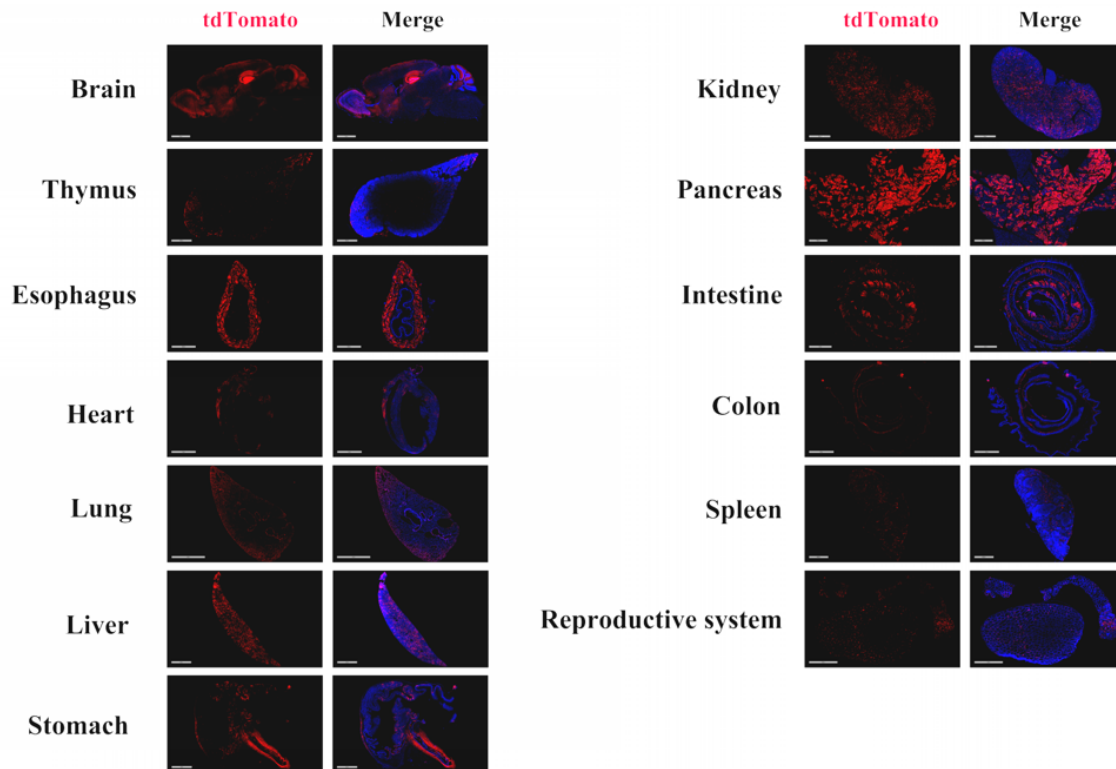


Fig. 2 Detection of tdTomato(red) in various tissues of Calb2<sup>Cre/+</sup>; Rosa26<sup>tdTomato/+</sup> mice. Tdtomato expression can be detected in the brain, heart, lung, liver, stomach, kidney, pancreas, intestine, testis, epididymis, spleen, esophagus, thymus and colon. (For more detailed information please contact our technical advisor.)