

Slc6a4-Cre

系統名	C57BL/6Smoc- <i>Slc6a4</i> ^{em1(iCre-pA)Smoc}
SMOC番号	NM-KI-200115
維持形態	Sperm cryopreservation

遺伝子の概要

Gene Symbol Slc6a4	Synonyms	Htt; Sert; 5-HTT; AI323329
	NCBI ID	15567
	MGI ID	96285
	Ensembl ID	ENSMUSG00000020838
	Human Ortholog	SLC6A4

説明

A iCre-pA expression cassette was knocked into the *Slc6a4* gene start codon site. When crossed with a strain carrying a gene flanked by loxP sites, the flanked gene will be removed in cells expressing Cre. The gene product has been involved in the neurological disorders such as addiction and depression.

応用分野: Cre recombinase tool

*Literature published using this strain should indicate: *Slc6a4*-Cre mice (Cat. NO. NM-KI-200115) were purchased from Shanghai Model Organisms Center, Inc..

表現型データ

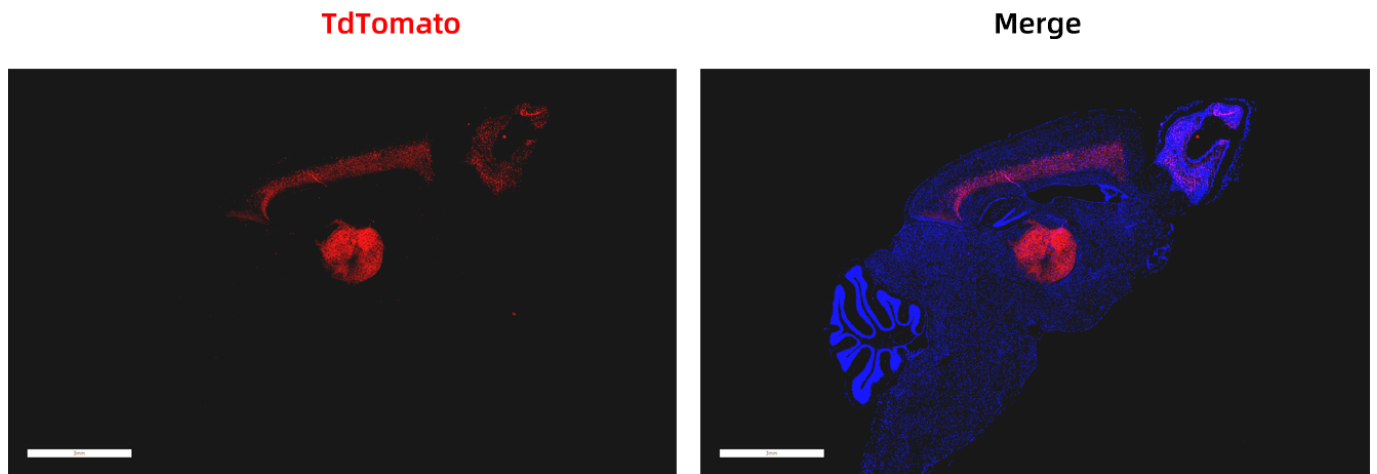


Fig. 1 Cre-mediated recombination in the brain of $Slc6a4^{Cre/+}; Rosa26^{tdTomato/+}$ mouse. TdTomato(red) expression can be detected in the cortex, thalamus and olfactory bulb of $Slc6a4^{Cre/+}; Rosa26^{tdTomato/+}$ mouse.

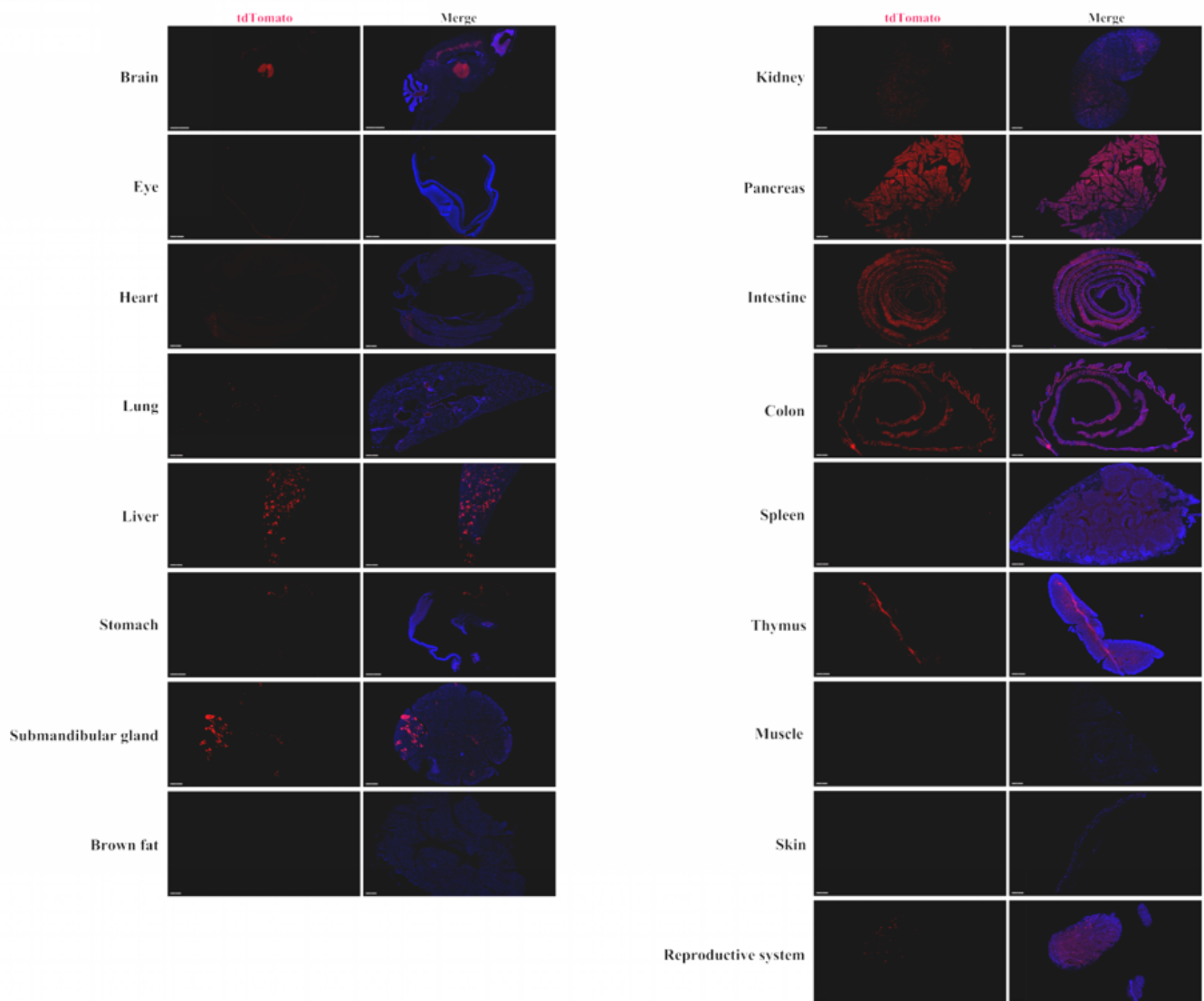


Fig. 2 Detection of tdTomato(red) in various tissues of $Slc6a4^{Cre/+}; Rosa26^{tdTomato/+}$ mice. Tdtomato expression can be detected in the cortex, thalamus, heart, bronchi, liver, stomach, salivary gland,

skin, testis, kidney, thymus, spleen, pancreas, intestine and colon. Tdtomato expression can not be detected in the retina or muscle. (For more detailed information please contact our technical advisor.)
