

# Pax7-IRES-Cre

系統名	C57BL/6Smoc- <i>Pax7</i> <sup>Am1(IRES-iCre)Smoc</sup>
SMOC番号	NM-KI-200120
維持形態	Sperm cryopreservation

## 遺伝子の概要

Gene Symbol Pax7	Synonyms	Pax-7
	NCBI ID	<a href="#">18509</a>
	MGI ID	<a href="#">97491</a>
	Ensembl ID	<a href="#">ENSMUSG00000028736</a>
	Human Ortholog	PAX7

## 説明

A IRES-iCre expression cassette was knocked into the Pax7 gene stop codon site. Pax7 is expressed in myogenic progenitor cells. Pax7 is essential for the myogenic potential, survival, and proliferation of myogenic progenitors. When crossed with a strain carrying a gene flanked by loxP sites, the flanked gene will be removed in cells expressing Pax7.

**応用分野:** Cre recombinase tool

\*Literature published using this strain should indicate: Pax7-IRES-Cre mice (Cat. NO. NM-KI-200120) were purchased from Shanghai Model Organisms Center, Inc..

## 表現型データ

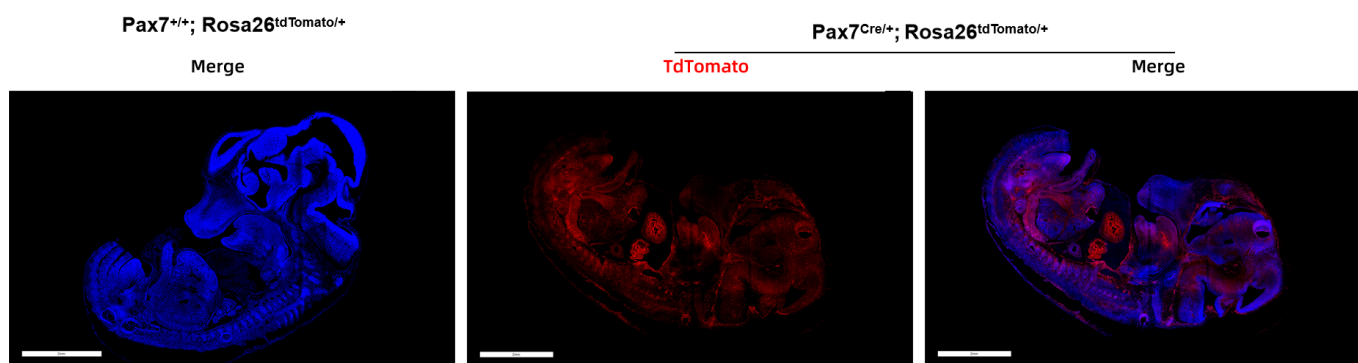


Fig. 1 Cre-mediated recombination in the embryo of Pax7<sup>Cre/+</sup>; Rosa26<sup>tdTomato/+</sup> mouse.

TdTomato(red) expression can be detected in the E12.5 Pax7<sup>Cre/+</sup>; Rosa26<sup>tdTomato/+</sup> mouse embryo.

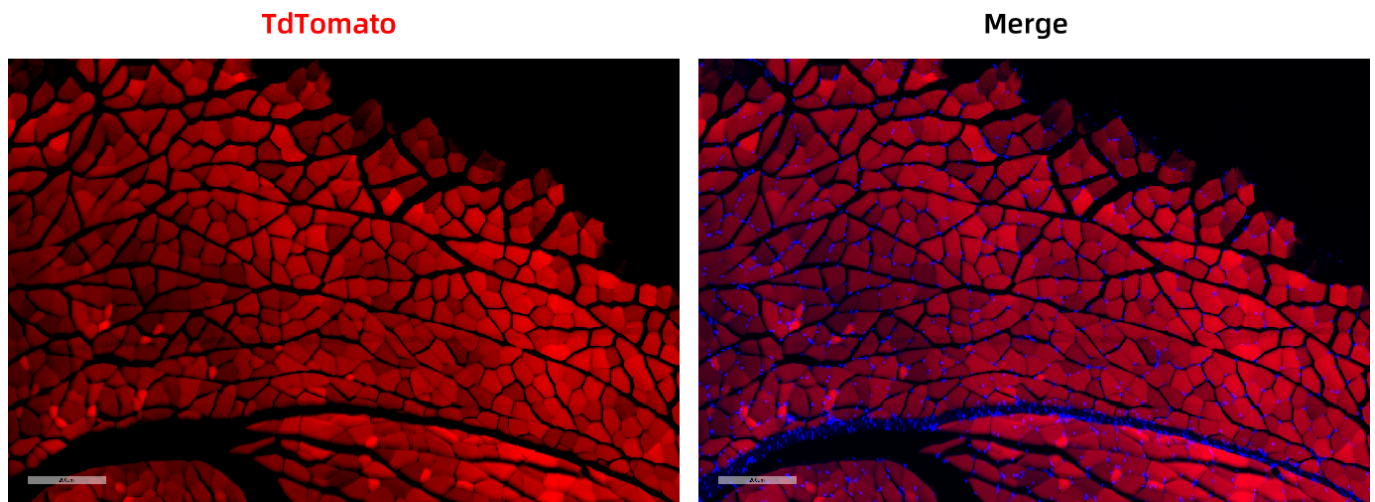


Fig. 2 Cre-mediated recombination in the skeletal muscle of Pax7<sup>Cre/+</sup>; Rosa26<sup>tdTomato/+</sup> mouse. TdTomato(red) expression can be detected in the skeletal muscle cells of Pax7<sup>Cre/+</sup>; Rosa26<sup>tdTomato/+</sup> mouse.

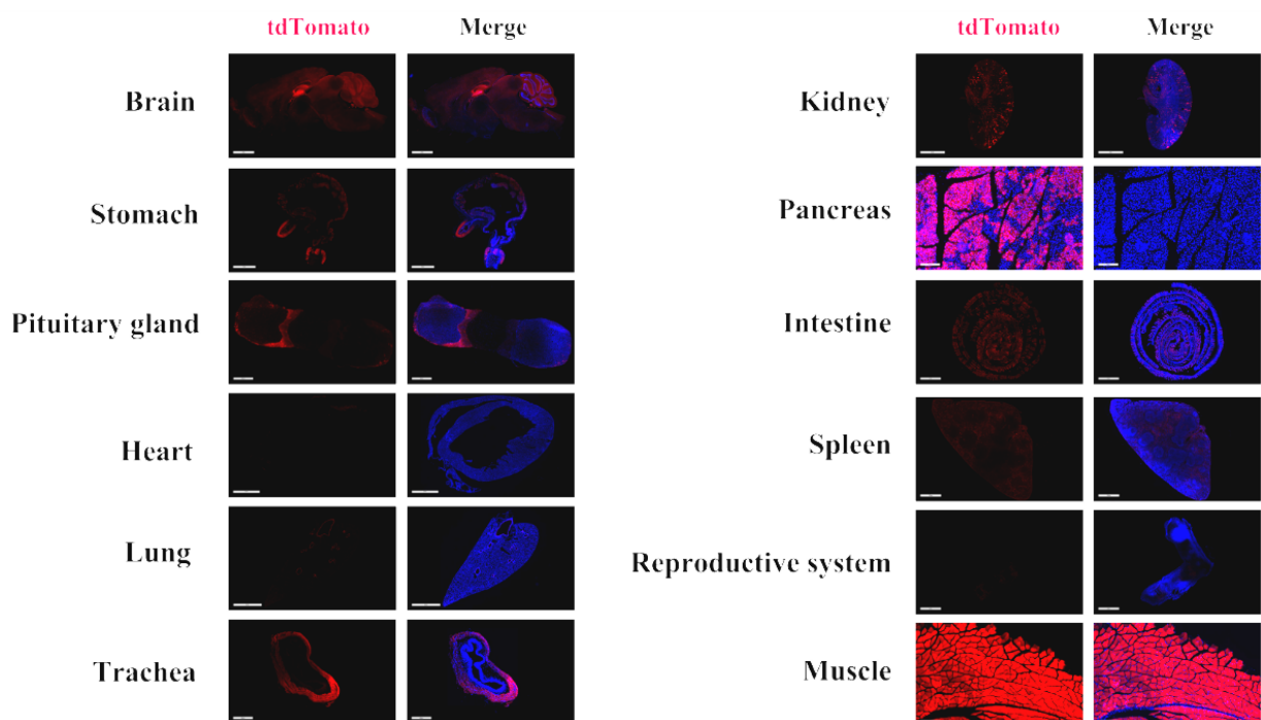


Fig. 3 Detection of tdTomato(red) in various tissues of Pax7<sup>Cre/+</sup>; Rosa26<sup>tdTomato/+</sup> mice. Tdtomato expression can be detected in the hippocampus, cerebellum, gastric mucosa, trachea, bronchi, the muscular layer outside the trachea and intestine. Tdtomato expression can also be detected in individual cells of the pituitary gland, kidney, pancreas, spleen and uterus. (For more detailed information please contact our technical advisor.)

